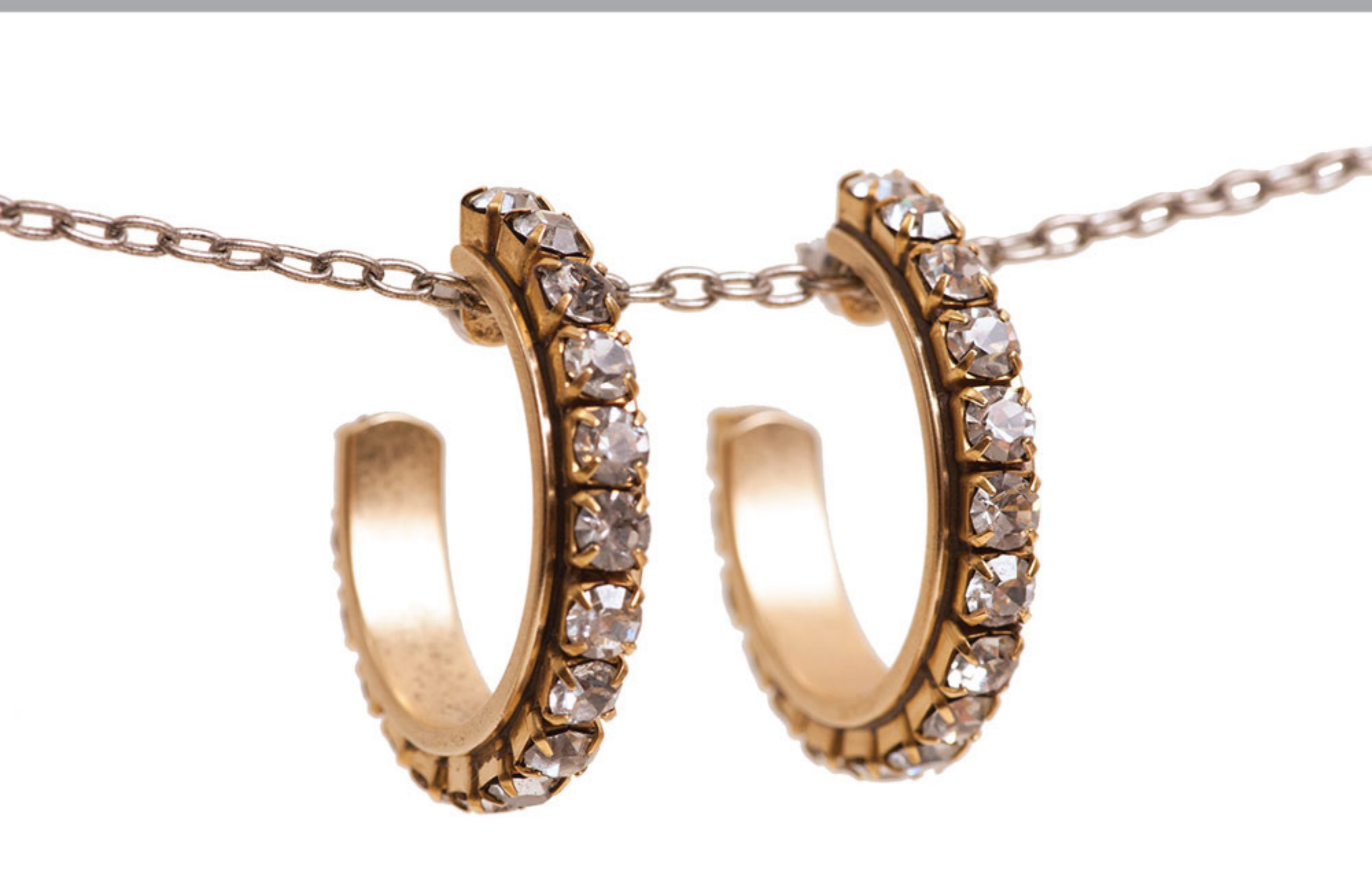
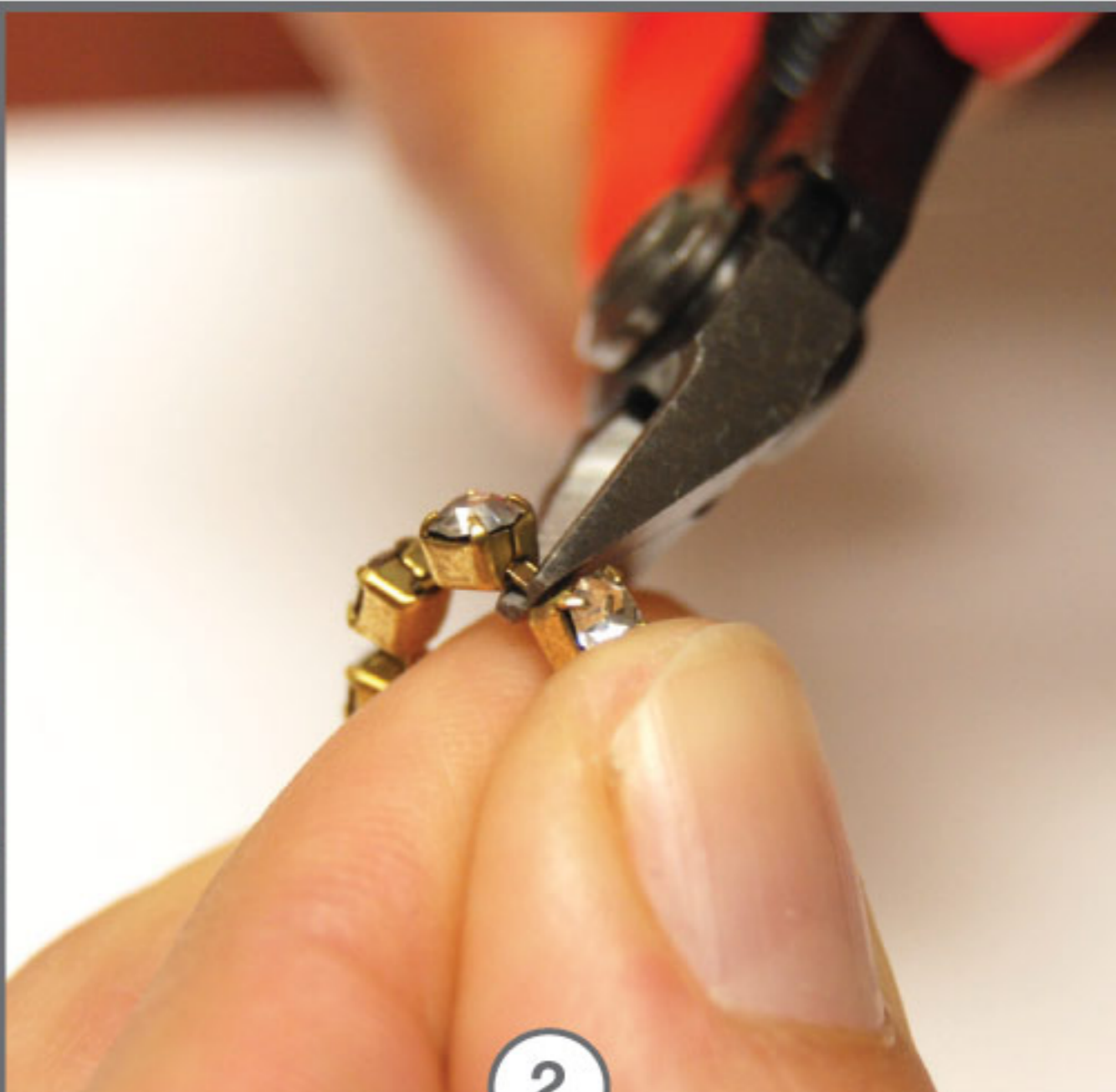


CREATE BLING CHANNEL EARRINGS WITH RHINESTONE CUP CHAIN & CRYSTAL CLAY



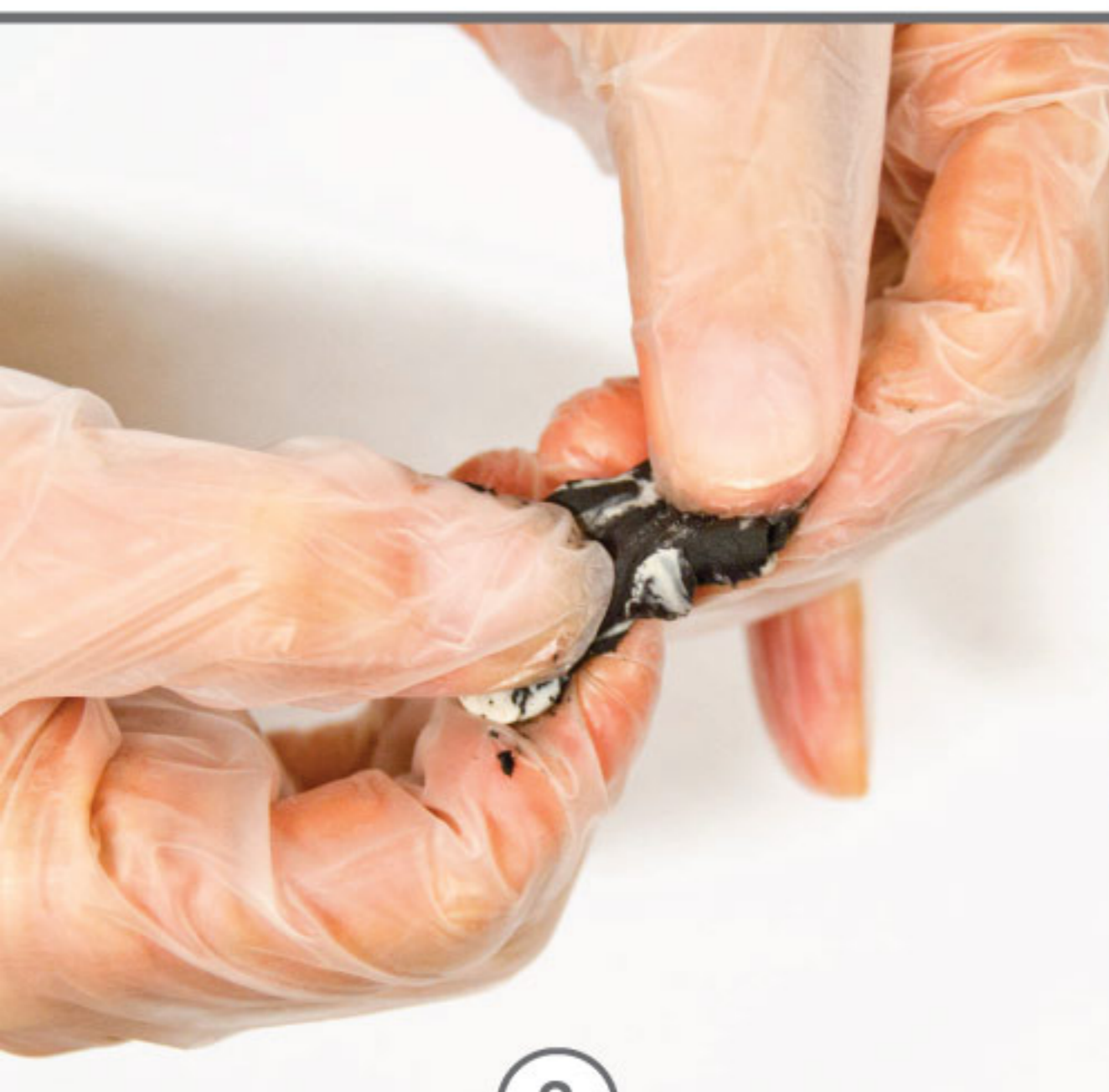
1

Count out two strips of 17 cups of the Rhinestone Chain 18ss. This will be the exact amount to fill both Channel Earring Posts.



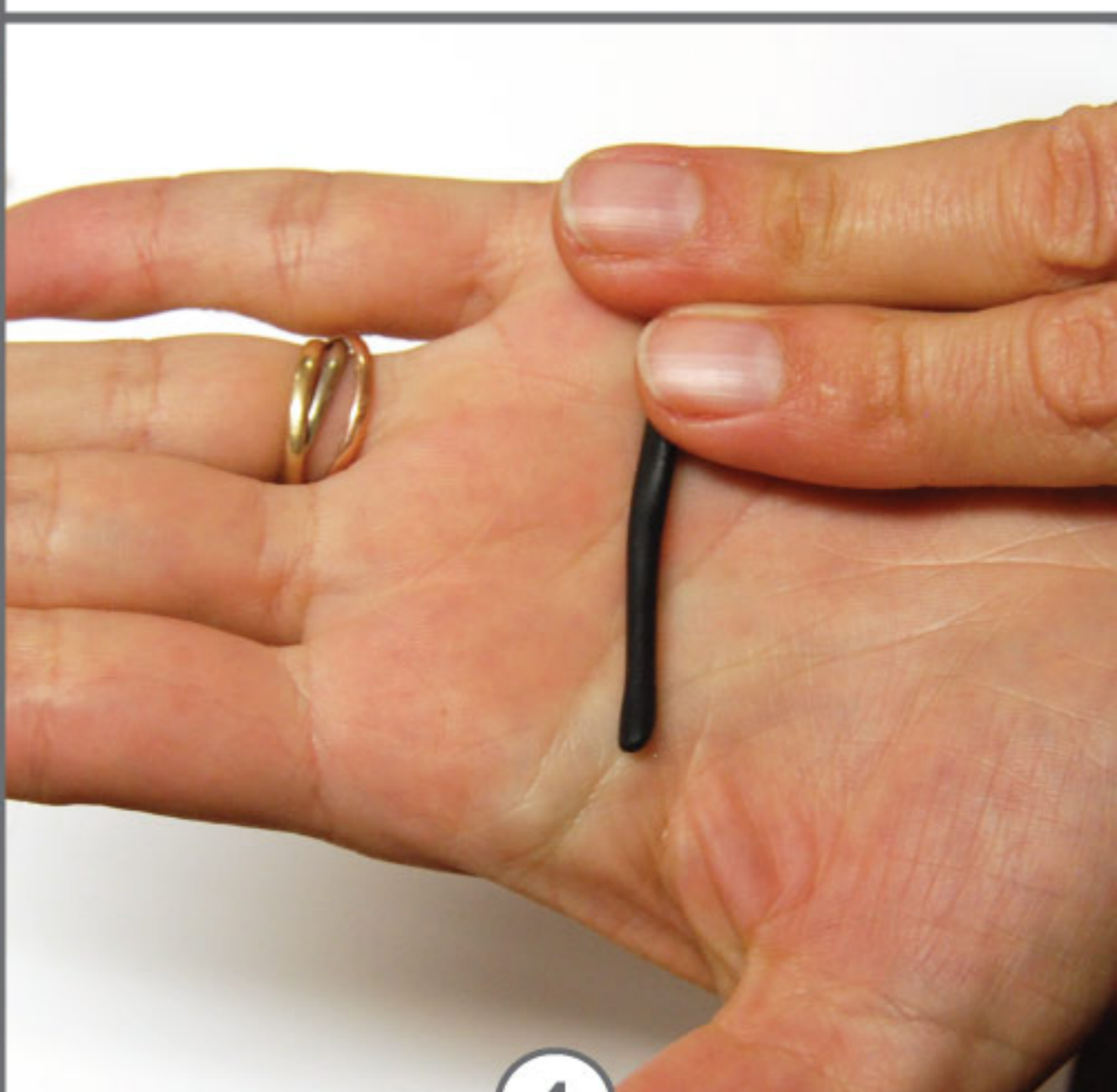
2

To prevent retractable metal link that connects the Rhinestone Chain from being visible, cut with flush cutters as close to cup as possible.



3

Mix Crystal Clay. Create equal size balls of Part A & Part B and blend together fully until no longer marbled.



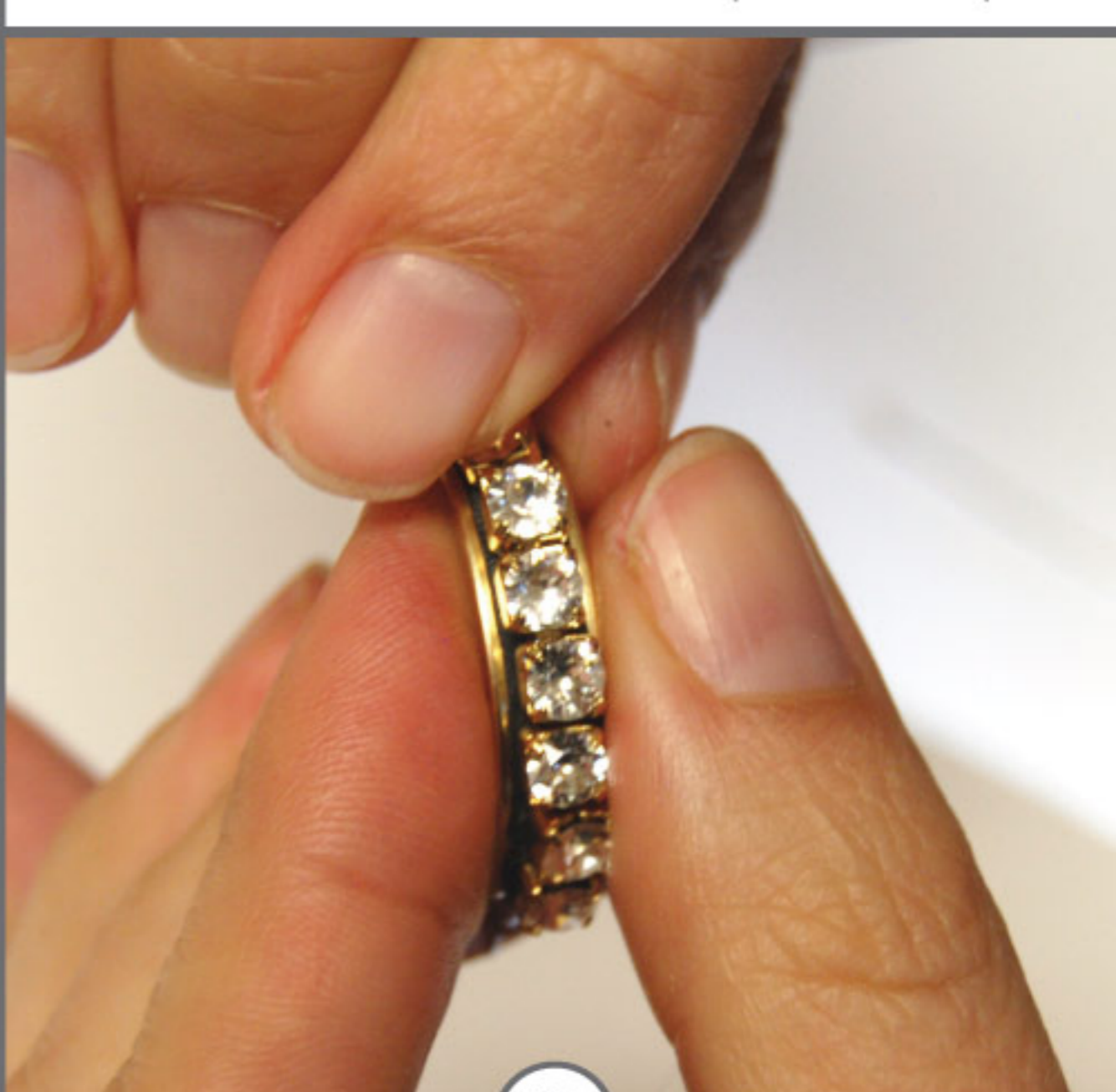
4

Once clay is thoroughly blended, you can take off gloves to work with clay. Roll into a smooth round ball. Then roll into a rope-like shape.



5

Embed thin layer of Crystal Clay into Channel. Start at one end and use thumb to push the clay down while pulling with the other hand.



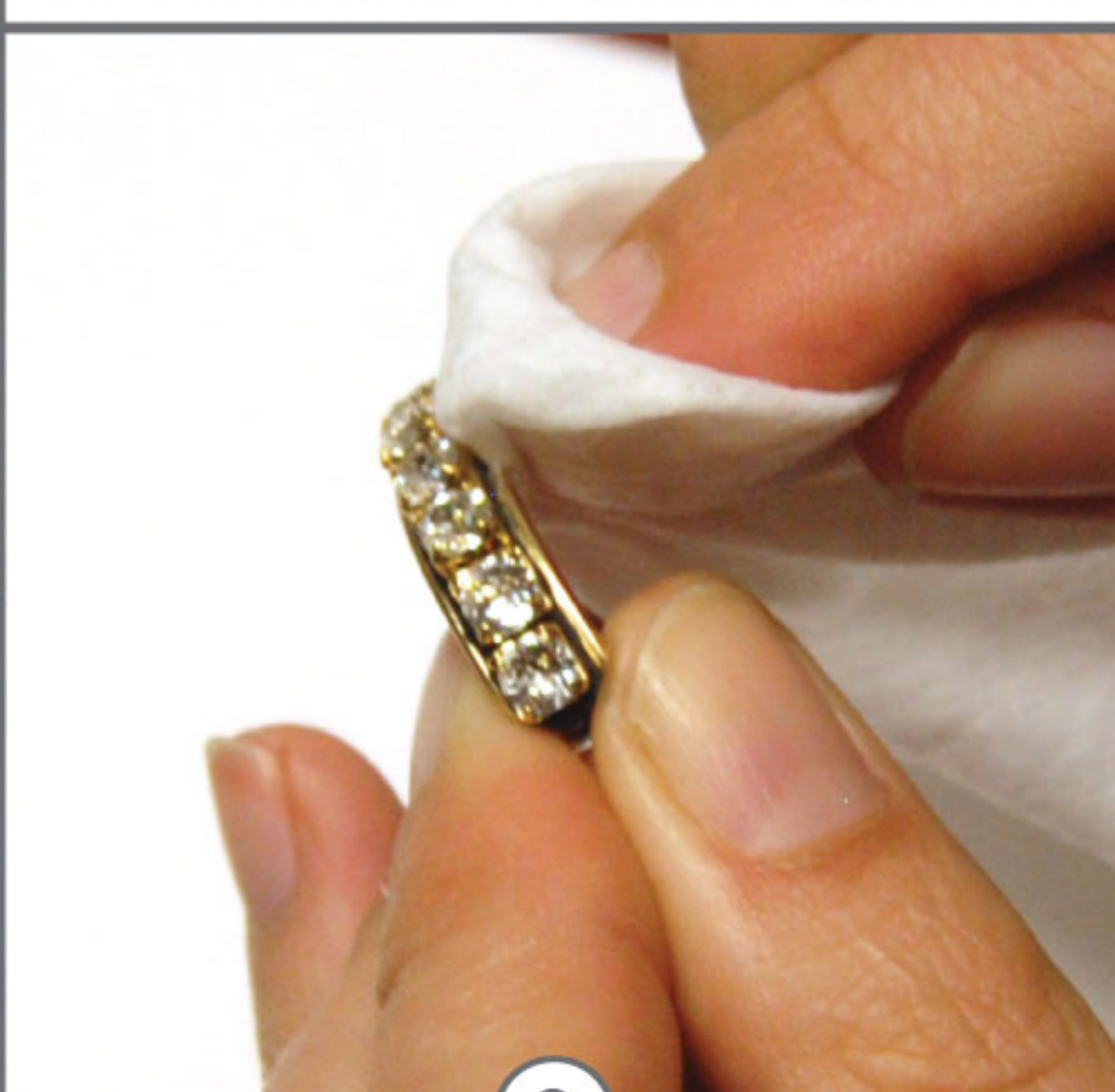
6

Begin at one end of channel and gently press the first crystal cup of your rhinestone chain into clay, continue with rest, keep cups close.



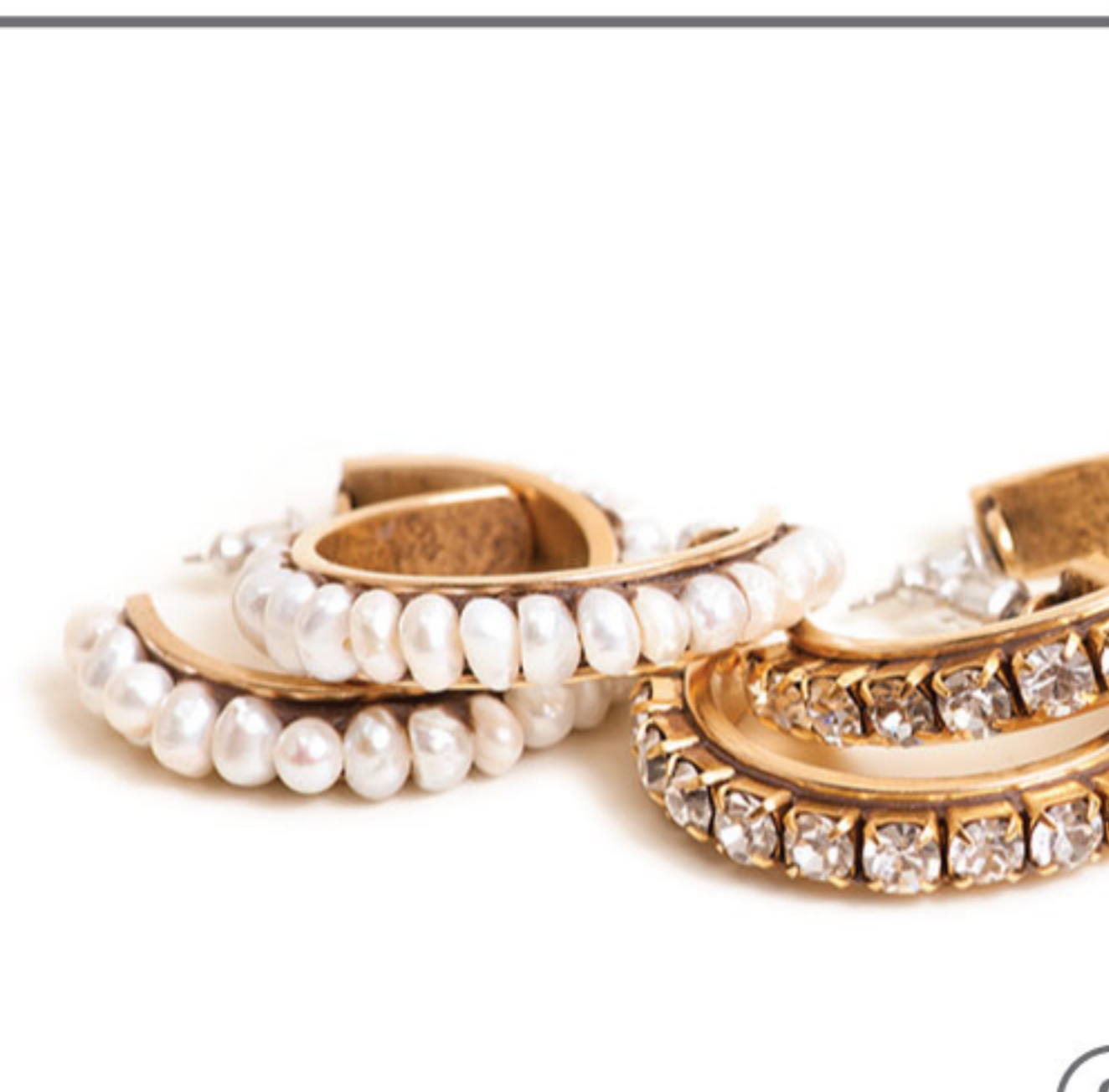
7

Once chain is gently pressed into clay, go back and press down crystal cups a little more firmly to embed into the Crystal Clay.



8

Some Crystal Clay may ooze up the sides. Use the headpin or toothpick to scrape away any excess. Then wipe with a wet wipe.



9

Repeat steps 1-7 to create a matching set of these lovely earrings. Use chatons or pearl beads to create a totally different look with this same technique.