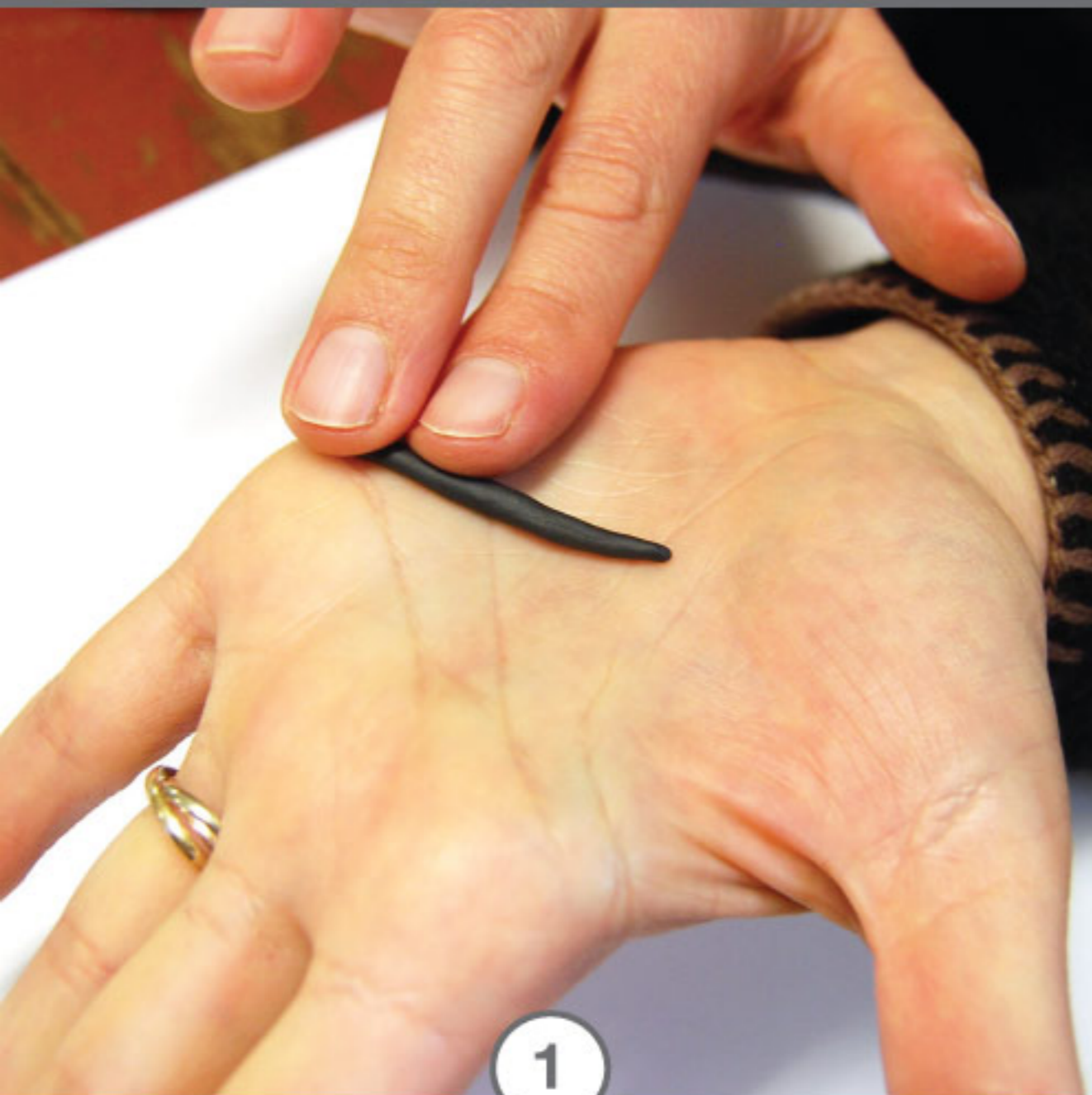


CREATE DECORATIVE PENDANTS WITH CHAIN, CRYSTAL CLAY AND OPEN BEZEL DEEP CHANNEL PENDANTS



1

Mix Crystal Clay according to manufacturer's directions. Roll mixed clay into ball and then roll into snake like shape.



2

Beginning at the looped area of the Open Bezel Deep Channel, start to adhere the Crystal Clay. Pat clay all the way around bezel.



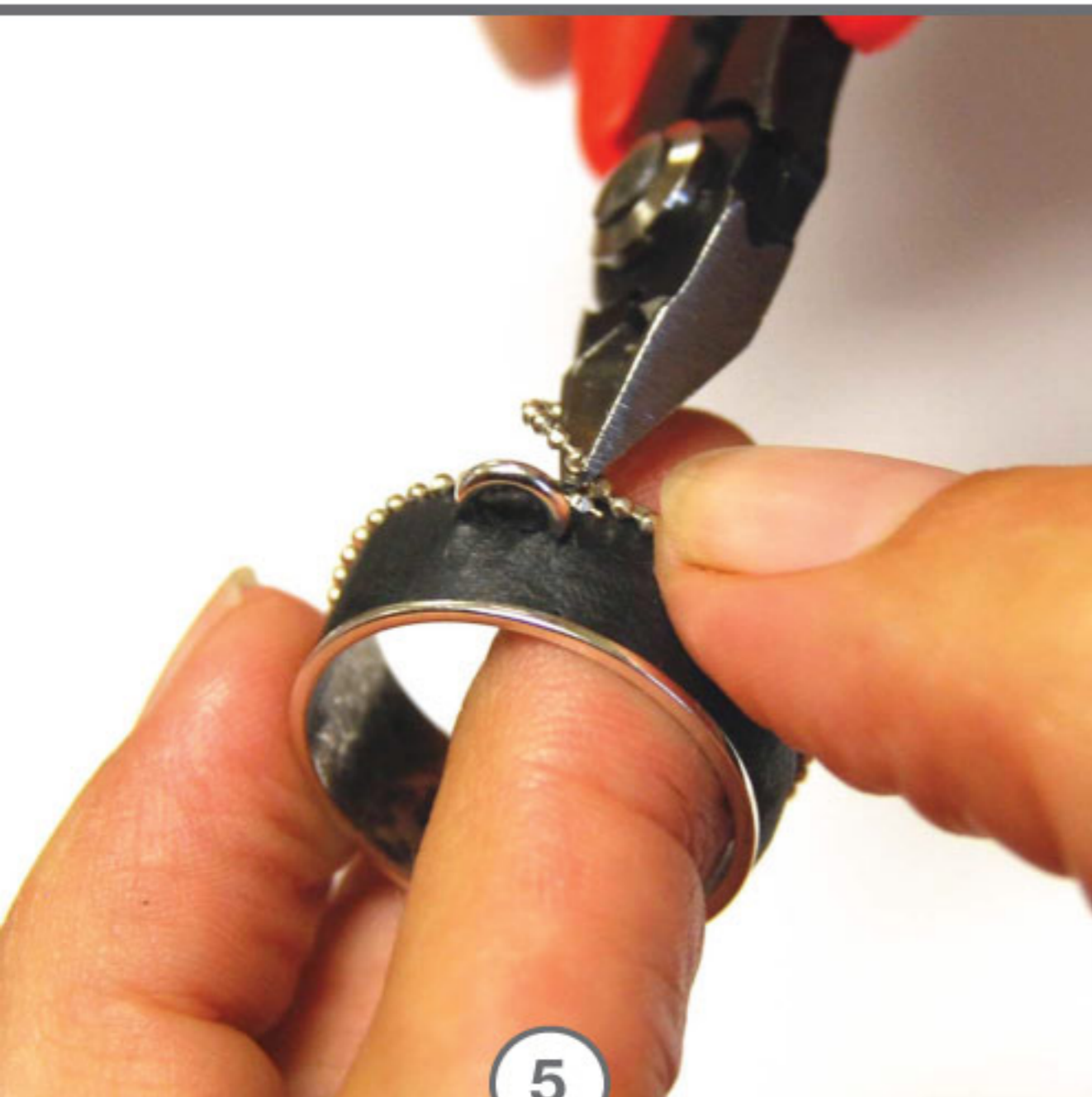
3

Pinch off any excess. Use fingers to pat smooth. Use a toothpick to make sure that the clay lays flat inside of the loop.



4

Use a wet-wipe to remove any Crystal Clay that may have gotten on your hands or on the sides of the Open Bezel Deep Channel.



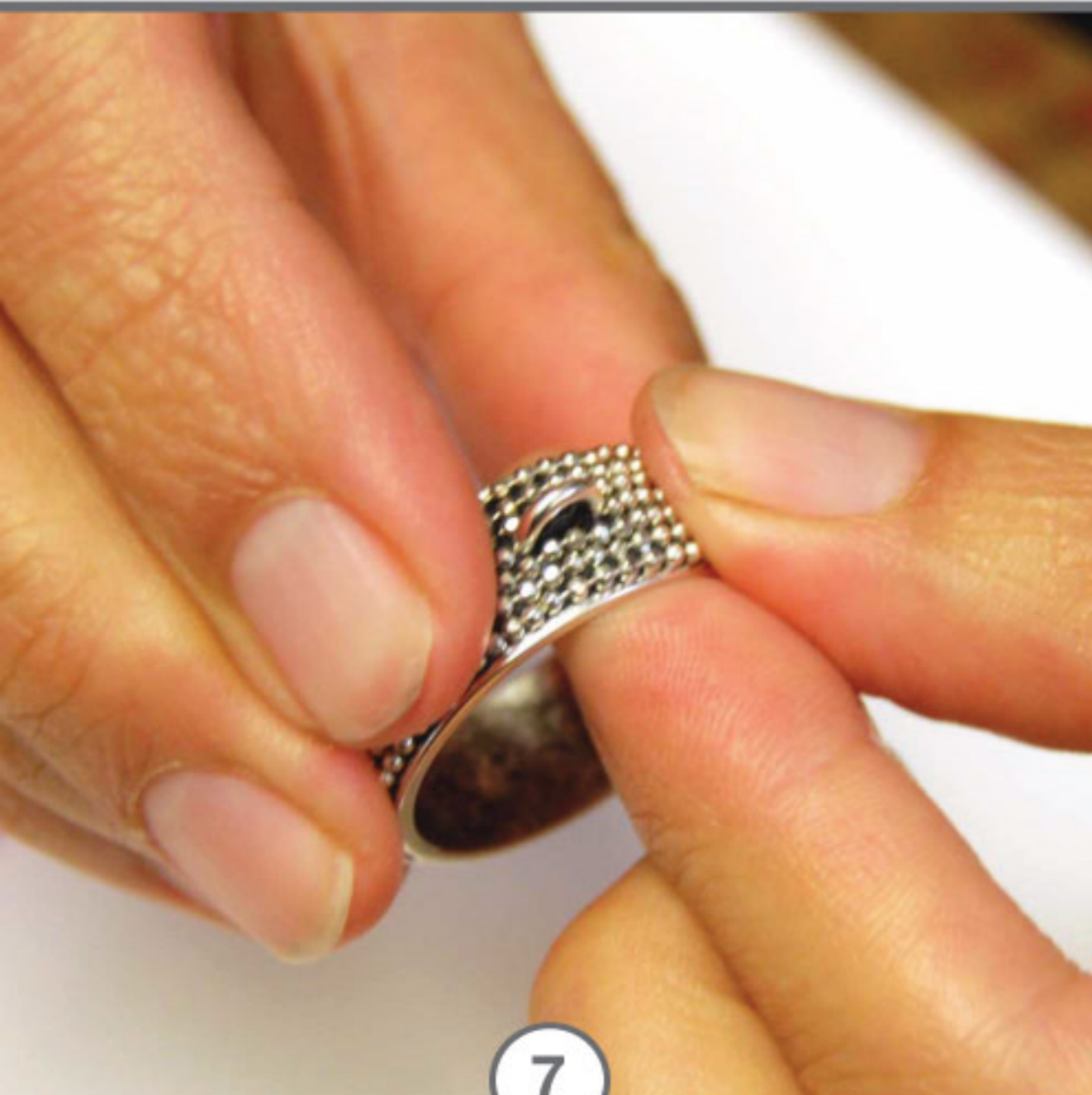
5

Wrap Faceted Bead chain all the way around to the start point. Use Flush Cutters to cut the chain where the chain begins to overlap.



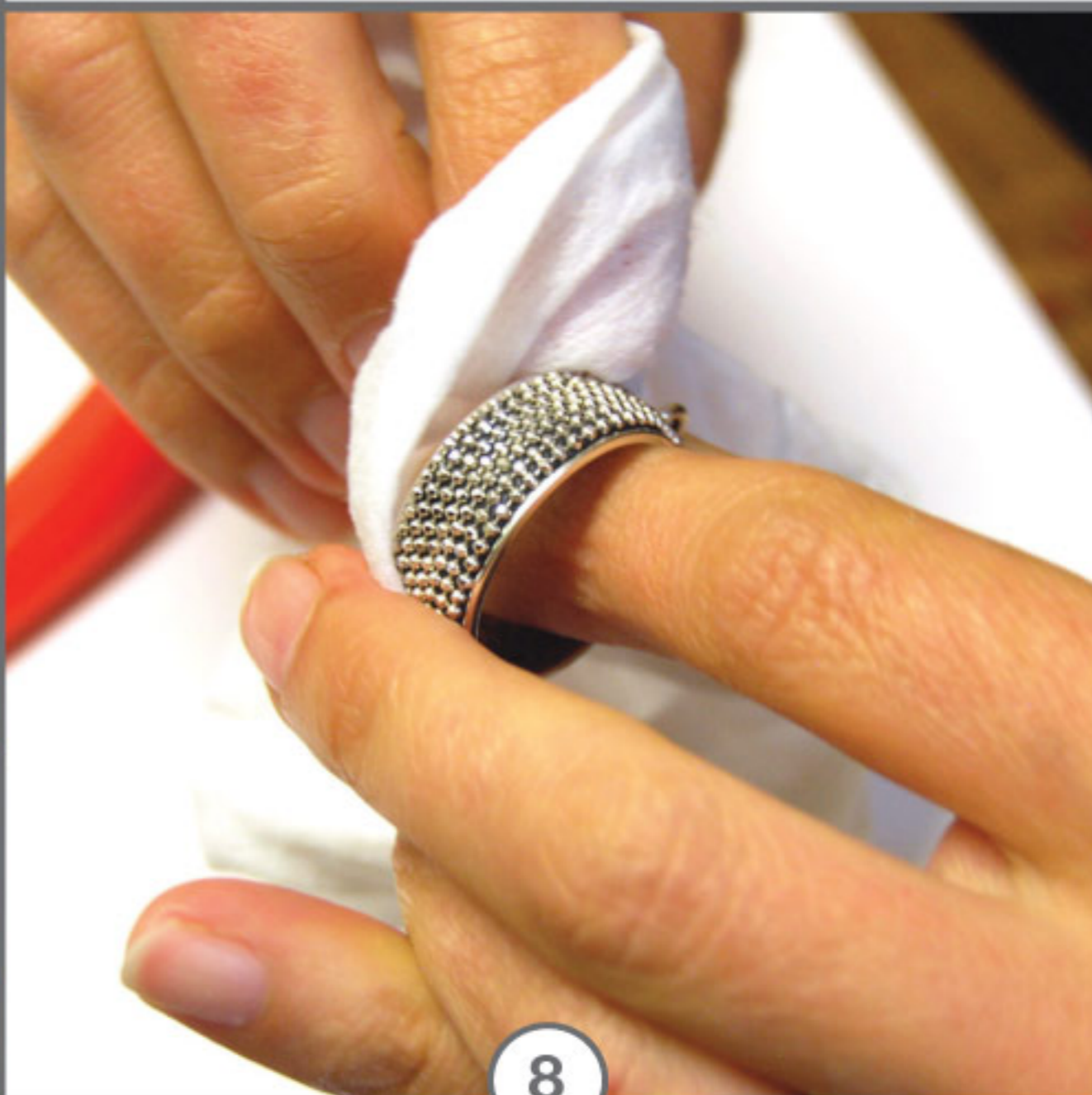
6

Repeat with each row. Wrap it until you come to the beginning and then cut. Do this until bezel is fully covered.



7

Once the Faceted Bead Chain is fully covering the Open Bezel Deep Channel, use your fingers to gently embed the chain into the clay.



8

Use a wet-wipe to clean up any clay on the chain or the side edges of bezel. It will harden like cement, so it's best to remove it now.