



NUNN DESIGN®

How to Instructions For Bird On a Wire Necklace



We look forward to bringing you exclusive innovations
and distinctive products this year and beyond.

www.nunndesign.com

SHOP NUNN DESIGN SUPPLIES:

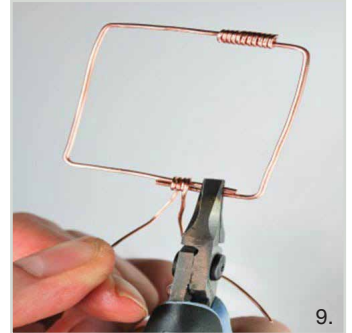
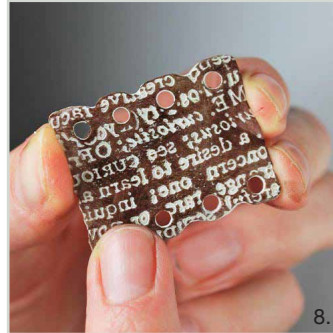
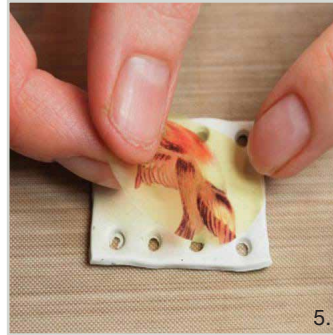
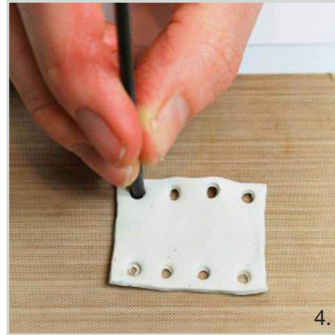
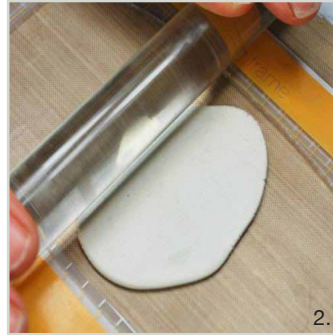
Crystal Clay White (cryclay-white)
 Small Hammered Flat Cable Chain - Antique Copper (shfc-cb)
 Large Jump Ring - Antique Copper (ljrc-b)
 Transfer Sheet Nature (tsn)
 Nunn Design Sealant (sealant)

OTHER SUPPLIES:

16g and 20g copper wire
 rubber stamp and StazOn ink
 gilder's paste
 coffee straw
 liver of sulfur
 playing cards

TOOLS NEEDED:

flush cutter
 hammer
 bench block
 chain and round-nose pliers
 X-Acto knife
 Teflon mat
 acrylic roller
 tissue blade
 sanding file



TO ASSEMBLE THE PENDANT

STEP 1: (Image 1)

Follow the manufacturer's instructions for the handling and mixing Crystal Clay. For mixing the Crystal Clay, it is best to wear your gloves. Pinch off two equal sized balls, approximately the size of a small pea, of Part A and Part B. Blend together fully until the clay is no longer marbled and is uniform in color. You have approximately 90-120 minutes of working time before the clay starts to harden, so take your time. Once the clay is thoroughly mixed, remove your gloves to make it easier to work with the clay.

SHOP NUNN DESIGN SUPPLIES:

Crystal Clay White (cryclay-white)
Small Hammered Flat Cable Chain - Antique Copper (shfc-cb)
Large Jump Ring - Antique Copper (ljrc-b)
Transfer Sheet Nature (tsn)
Nunn Design Sealant (sealant)

STEP 2: (Image 2)

Roll the thoroughly mixed Epoxy Clay-Crystal Clay between your palms until it forms a smooth round ball. I like it to be smooth because it prevents from having creases once the impression is made. Roll the clay flat onto a Teflon mat making it "8 cards thick."

STEP 3: (no image)

Cut out a rectangle shape of Crystal Clay to your desired size using a tissue blade.

STEP 4: (Image 3)

To make an impression into the Crystal Clay, sprinkle or rub baby powder over the surface of your Clay Squisher or texturing source. The baby powder will help the clay not stick to your surface. Gently lift your cut rectangle and lay it on top of your favorite Clay Squisher or texturizing pad and squish down with equal force.

STEP 5: (Image 4)

Place the stamped rectangle onto a Teflon mat (stamp side down) and cut out holes at the top and bottom of the rectangle using a coffee straw.

STEP 6: (no image)

Select an image from one of the Nunn Design Transfer Sheets. With a pair of scissors, trim the image on the inside lines of the outlined shape. Continue trimming and adjusting until it fits.

STEP 7: (Image 5)

Fill a small shallow dish with warm water approximately $\frac{3}{4}$ of the way full. The Nunn Design Transfer Sheets are printed on a film with a paper backing. When the transfer sheet is submerged into water, it separates the film front from the paper backing. Drop one of your trimmed transfer sheets into the water and wait 30 seconds. The film is very fragile, so you will want to be gentle when handling it. When you remove the transfer sheet from the water, you will be able to feel the film and paper- backing slide apart from one another and then hold them in your fingers. Leave the paper backing attached to the film front and dry your fingers with a paper towel.

Slide the wet film of the transfer sheet image off the paper backing and onto your Crystal Clay while the clay is still moist. Move the transfer sheet gently with your fingers until you have it in the position you want. Once the transfer sheet is in position, press gently with your Q-tip in the center of the image and gently burnish (another word for rub) the film down with your Q-tip. If your film won't stick to your surface, remove the film and paint a thin coat of the Nunn Design Sealant and reapply. Allow your piece to cure overnight.

STEP 8: (Image 6)

Once your piece has fully cured, use an Xacto Knife to carve and shape the edges of your piece to add detail and decoration. Sand edges as needed with a file.

STEP 9: (Images 7-8)

Using a brown ink pad, add color to the front and back of your piece. Add additional depth by using black Gilders Paste as an accent color. Seal both sides of the pendant with sealant and let dry.

STEP 10: (Image 9)

Shape a 16g wire frame around your rectangle resin clay piece. Secure the loose ends together with 20g wire. Add patina to wire, if so desired, by soaking copper in liver of sulfur.

STEP 11: (Image 10)

Using 20g wire, make three wraps at the base of the frame then thread the wire through the first hole in your resin clay creation. Make three wraps again around the base of the frame and thread wire through the remaining holes. Repeat the process on the opposite side.

SHOP NUNN DESIGN SUPPLIES:

Crystal Clay White (cryclay-white)
Small Hammered Flat Cable Chain - Antique
Copper (shfc-cb)
Large Jump Ring - Antique Copper (ljrc-b)
Transfer Sheet Nature (tsn)
Nunn Design Sealant (sealant)

STEP 12: (Image 11)

Cut two, 9 inch lengths of copper chain and attach to the copper frame with large jump rings. Add a jump ring to the opposite ends of the chain.

STEP 13: (Image 12)

Using 3 inches of 16g copper wire, form, wrap and hammer a hook clasp. Attach clasp to one of the jump rings.

LEARN MORE:

Click on the links to visit tutorials.

- **BLOG: Epoxy Clay, Transfer Sheets and Gel du Soleil**
- **VIDEO: How to Create a Faux Porcelain Look with Epoxy Clay, Transfer Sheets and UV Resin**