

How to Make This Kit: Organic Tag with Crystal Charm Necklace

Designer: Becky Nunn

NUNN DESIGN SUPPLIES IN KIT:

- (1) Organic Tag Circle Large Single Hole
- (1) Open Back Bezel Circle 8mm
- (1) Preciosa Crystal 8mm Circle (18") Satellite Chain
- (3) 6mm Textured Jumpings
- (1) 9mm Textured Jumpings
- (2) Crimp Connectors
- (1) 11.9 mm Lobster Clasp

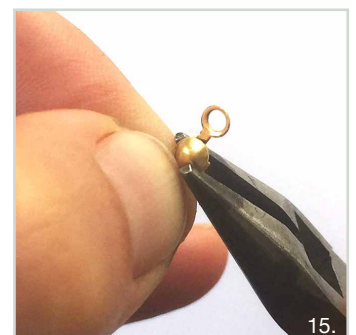
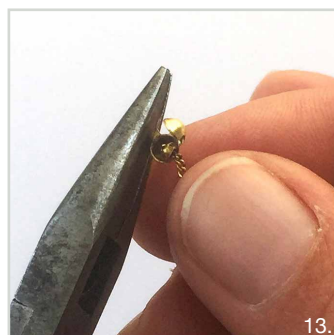
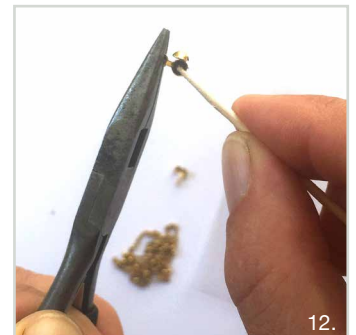
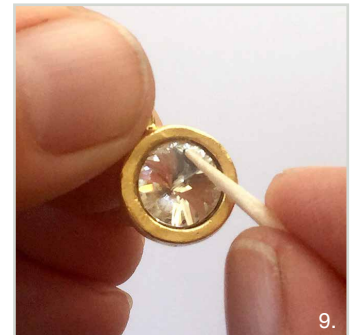
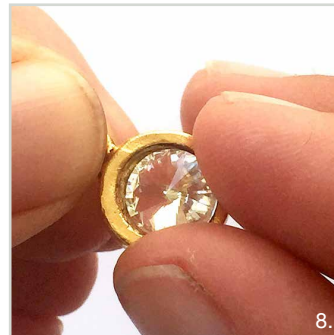
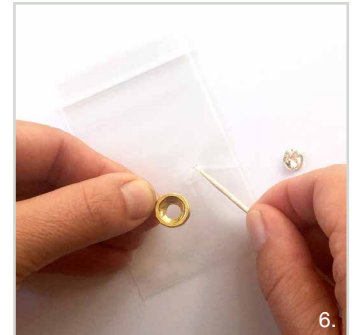
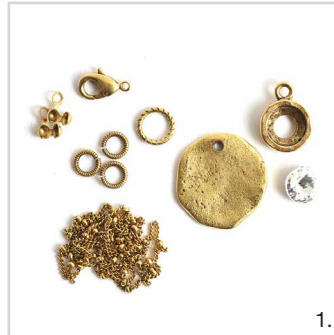


OTHER SUPPLIES NEEDED:

- Q-Tips
- Rubbing Alcohol
- Plastic Bags
- Glue (E6000)
- Toothpicks

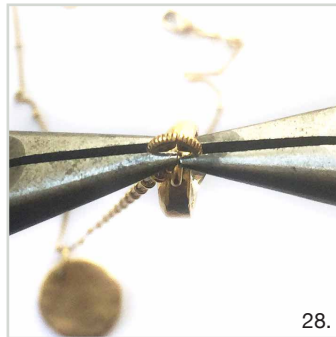
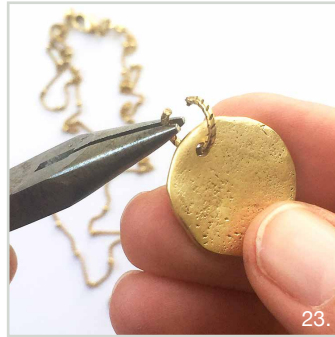
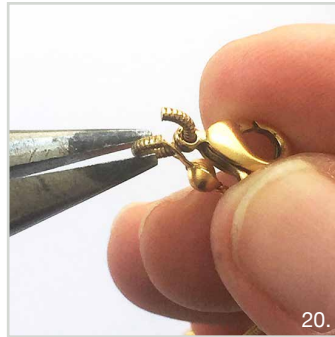
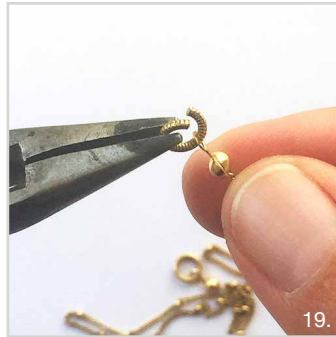
TOOLS NEEDED:

- 2 Pairs Needle Nose Pliers



How to Make This Kit: Organic Tag with Crystal Charm Necklace

Designer: Becky Nunn





MAKING OF THE CRYSTAL CHARMS

STEP 1: (Images 3-4)

The Nunn Design Findings are oxidized to provide an aged look to the precious metal plating. Clean the bezel thoroughly prior to applying glue. Dip the tip of a Q-Tip into rubbing alcohol and clean away any of the blackened oxidization from the bezel.

STEP 2: (Images 5-9)

Squeeze a small amount of glue onto a piece of plastic. Dip a toothpick into the glue and smear the glue around the inside edges of the bezel. Insert the crystal chaton. If there is any excess glue that has squished out the sides, clean it up with a toothpick and rubbing alcohol.

ASSEMBLING THE CHAIN FOR THE NECKLACE

STEP 3: (Images 10-11)

In order to attach the lobster clasp closure onto the Satellite Chain, you will first need to attach the crimp connectors onto the ends of the chain. Squeeze a small amount of glue onto a piece of plastic.

STEP 4: (Images 12-14)

Use a pair of needle nose pliers to hold the “loop” end of the crimp connector. Dip a toothpick into the glue and smear the glue around the inside of the crimp connector. Insert the end of the Satellite Chain. Use a second pair of needle nose pliers to close the crimp connector.

STEP 5: (Image 15)

If the crimp connector looks slightly “wonky”, use the needle nose pliers to slightly adjust the fit. Repeat for the other end of the chain.

TIP: The Satellite Chain within the Nunn Design Kit has been pre-cut at 18” and is ready to be assembled. When cutting Nunn Design Satellite Chain from the spool, do not cut right before or after any of the round bead spacers. Always cut 1/16” after a bead spacer. This will ensure that the bead spacer does not slip off the chain.

STEP 6: (Images 16-21)

Using two pair of needle nose pliers, hold one of the Jumpring 6mm Textured Circle at 3 o’clock and 9 o’clock. Pull one of the sets of pliers with one hand forward and the other set of pliers back to open the jumpring. Insert onto the jumpring one of the ends of the crimp connector (now attached to the Satellite Chain) and the lobster clasp. Hold the jumpring again at 3 o’clock and 9 o’clock. Pull one of the sets of pliers with one hand forward and the other set of pliers back to close the jumpring.

STEP 7:

For the other side, repeat Step 6 to open the jumpring with the needle nose pliers. Insert onto the jumpring the other end of the Satellite Chain’s Crimp Connector. Close the jumpring with the needle nose pliers.

TIP: Make sure that the jumprings attached to the Crimp Connectors are very flush and there is not a gap. The Crimp Connector loop is very fine and can easily slip out if there is a slight gap in the jumpring. If you do have a gap, hold the jumpring at 3 o’clock and 9 o’clock with the needle nose pliers and move back and forth until it is flush.

ASSEMBLING THE CHARMS ONTO THE NECKLACE:

STEP 8: (Images 22-28)

To attach the two focal charms to the chain, open the Jumpring 9mm Textured Circle and attach the jumpring onto the Organic Tag. While the jumpring is still open, insert the Satellite Chain and then close the jumpring. Do the same for the Crystal Charm.

STEP 9: (Images 29-30)

Yippee! You are done!