

How to Make This Kit: Organic Tag with Crystal Charm Bracelet

Designer: Becky Nunn

NUNN DESIGN SUPPLIES IN KIT:

- (1) Charm Bracelet
- (1) Organic Tag Circle Large Single Hole
- (1) Open Back Bezel Circle 8mm
- (1) Preciosa Crystal 8mm Circle
- (1) 6mm Textured Circle Jumpings
- (1) 9mm Textured Circle Jumpings



OTHER SUPPLIES NEEDED:

- Q-Tips
- Rubbing Alcohol
- Plastic Bags
- Glue (E6000)
- Toothpicks

TOOLS NEEDED:

- 2 Pairs Needle Nose Pliers



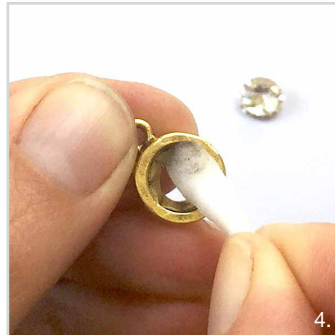
1.



2.



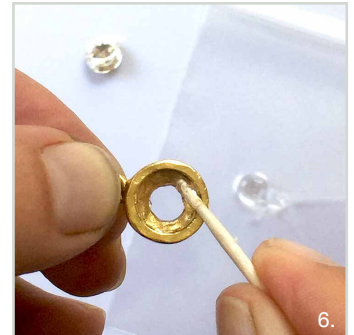
3.



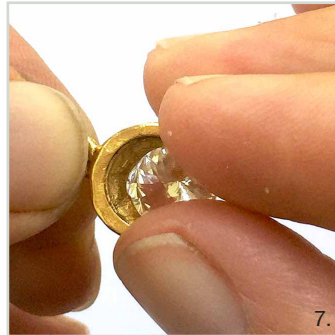
4.



5.



6.



7.



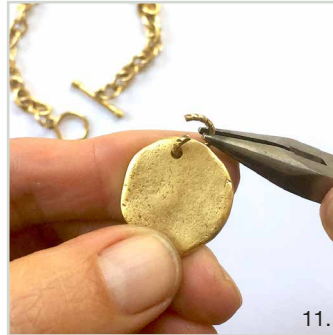
8.



9.



10.



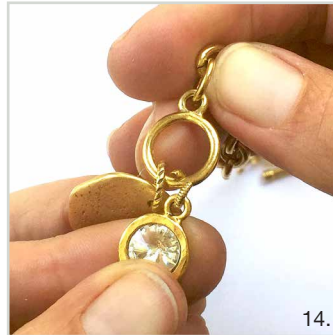
11.



12.



13.



14.



15.



MAKING OF THE CRYSTAL CHARMS

STEP 1: (Images 3-4)

The Nunn Design Findings are oxidized to provide an aged look to the precious metal plating. Clean the bezels thoroughly prior to applying the glue. Dip the tip of a Q-Tip into rubbing alcohol and clean away any of the blackened oxidization from the bezels.

STEP 2: (Images 5-8)

Squeeze a small amount of glue onto a piece of plastic. Dip a toothpick into the glue and smear the glue around the inside edges of the bezel. Insert a crystal chaton. If there is any excess glue that has squished out the sides, clean it up with a toothpick and rubbing alcohol.

ASSEMBLING THE BRACELET

STEP 3: (Images 9-12)

To attach the Organic Flat Tag, open the 9mm Textured Circle Jumping using two pairs of needle nose pliers. Hold one pair of pliers at 3 o'clock and the other at 9 o'clock. Pull one of the sets of pliers with one hand forward and the other set of pliers back to open the jumping. Insert onto the jumping the Organic Flat Tag and attach it to the Toggle Ring. Hold the jumping again at 3 o'clock and 9 o'clock with the pliers. Pull one of the sets of pliers with one hand forward and the other set of pliers back to close the jumping.

STEP 4: (Images 12-15)

Using two pair of needle nose pliers, hold the 6mm Textured Circle Jumping at 3 o'clock and 9 o'clock. Pull one of the sets of pliers with one hand forward and the other set of pliers back to open the jumping. Add the Crystal Charm onto the jumping and then attach jumping to the Toggle Ring. Hold the jumping again at 3 o'clock and 9 o'clock. Pull one set of pliers forward with one hand and the other set of pliers back to close the jumping.

STEP 5:

There you have it! How easy was that!