

Make These Hammered Bitsy Rings with Crystal Clay and Gilding Flakes

Designer: *Becky Nunn*

NUNN DESIGN SUPPLIES:

SHOP:

[Buy & Try Hammered Bitsy Rings with Crystal Clay and Gilding Flakes](#)

SHOP WHOLESALE:

[Buy & Try Hammered Bitsy Rings with Crystal Clay and Gilding Flakes](#)

[Nunn Design Hammered Bitsy Rings Crystal Clay-Black](#)
Gilding Flakes

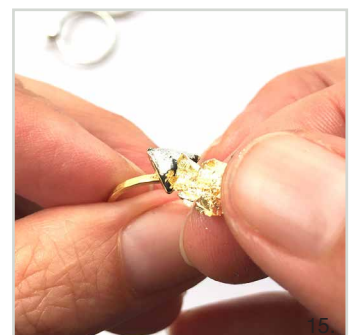
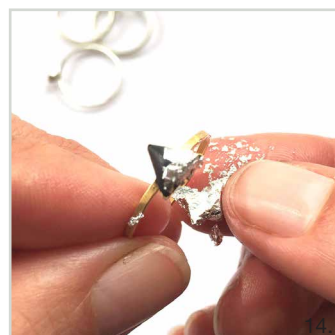
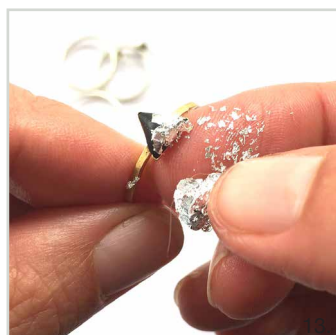
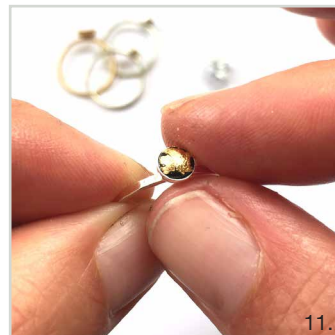
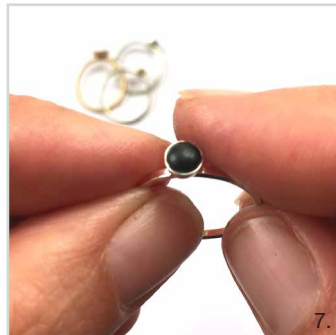
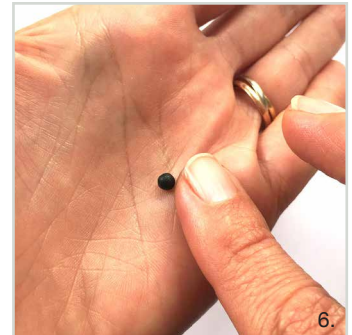


OTHER SUPPLIES:

- Rubbing Alcohol
- Q-Tips
- Wet-wipes
- Toothpicks
- Business Cards or glossy card stock

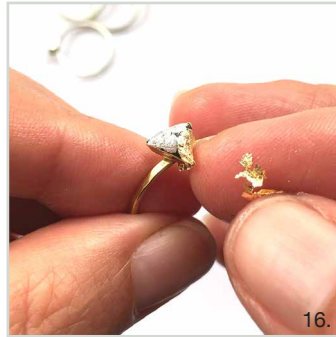
LEARN MORE:

[Read the full written tutorial.](#)



Make These Hammered Bitsy Rings with Crystal Clay and Gilding Flakes

Designer: Becky Nunn



16.



17.



18.

This tutorial features Nunn Design Hammered Bitsy Rings. To manufacture these little cuties, a brass bezel is soldered with lead-free solder onto a brass ring shank. We then plated the rings with 24k gold and .999 fine silver. A final touch of oxidization is applied to provide an aged look to the precious metal. All of this product is made in the USA.

Here is a tutorial walking you through how to create this look using the hammered bits rings!

STEP 1: (Images 2-3)

The Nunn Design Findings are oxidized to provide an aged look to the precious metal plating. The oxidization, when it comes into contact with the Crystal Clay could change the color of the clay. To avoid this, clean the findings thoroughly prior to applying the clay. Get the tip of a Q-Tip wet with rubbing alcohol and clean away any of the blackened oxidization on both sizes of the Hammered Bitsy Rings.

STEP 2: (Image 4)

Follow the manufacturer's instructions for the handling and mixing of the black Crystal Clay. Crystal Clay is epoxy clay that air-dries. It sets in 2 hours and continues to cure 14-16 hours. There is no baking required, no shrinkage.

STEP 3: (Image 5)

While wearing gloves, pinch off two equal lentil sized balls of Part A and Part B and blend together fully until the clay is no longer marbled and uniform in color. You have approximately 90-120 minutes of working time before the clay starts to harden, so take your time. Once the clay is thoroughly mixed, remove your gloves to make it easier to work with the clay.

TIP: If the Crystal Clay is really sticking, let it sit for 15 minutes. This will allow the fresh clay to have time to set-up a little bit, resulting in it not being as sticky to manage.

STEP 4: (Image 6)

Pinch off a very small ball of clay and roll it into a smooth ball using the palm of your hand and fingers. It will take time to get just the right amount of clay that you will need insert into the Hammered Bitsy Ring bezel, so be patient if you have to remove excess clay or add more the first time you do this.

STEP 5: (Image 7)

Press the small smooth round ball of clay into the ring bezel with your fingertips. On the Hammered Bitsy Drop and Triangle Rings, use a toothpick to push the Crystal Clay into the corners of the bezel.

STEP 6:

Wipe your hands thoroughly with a wet-wipe. Wipe away any excess Crystal Clay from the ring bezel (if any is on it). The Crystal Clay will harden like cement, so it is best to make sure that any area that you don't want clay is clean.

Make These Hammered Bitsy Rings with Crystal Clay and Gilding Flakes

Designer: Becky Nunn



STEP 7:

If you have fingerprints in your clay, or if you want the surface to be smoother than you have it, wet your fingers slightly with water and rub the Crystal Clay. The water will help smooth the clay.

STEP 8: (Images 8-9)

Place some Gilding Flakes onto your work surface. Wet the end of a toothpick and gently touch a Gilding Flake to pick it up. Place the flake onto the wet Crystal Clay and slightly tack into place.

STEP 9: (Images 10-16)

Once the Gilding Flake is released from the toothpick, start to rub the flake into the Crystal Clay with your fingertips. The Gilding Flakes tear very easily, but don't worry. Just continue to adhere it onto the clay until you have your desired effect. Gently rub the Gilding Flakes into the Crystal Clay until it is smooth.

STEP 10:

Let the pieces cure. They will set up in 2 hours and will continue to cure for 14-16 hours.

DESIGN OPTION: (Images 17-18)

To have a high gloss finish, mix-up a batch of Nunn Design 2-Part Resin and drizzle it onto the surface of the Crystal Clay. Although this is a nice effect, it isn't required to protect the gilding flakes.