

NUNN DESIGN SUPPLIES:

SHOP:

[Buy & Try Colorized Resin on Organic Metal Beads](#)

SHOP WHOLESALE:

[Buy & Try Colorized Resin on Organic Metal Beads](#)
[Nunn Design Organic Metal Beads](#)
[Nunn Design 2-Part Resin Kit](#)
[Castin' Crafts Opaque Pigments](#)

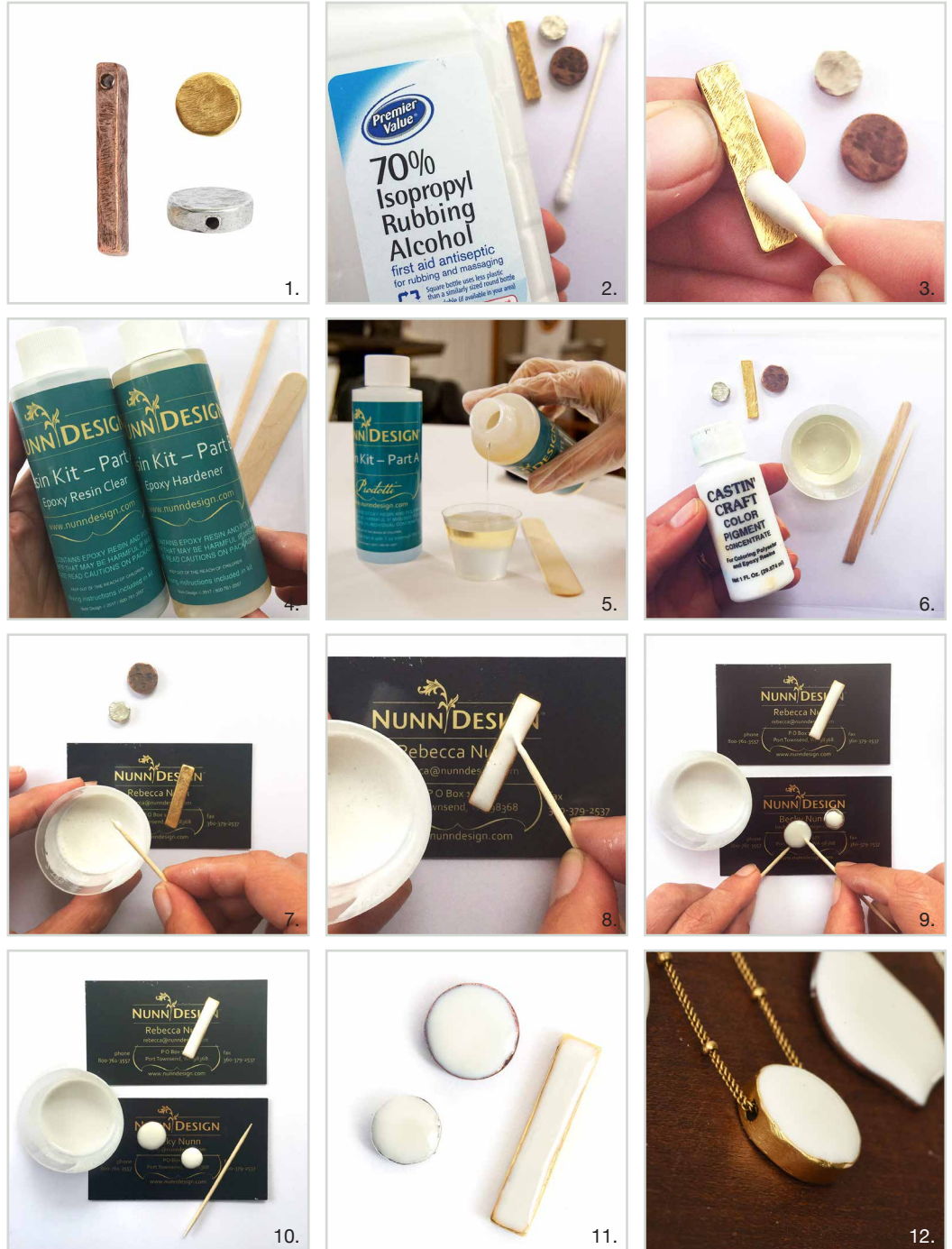


OTHER SUPPLIES:

- Wet-wipes
- Toothpicks
- Stir Sticks
- Mixing Cups
- Business Cards or glossy card stock
- Rubbing Alcohol
- Plastic Bags
- Q-Tips

LEARN MORE:

[Read the full written class tutorial.](#)
[Watch a quick 1 minute video](#) overview of this technique.
[Watch the full class video](#), it is 13:19 minutes in length.



STEP 1: (Images 2-3)

The Nunn Design Organic Metal Beads are oxidized to provide the antique look to the precious metal plating. The oxidation, when it comes into contact with the resin, could change the color of the resin. To avoid this, clean the beads thoroughly prior to application of the resin. Dip the tip of a Q-Tip into rubbing alcohol and clean away any of the blackened oxidation from the tags surface.

STEP 2:

I tend to work in a small area (typically my kitchen table), so I like to work on a surface that projects can be easily moved around and not disturbed. Place some business

How to Make These Colorized Resin on Organic Metal Beads

Designer: Becky Nunn

cards or some heavy card stock onto your work surface, making it easy to move the beads without getting any resin on your fingers.

STEP 3:

Read the resin instructions for safety concerns regarding the Nunn Design Resin.

When I work with resin, I always:

- Place a large plastic bag over my work surface and tape it down.
- I make sure I have ventilation in my workroom.
- I wear gloves.
- I wear glasses (readers because I can't see anymore. Plus it protects my eyes!).
- I have a pile of wet wipes handy.

This is a great blog post that covers [20 Habits for Successfully Using Nunn Design 2-Part Epoxy Resin](#). Even if you are a seasoned resin mixer, this might be worth a read.

You can also watch this great video on [How to Mix Nunn Design Resin!](#)

STEP 4: (Images 4-5)

Place one cup (included in the Nunn Design Resin Kit) onto your table.

For curing purposes, it is very important that the resin be an exact 1 to 1 ratio of Part A and Part B. I suggest getting your eyes level with the resin so you can see the lines on the measuring cup.

Pour Part A of your resin kit up to the ½ fluid ounce mark on your measuring cup.

Pour Part B of your resin kit into the same cup until it is filled to the 1 fluid ounce mark. It is important to pour Part A first and then Part B. It is some chemical thing about the part A being heavier or something.

STEP 5:

Set your timer for 2 minutes. Using the stir stick from your kit (a popsicle stick or coffee stir stick will work great too), slowly and carefully stir your resin scraping the sides as you stir. Stir for the full 2 minutes. After 2 minutes, scrape both sides of your stir stick on the edge of your resin filled cup.

STEP 6: (Images 6)

For this tutorial, I'm adding Castin' Crafts Opaque Colorant White to the resin. You can mix the full 1 fluid ounce measuring cup of resin if you want, but I transfer the mixed resin into smaller cups because it is easier to stir and less messy to move around when less full. Transfer the resin to a smaller cup and squeeze a couple of drops of the white colorant into the resin. If the resin isn't as opaque as you would like, add more of the white colorant to the resin and continue to mix thoroughly.

TIP: Be sure that the colorant does not equal more than 10% of your resin as having more than 10% could cause issues with curing.

Here is another blog post that you might be interested in; [How to Make 2017 Summer Pantone Colors with Colorized Resin](#). In this post I list formulas for mixing Nunn Design Resin with Castin' Crafts Opaque Pigments to create colors from the 2017 Summer Pantone selection.

STEP 7: (Images 7-9)

Use a toothpick or stir stick to drizzle a small amount of colorized resin onto your Organic Metal Bead. It is always easiest to add just a wee bit then add more, versus



How to Make These Colorized Resin on Organic Metal Beads

Designer: Becky Nunn

pouring on too much and having to clean up the overflow.

With a toothpick, pull the colorized resin to the edges of the bead. Nunn Design's 2-Part Resin is a doming resin. The resin will get to the edges and stop, but will overflow if you have applied too much to the bead's surface area.

STEP 8: (Image 10)

You will want to 'babysit' your resin for the next 1 – 2 hours. If you see bubbles rising to the surface, using your hot breath, breathe on them. It isn't a "blow" sort of breath – more of a "huff" sort of a breath. The hot air will make the bubbles expand, rise to the surface and pop. As the resin starts to set-up and become thicker, it will be more difficult for the air to rise to the surface.

Make sure to check in on the curing resin and double check for air bubbles. If you do have some bubbles, use a toothpick to gently drag them over to the sides. This agitation process will help them to pop. When the resin is thick and taffy like in texture it is time to let it be. If you attempt to pop bubbles at this time, you may end up with a gooey mess.

STEP 9:

Let the resin cure. It will start to be hard to the touch as early as 12 hours, but the resin will continue to cure up to 72 hours.

TIP: If you have resin that has over poured and flowed off the beads and onto the card, let it go. Wait about 6 hours until the resin is at its "soft cure" phase. It will be easy for you to trim away the overspill by cutting it with scissors or flush cutters, or to peel it off the sides.

