

Make These Bitsy Earrings with Gold Mica Flakes & Resin - Buy & Try!

Designer: Becky Nunn

SUPPLIES NEEDED:

Nunn Design Earring Posts
Crystal Clay-Black
Nunn Design 2-Part Resin Kit
Gold Flakes or Glitter Roxs

OTHER SUPPLIES NEEDED:

Wet-wipes
Toothpicks
Stir Sticks
Mixing Cups
Business Cards or glossy card stock
Rubbing Alcohol
Plastic Bags
Q-Tips

TOOLS NEEDED:

Needle Nose Pliers
Tweezers (optional)



LEARN MORE:

Visit the blog post for this tutorial:
[Bitsy Earrings with Crystal Clay, Gold Flakes and Nunn Design Resin - Tutorial! Buy & Try!](#)

Watch the video for this tutorial:
[Make These Bitsy Earrings with Crystal Clay, Gold Flakes and Nunn Design Resin](#)

SHOP SUPPLIES:

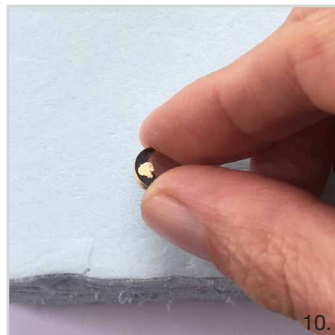
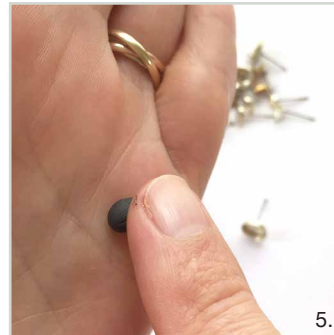
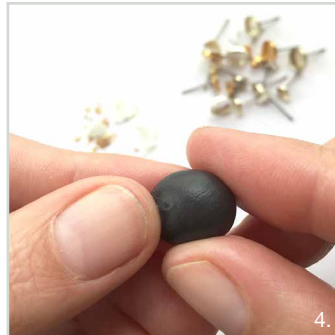
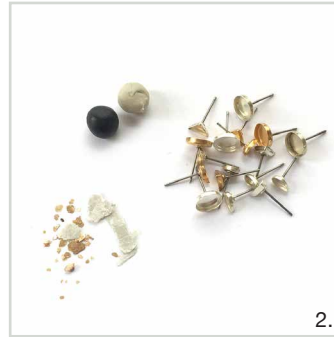
You can explore this technique with our Buy & Try Program. Buy the Bitsy Earring posts, Crystal Clay, Mica Flakes and Nunn Design Resin!

Buy & Try RETAIL:

[BUY & TRY Bitsy Earrings with Mica Flakes](#)

Buy & Try WHOLESALE:

[BUY & TRY Bitsy Earrings with Mica Flakes](#)



Make These Bitsy Earrings with Gold Mica Flakes & Resin - Buy & Try!

Designer: Becky Nunn



STEP 1: (image 1)

The Nunn Design Bezels are oxidized to provide the antique look to the precious metal plating. The oxidization, when it comes into contact with resin could change the color of the resin. To avoid this, clean the bezel thoroughly prior to applying the resin. Get the tip of a Q-Tip wet with rubbing alcohol and clean away any of the blackened oxidization, especially from the inside of the bezel.

STEP 2: (image 2)

Follow the manufacturer's instructions for the handling and mixing of the black Crystal Clay. Crystal Clay is epoxy clay that air-dries. It sets in 2 hours and continues to cure for 14-16 hours. There is no baking required, no shrinkage and in this tutorial, I don't even let it dry before applying the resin!

STEP 3: (images 3-4)

While wearing gloves, pinch off two equal sized balls of Part A and Part B and blend together fully until the clay is no longer marbled and uniform in color. You have approximately 90-120 minutes of working time before the clay starts to harden, so take your time. Once the clay is thoroughly mixed, remove your gloves to make it easier to work with the clay. For this tutorial, I mixed a small blueberry sized ball of both Part A and B of clay.

STEP 4: (images 5-7)

For each earring pinch off a very small ball of clay and roll it into a smooth ball in the palm of your hand. Press the ball into your bezel with your fingers to create an even flat smooth surface in the base of the earring.

STEP 5: (image 8)

Use a toothpick or a pair of tweezers to pick up gold flakes and place them into the uncured wet Crystal Clay. Once you have the gold mica flakes in the position that you want, use your fingertips to press the flakes down into the clay.

STEP 6:

Repeat with other sizes of Bitsy Earring Posts. On the Drop and Triangle Shapes, use a toothpick to press the Crystal Clay up into the crevices.

STEP 7: (image 9)

Once all the Bitsy Earring Bezels are filled and flush to the edge of the Bitsy Bezel, use a wet-wipe to clean away any excess clay from the sidewalls of the bezel.

STEP 8: (images 10-11)

Create a flat surface where the posts of the earrings can poke through and be level. I used a piece of packaging to create this surface.



STEP 9: (image 12)

Read the resin instructions for safety concerns regarding the Nunn Design Resin. When I work with resin, I always:

- Place a large plastic bag over my work surface and tape it down.
- I make sure I have ventilation in my workroom.
- I wear gloves.
- I wear glasses (readers because I can't see anymore. Plus it protects my eyes!).
- I have a pile of wet wipes handy.

We have a great blog post that covers [20 Habits for Successfully Using Nunn Design 2-Part Epoxy Resin](#). Even if you are a seasoned resin mixer, this might be worth a read.

You can also watch a great video on [How to Mix Nunn Design Resin!](#)

STEP 10: (images 13-14)

Place one cup (included in the Nunn Design Resin Kit) onto your table. For curing purposes, it is very important that the resin be an exact 1 to 1 ratio of Part A and Part B. I suggest getting your eyes level with the resin so you can see the lines on the measuring cup.

Pour Part A of your resin kit up to the ½ fluid ounce mark on your measuring cup.

Pour Part B of your resin kit into the same cup until it is filled to the 1 fluid ounce mark. It is important to pour Part A first and then Part B. It is some chemical thing about the part A being heavier or something.

STEP 11: (image 15)

Set your timer for 2 minutes. Using the stir stick from your kit (a popsicle stick or coffee stir stick will work great too), slowly and carefully stir your resin scraping the sides as you stir. Stir for the full 2 minutes. After 2 minutes, scrape both sides of your stir stick on the edge of your resin filled cup.

STEP 12: (images 16-17)

Using a toothpick, drizzle a small amount of the mixed resin over the Crystal Clay and gold flakes until the surface is covered. To create a high dome of resin, continue to drizzle additional resin.

STEP 13:

Let the resin cure for 12 hours. If you had any over pour of resin that is stuck to the sides of the bezel, use a pair of needle nose pliers to gently remove the resin. When the resin is 12 hours into the curing process it is still not fully cured, but this soft cure state makes it really easy to remove the excess resin from the bezel.

STEP 14:

Let pieces cure for the full curing cycle of up to 72 hours.

STEP 15: (image 18)

Add on butterfly clutches and have fun sporting your new Bitsy Earrings with Gold Flakes and Resin!