



How to Make a Wire Frame Pendant with Wire, Rhinestone Chain and Epoxy Clay



We look forward to bringing you exclusive innovations  
and distinctive products this year and beyond.

[www.nunndesign.com](http://www.nunndesign.com)

# Make a Wire Frame Pendant with Wire, Rhinestone Chain and Epoxy Clay

Designer: Becky Nunn

**SUPPLIES NEEDED:**

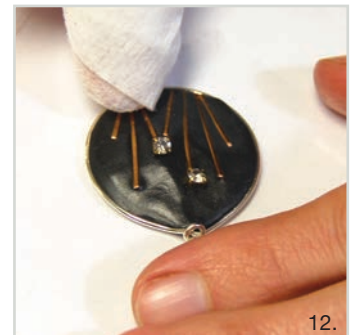
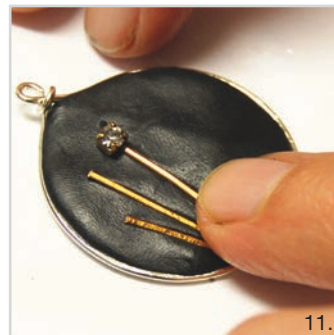
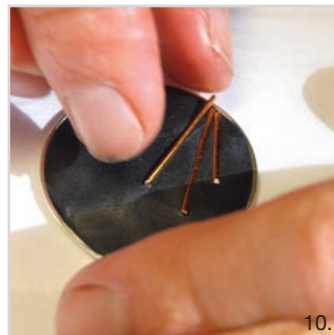
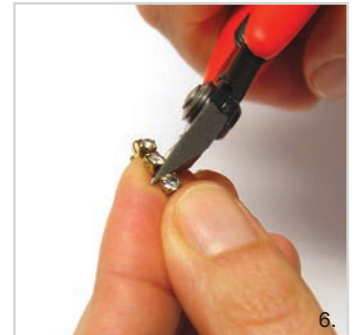
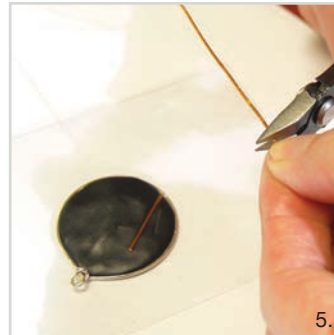
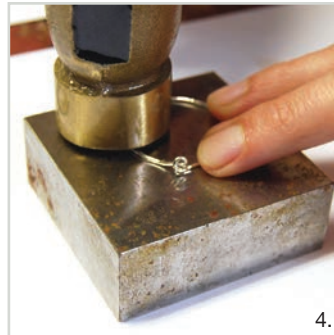
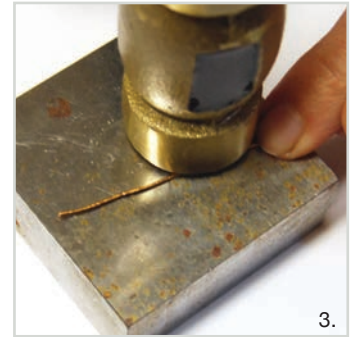
- 1' of 20 Gauge Gold Wire
- 2 - 5 cups of 24pp Rhinestone Chain
- Nunn Design Wire Frame Large Hoop Antique Silver
- Silver
- Crystal Clay Black

**TOOLS NEEDED:**

- Flush Cutters
- Hammer
- Bench Block

**BASIC SUPPLIES:**

- Wet wipes
- Cello Bag or similar item



## Make a Wire Frame Pendant with Wire, Rhinestone Chain and Epoxy Clay

Designer: Becky Nunn



### STEP 1: (Image 3)

Texturize the 20-Gauge Gold Wire. Use flush cutters to cut 1' of 20-gauge gold wire from the spool. Place the wire onto a bench block and hammer the 20-gauge wire until slightly flat and textured.

### STEP 2: (Image 4)

Texturize the Wire Frame Large Hoop (optional). Place the wire frame on a bench block. Begin near the loop and gently hammer around the wire frame – when hammering near the loop go slowly and carefully as you may deform the shape. You may need to use needle nose pliers to reform the shape.

### STEP 3: (Image 5)

Cut the textured 20-gauge wire into various lengths, the longest length being  $\frac{3}{4}$ ".

### STEP 4: (Image 6)

Use flush cutters to cut apart the individual cups of the rhinestone chain. There is a wire between the cups of crystals that retracts the rhinestone chain together, so try to cut that extra little bit of retracting wire off as well. For this pendant I used 3 individual cups of crystals from the rhinestone chain.

### STEP 5: (Image 7)

Follow the manufacturer's instructions for the handling and mixing of the Crystal Clay. While wearing gloves, pinch off two equal grape sized balls of Part A and Part B and blend together fully until the clay is no longer marbled and uniform in color. You have approximately 90-120 minutes of working time before the clay starts to harden, so take your time. Once the clay is thoroughly mixed, remove your gloves to make it easier to work with the clay.

### STEP 6: (Image 8)

Place your hammered wire frame onto a small cell bag or piece of plastic. This will make it easy to pick up once the clay has cured. Roll the clay into a round ball. Flatten the ball into a nice round shape keeping the clay evenly distributed. When the flattened ball is about the same size as the wire frame press it into the wire frame. Another option is to take the rolled ball and simply press it into the wire frame. Press and push the clay to the edges of the wire frame. Ensure that the clay is pressed against the wire frame. Pat the clay smooth.

**TIP:** If you didn't mix up enough of the Crystal Clay, mix another small ball and add it to your wire frame. Pat and blend the clay smooth.

### STEP 7: (Image 9)

Clean any excess clay left on the wire frame or your fingers using a wet wipe or damp cloth. If you wait until the clay is cured it will be nearly impossible to clean it, as the clay is hard as a rock.

### STEP 8: (Image 10)

Time to lay the flattened cut wire from Steps 1-2 into the Crystal Clay filled wire frame. Position the wire into the Crystal Clay with the flattened textured side facing up and flush to one of the edges of the wire frame. Start to create a pattern of various wire lengths to give it a "grass in the garden" like feel.

## Make a Wire Frame Pendant with Wire, Rhinestone Chain and Epoxy Clay

Designer: Becky Nunn



### STEP 9:

If you are not happy with how the pattern is laying out, use a toothpick or a headpin to remove the wire from the clay. If there is a gap or uneven surface area, use your fingers to gently pat down the surface until smooth again. You have 90-120 minutes to work with the clay before it hardens, so you have time to get it just right.

### STEP 10: (Image 11)

Incorporate into your design the cut rhinestone cup chain from Step 3 onto the tops of varying pieces of hammered wire. I like to place the cup chain so that the visible holes from the retractable wire are facing up and down, verses side to side. It makes it easier to hide the holes and just looks neater.

**TIP:** It is really important that the wire and the cup chain be fully embedded into the clay. If it is not, it could easily snag on something and be dislodged.

### STEP 11: (Image 12)

Do a final pass with your wet-wipe to make sure all the clay is off the wire frame. The clay will start to set after 120 minutes and will not longer be embeddable. The pendant will set and be hard to the touch within 4 hours, but the curing process will continue for another 24 hours.