



NUNN DESIGN®

How to Instructions Glass Dome Technique



We look forward to bringing you exclusive innovations
and distinctive products this year and beyond.

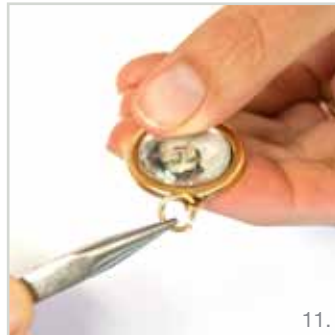
www.nunndesign.com

NUNN DESIGN SUPPLIES:

- 1 Framed Pendant Small Circle Single - Antique Gold (fpccs-gb)
- 1 Patera Glass 22mm Circle (pg22c-b)
- 3 Large Jump Rings-Antique Gold (ljrg-b)
- 1 Small Heart Charm - Antique Gold (shgo-b)
- 18" Small Fine Cable Chain - Antique Gold (sfcc-gb)
- 2 Small Jump Rings - Antique Gold (jrg-b)
- 1 Twig and Connector Set - Antique Gold (ttb-gp)
- Nunn Design Glue

TOOLS NEEDED:

- Paint Brush
- Scissors
- Water (for rinsing paint brush)
- Paper Towel (for drying rinsed paint brush)
- 2 pairs of needle nose pliers



TO ASSEMBLE THE PENDANT

STEP 1: (Image 3)

Select your image. I like to use my glass dome as a guide by sliding it over my artwork.

STEP 2: (Image 5)

On the backside of the glass, paint a thin even coat of Nunn Design Glue. Nunn Design Glue is a silicon-based glue versus a water-based glue. This helps prevent the image from absorbing moisture and potentially running the inks.

STEP 3: (Images 6 & 7)

Press your glass dome to your artwork by squeezing the two between your thumb and forefinger. Slide the two back and forth pressing any excess glue or air out that can be trapped underneath.

STEP 4: (Image 8)

Trim your image with a pair of scissors using the edge of the glass dome as your guide.

STEP 5: (Image 9 & 10)

Paint a thin coat of glue onto the back of the image (now attached to the glass) and press into your bezel.

TO ASSEMBLE THE NECKLACE

STEP 6: (Images 11 & 12)

Using the two pairs of needle nose pliers, open the Large Jump Ring and thread it through the connector hole on the Framed Pendant Small Circle. Repeat for the Small Heart Charm. Thread the Small Textured Cable Chain through the jump rings attaching the pendant and heart charm onto the chain.

STEP 7: (Image 13)

On each end of the Small Textured Cable Chain, attach a Small Gold Jump Ring and the Twig Connector Bar. On the other end of the Small Textured Cable Chain, attach a Small Gold Jump Ring and the Round Connector Ring.



Yahoo! How cool is that!

MAKE THIS TOO!

Complete your jewelry accessories with alternative projects using the same technique!

Bracelet

Large Loop Cable Chain - Gold (llcc-gb)

Framed Pendant Small Circle Single - Gold (fpscs-gb)

Patera Glass 22mm Circle (pg22c-b)

Small Heart Charm - Gold (shgo-b)

Twig and Connector Set - Gold (ttb-gp)

Large Jump Rings - Gold (ljrg-b)