



How to Instructions For Black Chaton Gold Bezel Earrings



We look forward to bringing you exclusive innovations
and distinctive products this year and beyond.

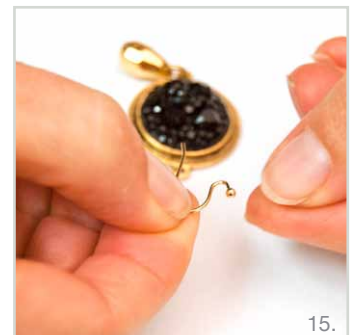
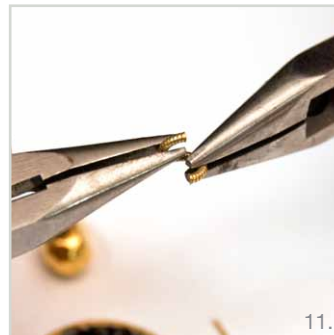
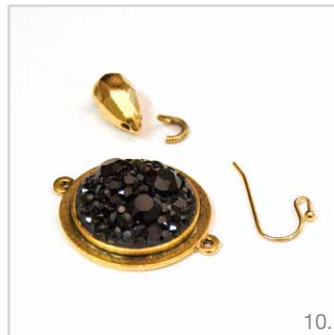
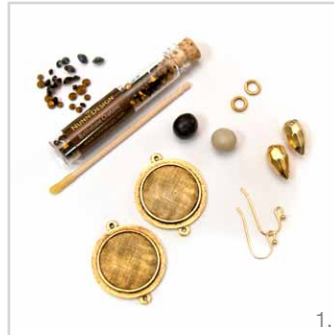
www.nunndesign.com

NUNN DESIGN SUPPLIES:

- Crystal Clay-Black (cryclay-black)
- Cha-blk Chaton Black (cha-blk)
- 2 Raised Pendant Small Circle Double Loop - Antique Gold Plated (rpsc-gb)
- 2 Ear Wires - Antique Gold Plated (ewg-b)
- 2 Jump Ring 6mm Textured Circle - Antique Gold Plated (jr6tc-gb)
- 2 Metal Bead Faceted Drop - Antique Gold Plated (mbfd-gb)

TOOLS NEEDED:

- Beeswax Toothpick or Magic Pick Lite
- 2 pairs of needle nose pliers
- Wet wipes
- Toothpick or a headpin





TO ASSEMBLE THE BEZELS

STEP 1: (Images 2-3)

Pinch off two equal pea-sized balls, one of Part A (the color) and another of Part B (the hardener) of the Crystal Clay. Knead the two equal-sized balls fully together until the clay is a consistent color and not marbled.

STEP 2: (Image 4)

Split the mixed Crystal Clay in half and roll one half into a ball and press it into the base of the Raised Pendant Small Circle Double Loop - Antique Gold Plated. Pat the clay gently until it is flat and fully flush to the edge. If you have too much Crystal Clay, you can pinch off the excess and keep patting it down to make the surface smooth. Repeat with the other half of clay in the other Raised Pendant. Make sure to use your wet wipe and clean up any excess Crystal Clay that could be on the sides of the metal or on your fingers. The Crystal Clay will dry rock hard and is super hard to remove, so get in the practice of always keeping your work surface clean and tidy.

STEP 3: (Image 5-7)

Using a beeswax toothpick or a Magic Pick Lite, pick-up the individual Black Chatons and gently press each into the Crystal Clay. Continue to press Chatons in until complete. You have approximately 2 hours to work with the Crystal Clay, so take your time and enjoy.

NOTE: To create the stair step look of layering the Chatons, pinch off a very small ball of clay and press it gently into the gaps between the various sizes of the Chatons using a headpin. This allows for a bit of clay to be built up so the additional Chatons have plenty of clay to be pressed into. Wipe away the excess Crystal Clay if it spread out onto the surrounding Chatons.

STEP 5: (Image 8-9v)

Use your fingers to gently press the Chatons into the clay, making sure that all of the

Chaton points are secure and embedded fully into the clay. Wipe away any excess Black Crystal Clay. It will dry rock hard and is super hard to remove. The Crystal Clay will harden within 2 hours and fully cure within 24.

TO ASSEMBLE EARRINGS

STEP 1: (Image 10-14)

Using two pairs of needle nose pliers, open the 6mm Textured Jump Ring. Thread through the Raised Pendant Small Circle Double Loop - Antique Gold Plated and the Metal Bead Faceted Drop - Antique Gold Plated. Close jump ring. Repeat for other earring.

STEP 2: (Image 15-18)

Open the Ear Wire and thread through the Raised Pendant Small Circle other loop. Squeeze closed. Repeat for other earring.

Ahhh! Time to take out the mirror and admire your new creations!