

CREATE A TEXTURIZED CRYSTAL CLAY PENDANT WITH RIBBON ENDS



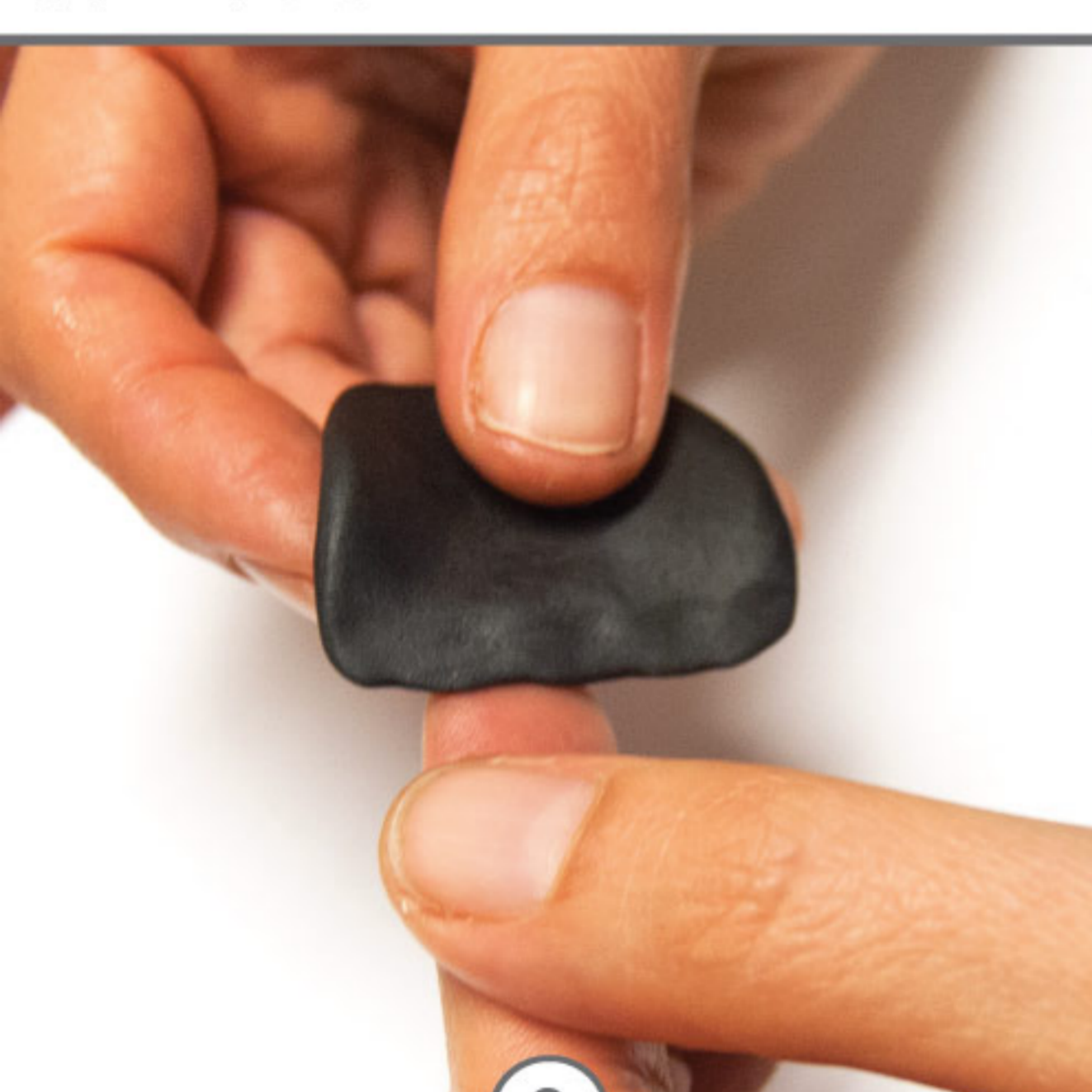
1

Use needle nose pliers to open center channel in a Ribbon End. Poke needle nose pliers into gap and pry open the Ribbon End even wider.



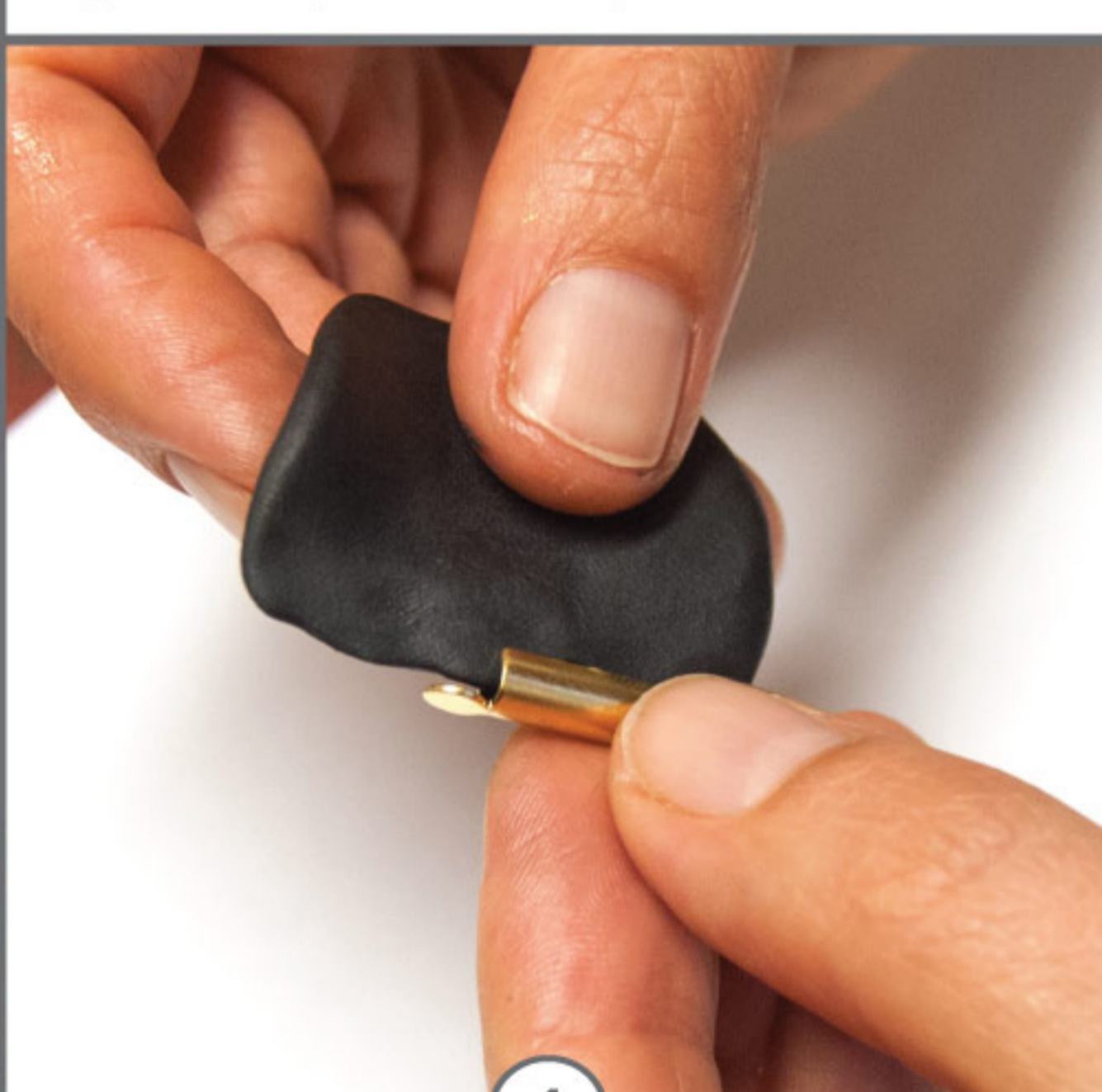
2

While wearing gloves, pinch off two equal blueberry sized balls of Part A and B. Blend together fully until the clay is uniform in color.



3

Roll Crystal Clay into ball. Once your ball is nice and smooth, start to shape it into a flat patty with your fingers.



4

Insert the Crystal Clay patty into open end of Ribbon End. Slide clay down center channel until flush side-to-side with the full length.



5

Pinch off any excess Crystal Clay and continue to shape the clay with your fingertips until you have the shape that you want.



6

Select Clay Squisher design of choice. Use a Q-Tip to apply some PearlEx Mica Powders to the surface of the Clay Squisher.



7

Place one Clay Squisher design face up onto edge of work surface. Place your piece on Clay Squisher with the Ribbon End part hanging off.



8

Place another design of the Clay Squisher onto the top of the Crystal Clay, making a sandwich.



9

Press evenly on the Clay Squisher sandwich. Peel away the Clay Squishers from the front and back to inspect impression results.



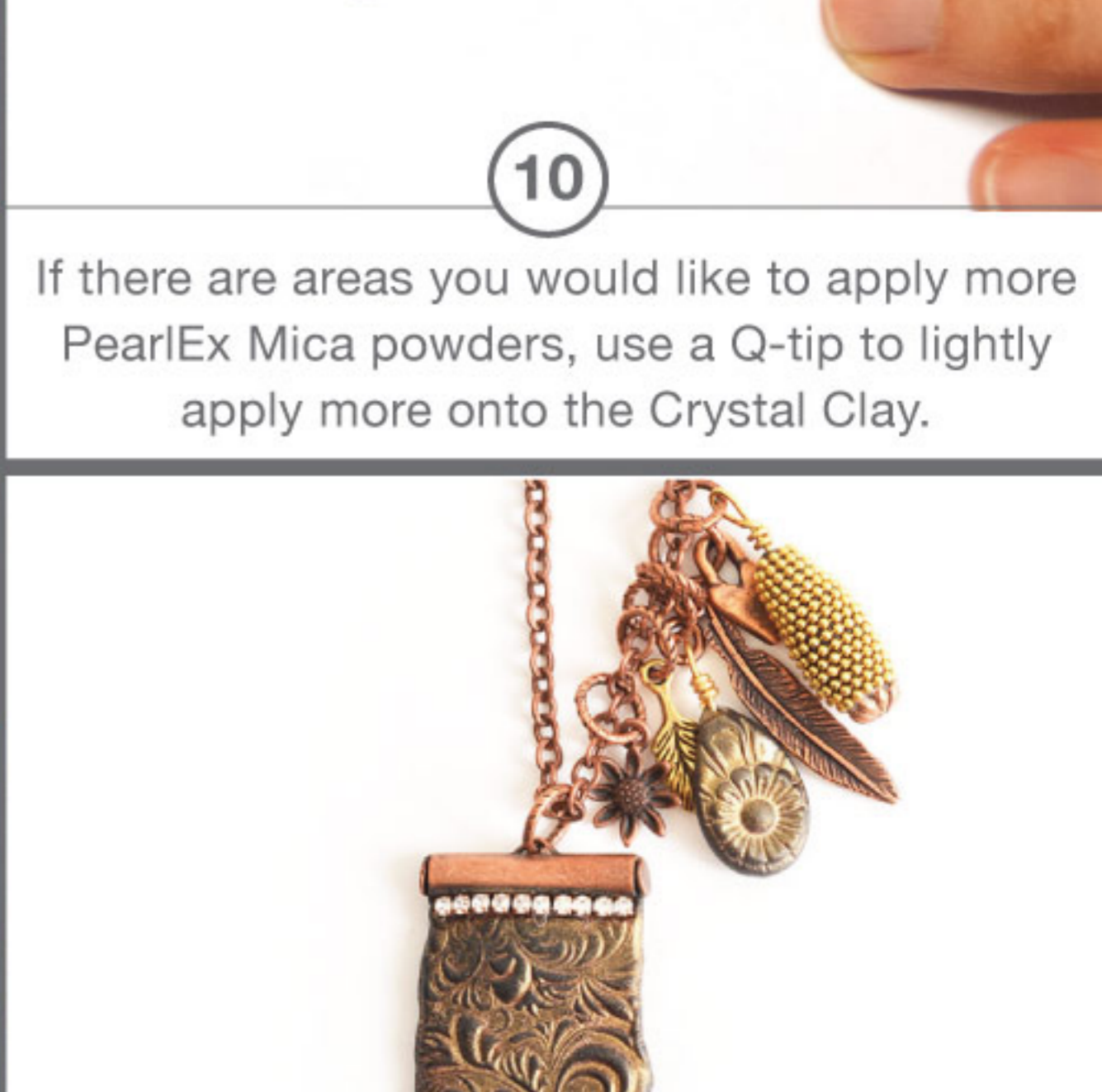
10

If there are areas you would like to apply more PearlEx Mica powders, use a Q-tip to lightly apply more onto the Crystal Clay.



11

Measure and cut a piece of Rhinestone Cup Chain. Lay along top edge of Clay, press gently to embed. Poke holes if dangling items.



12

Once pendant is cured, use needle nose pliers to slightly bend down the open Ribbon end. Use edge of table to press completely closed.