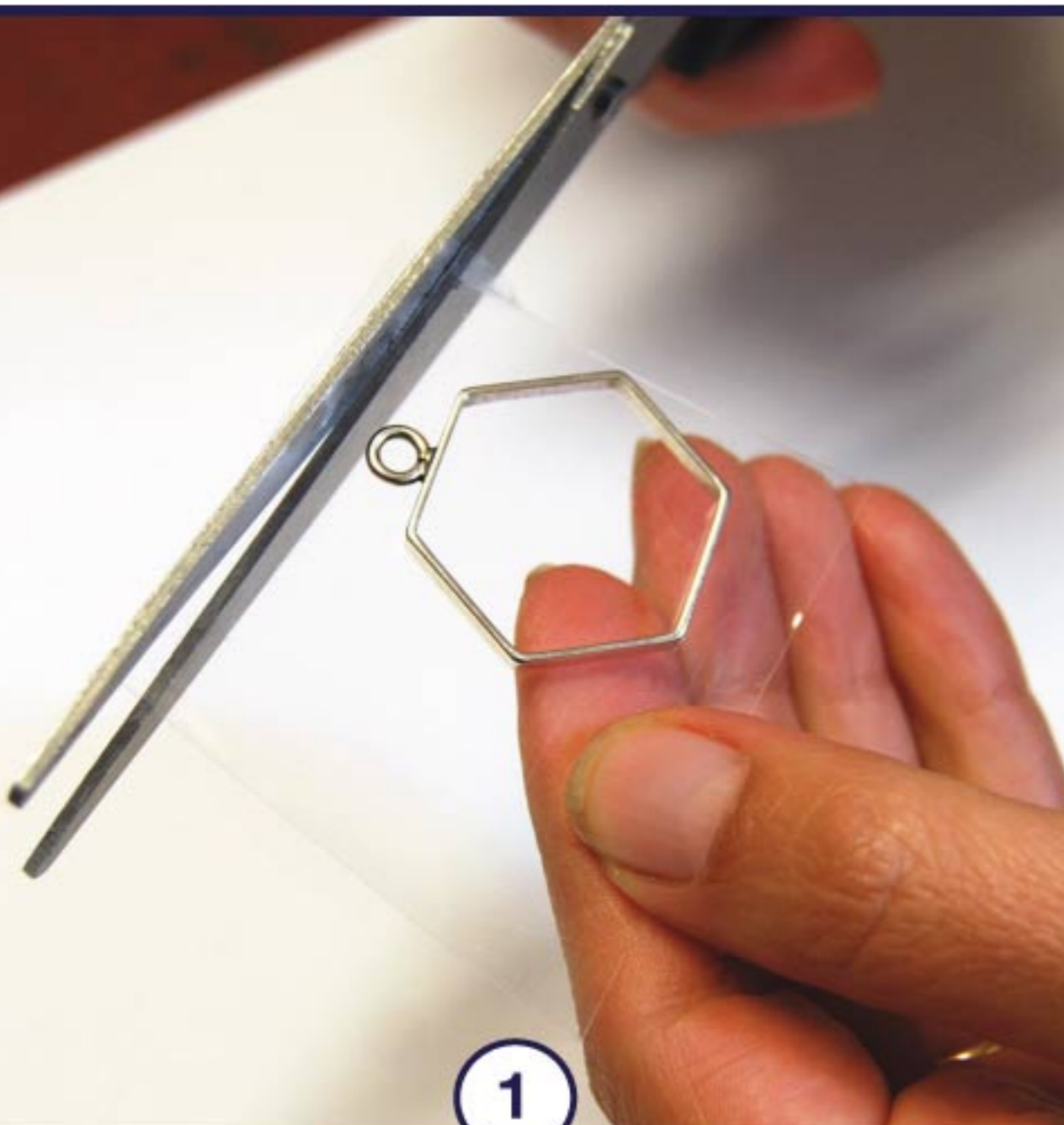
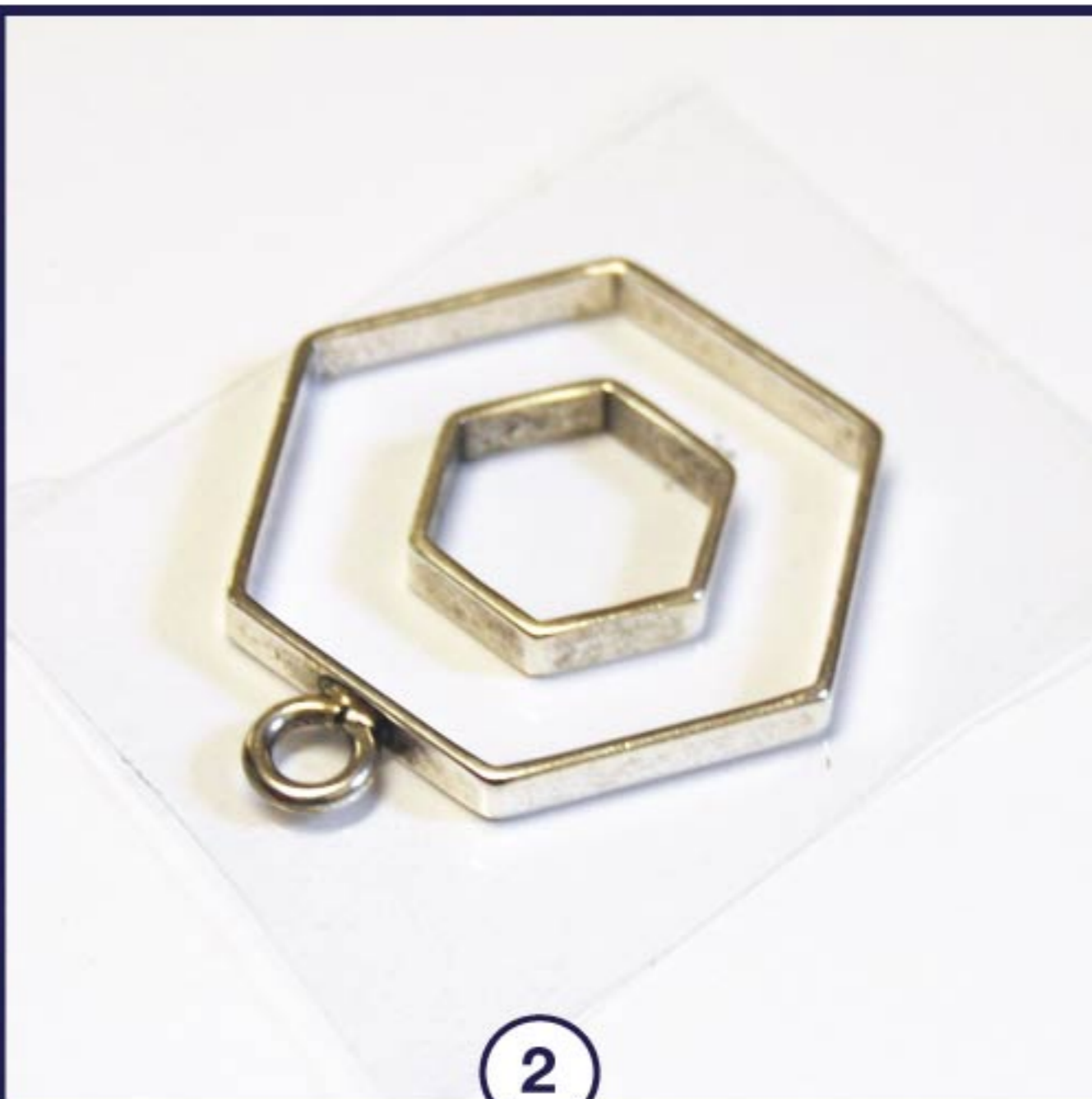


OPEN FRAME BEZELS WITH COLORIZED RESIN



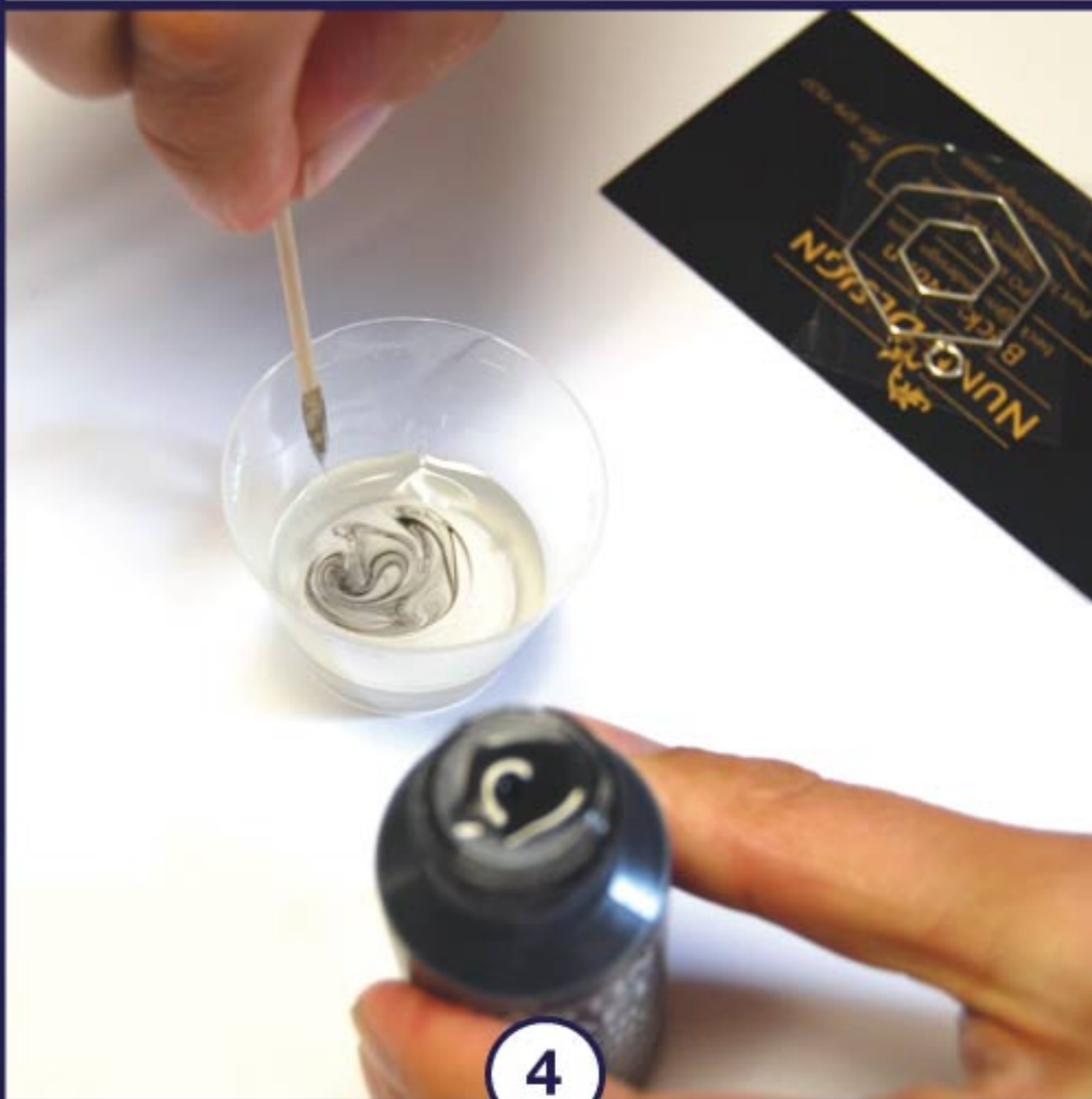
1 Place your Open Frame or Open Bezel onto packing tape. Trim away excess. Rub bezel back and forth to burnish to tape.



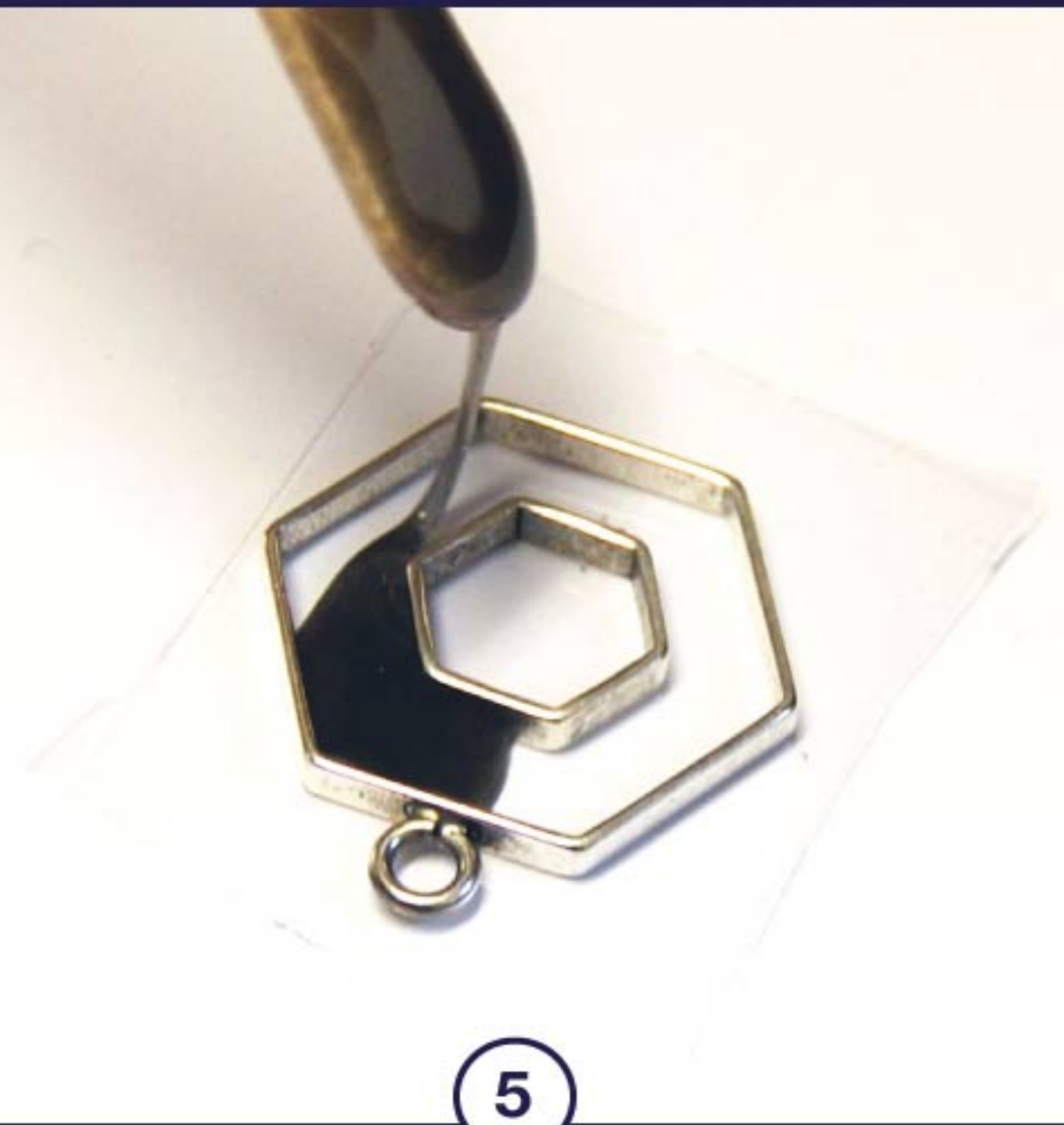
2 Cut the loop off and place the smaller Open Frame in the center of your large Open Frame. Press into packing tape.



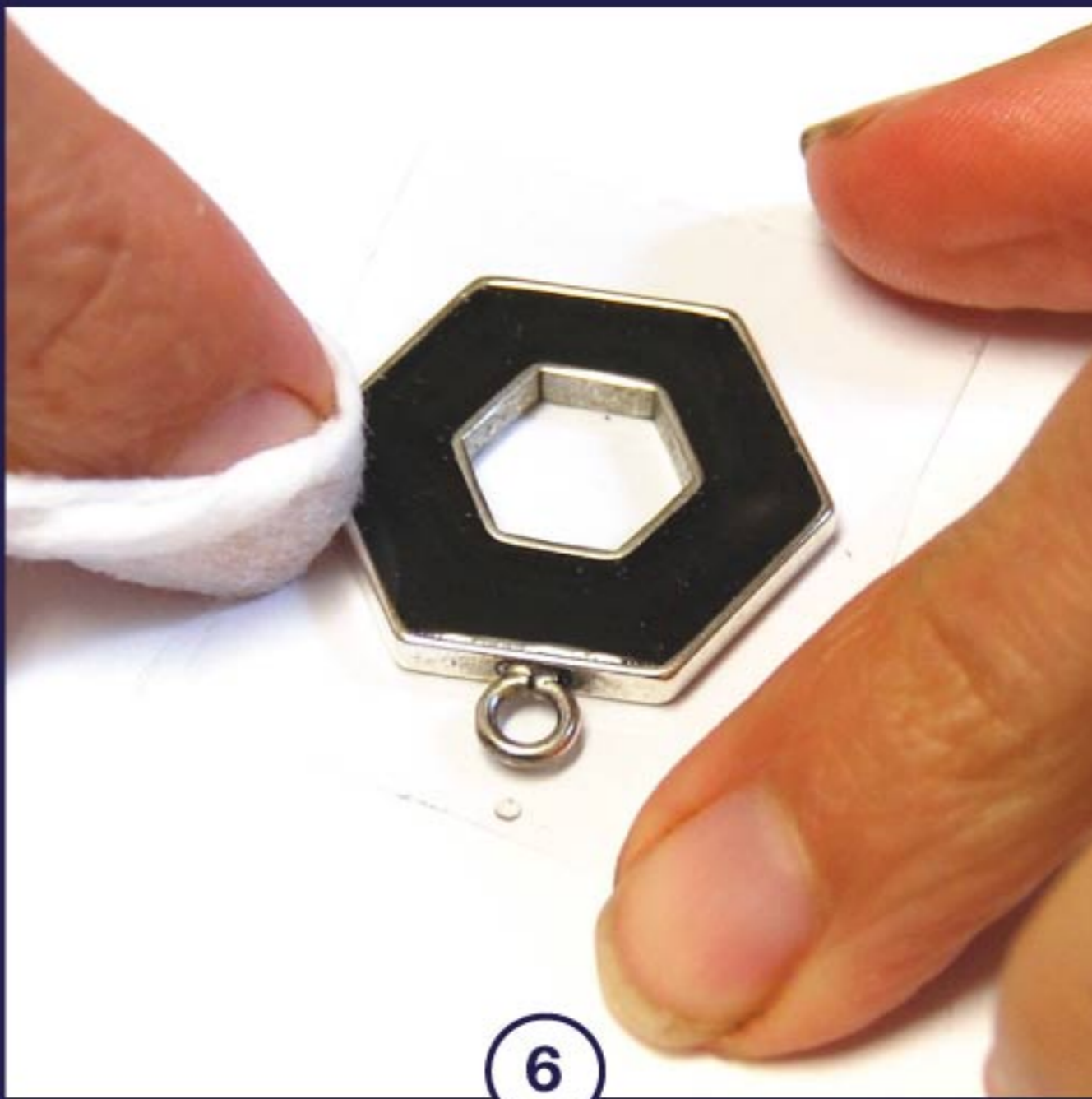
3 Pour equal parts of A, then B, of Nunn Design 2-Part Resin into cup, mix for 2 minutes and put under lamp for 5 min.



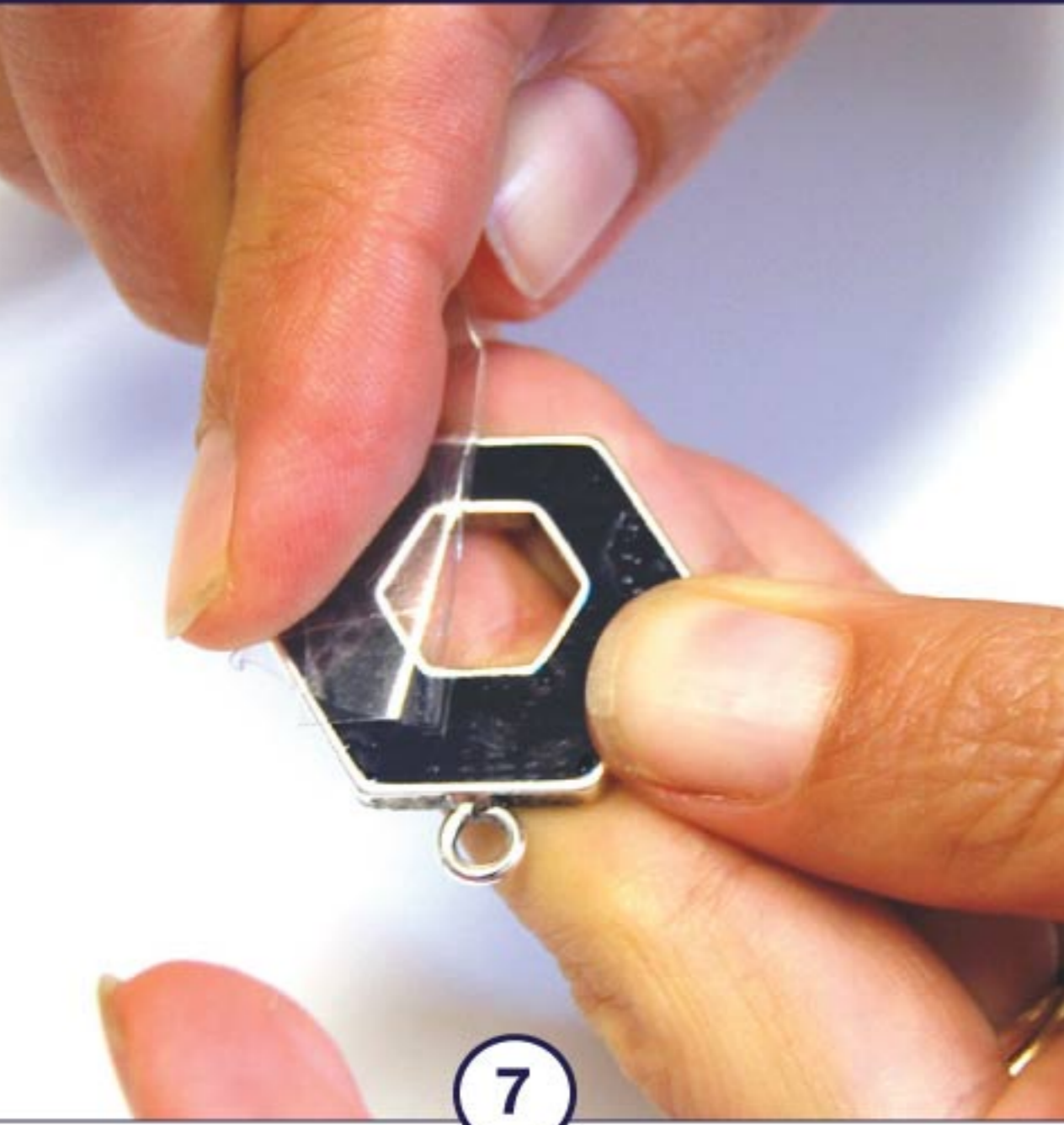
4 Pour small amount in new cup, add in toothpick tip of Colorant of your choice. Add more colorant to make more opaque. Stir.



5 Slowly drizzle resin into the channel until partially full. Move resin around with toothpick to check for bubbles. Fill rest of way.



6 If you have any resin where you don't want it, use a wet-wipe to clean up the surface. Set aside to cure (up to 72 hours)



7 Remove packing tape. If there is residue, keep touching tape to onto sticky surface until no longer sticky.



8 If you are making a pair of earrings, add on that ear wire and you are good for a night out!