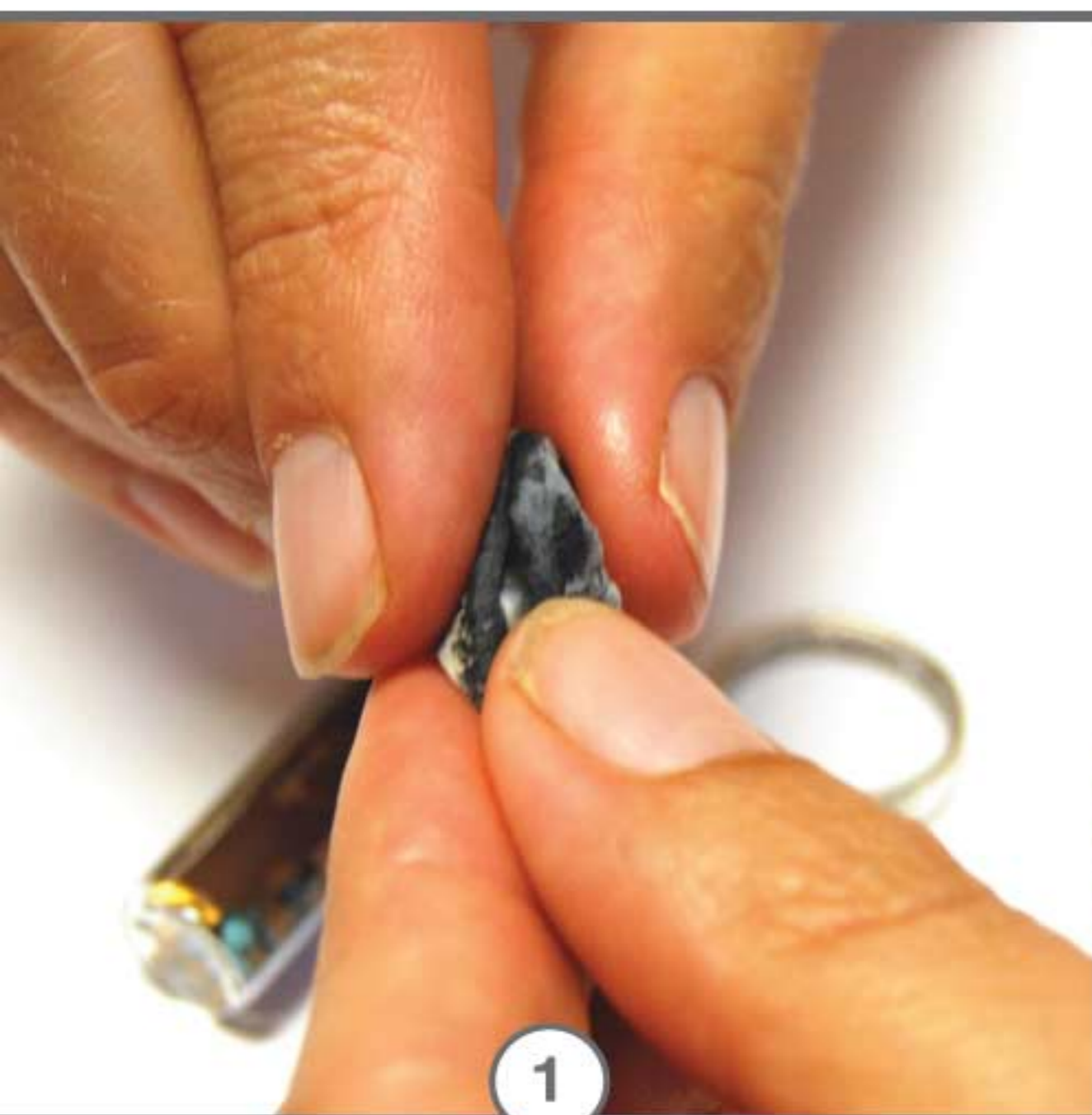


MAKE AN ITSY BEZEL RING WITH EPOXY CLAY, BALL CHAIN AND A CHATON



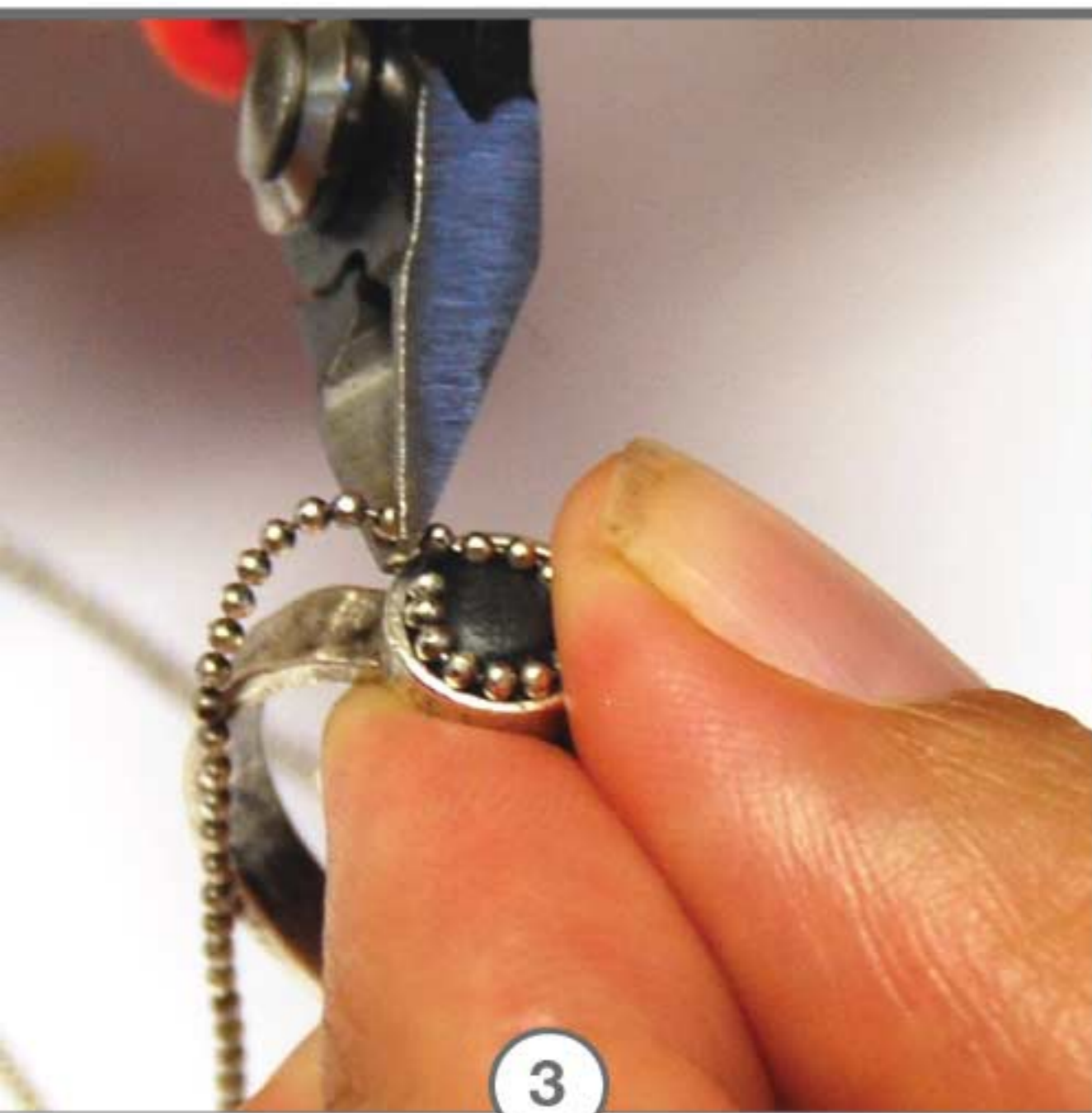
1

Mix up Crystal Clay: Pinch off equal sized balls Part A and Part B and blend together fully until the clay is no longer marbled.



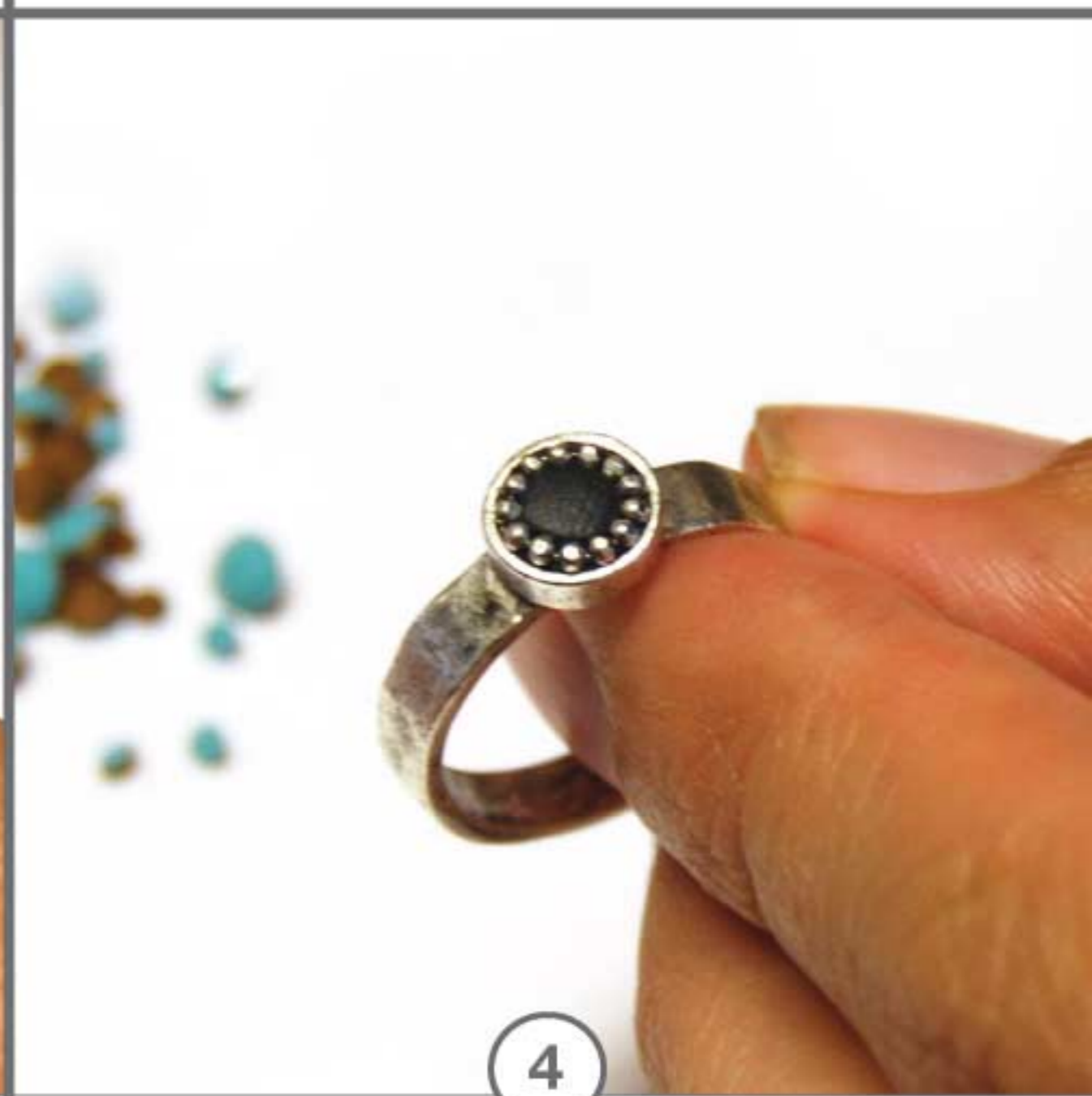
2

Pinch off a lenti sized ball, roll in the palm of your hand until smooth, place into bezel and pat down creating flat surface.



3

Wrap Faceted Bead Chain Fine around the outside edge. Using Flush Cutters, trim away excess where chain begins to overlap.



4

Gently press the Faceted Bead Chain Fine down into the bezel - making sure it is fully embedded to the Crystal Clay.



5

Using a beeswax toothpick (included with Crystal Clay), place a 20ss Turquoise Chaton into the center. Press down gently to embed.



6

Gently wipe down your piece with a wet-wipe and you are done!