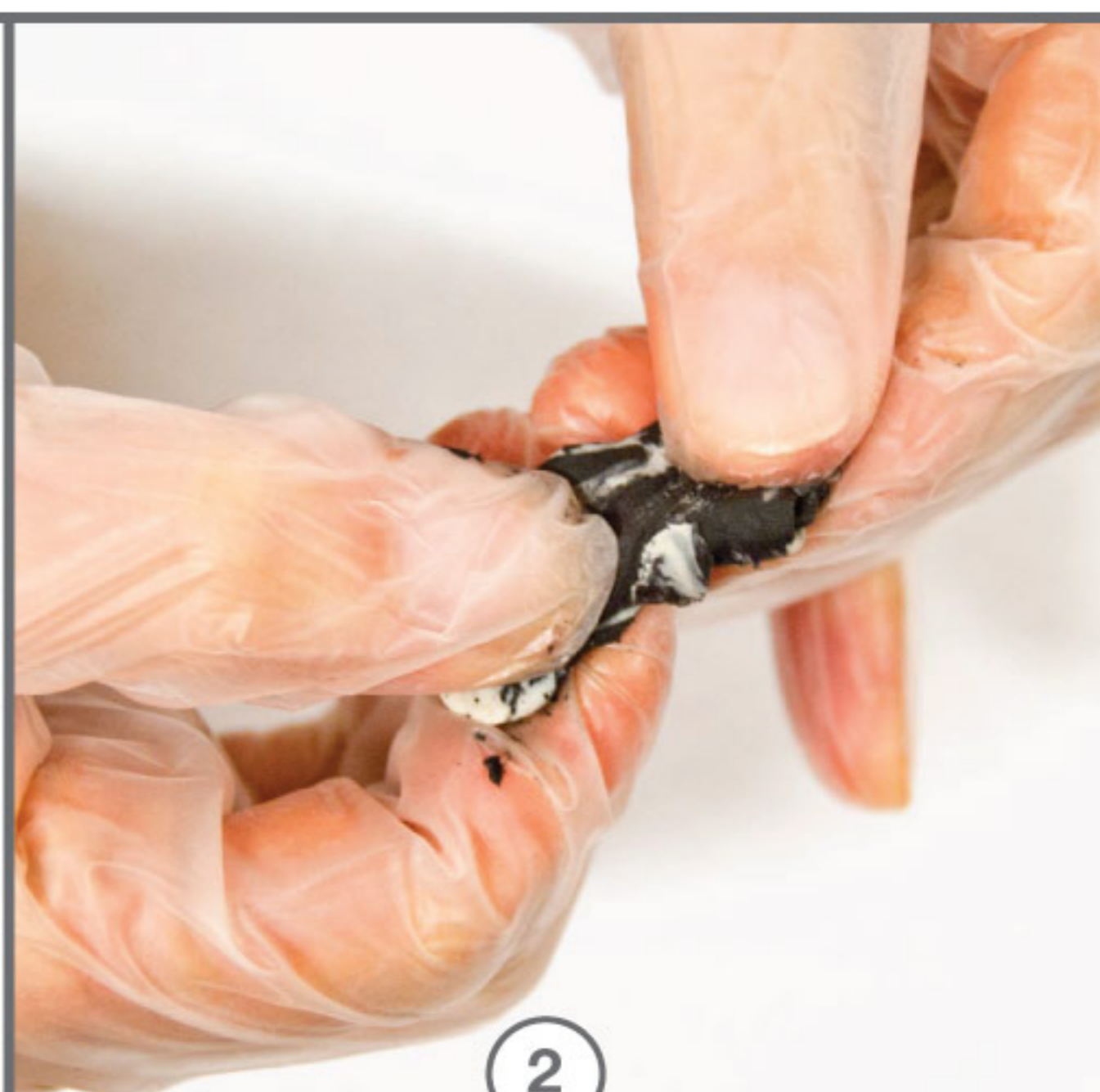


CREATE UNIQUE JEWELRY BY  
EMBEDDING STONES IN EPOXY CLAY



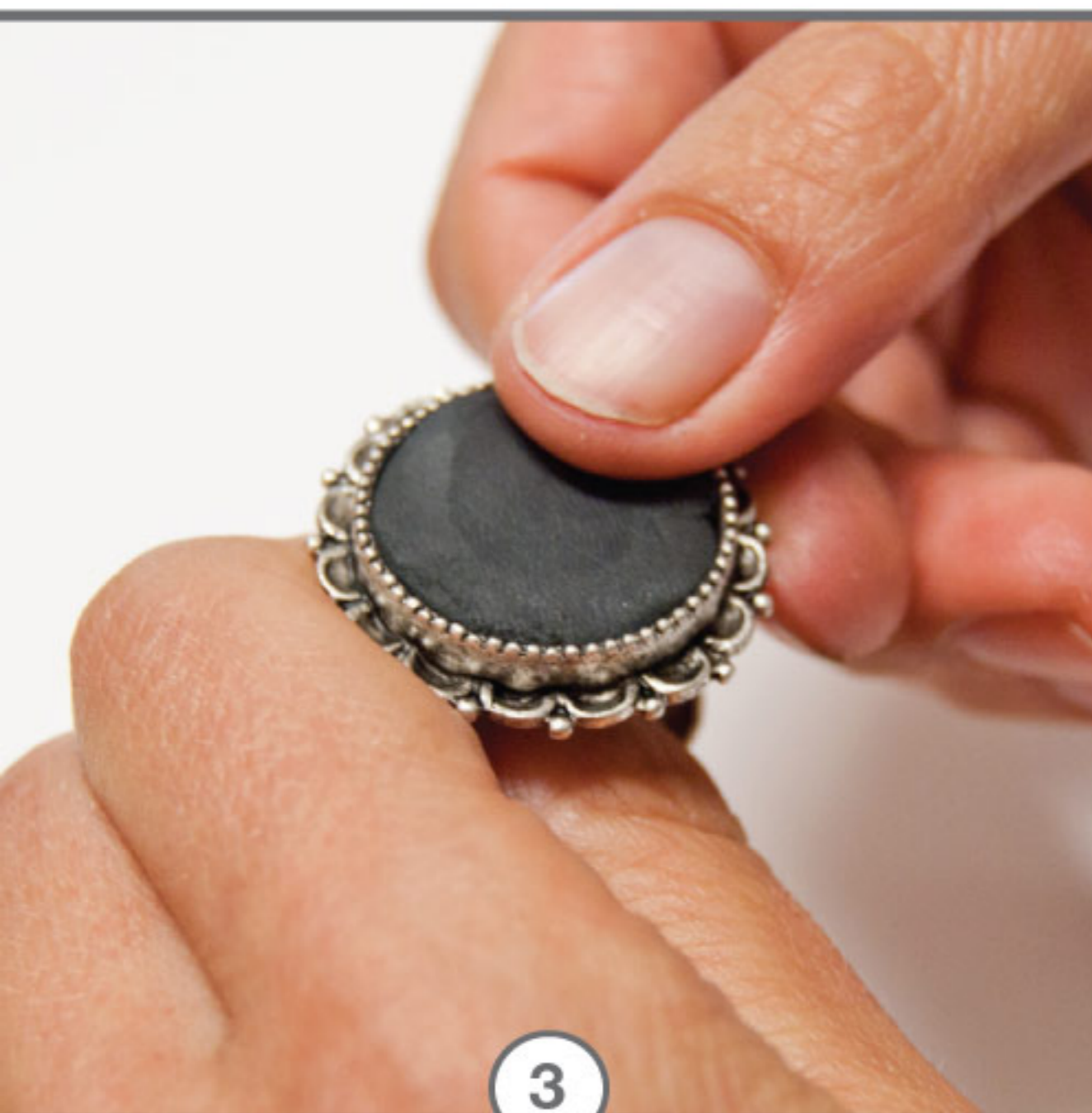
1

Follow manufacturer's instructions for handling and mixing Crystal Clay. While wearing gloves, pinch off equal sized balls of Part A and B.



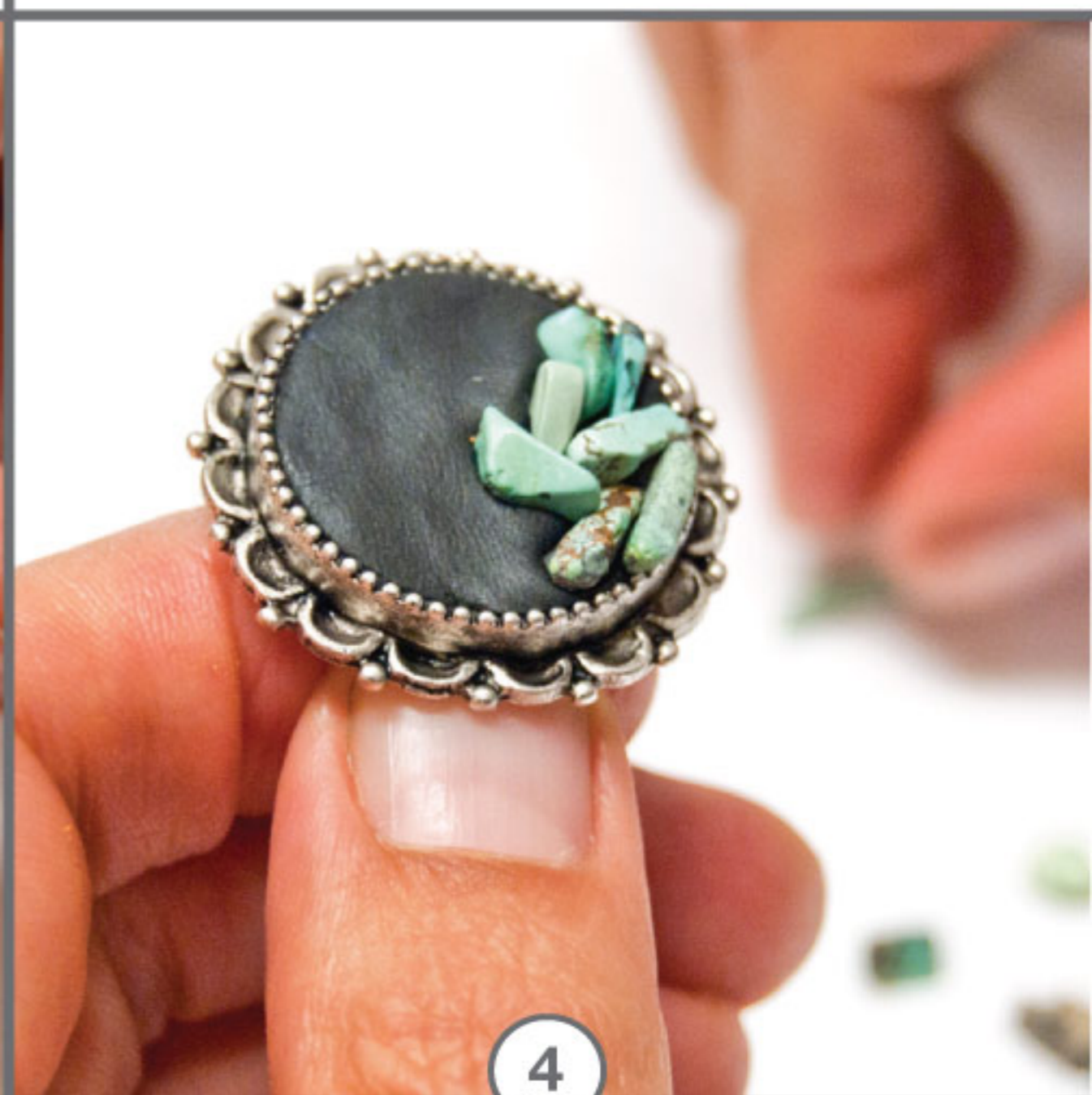
2

Blend clay until uniform in color. You have approx 2 hrs working time before it starts to harden, so take your time. Roll into a ball.



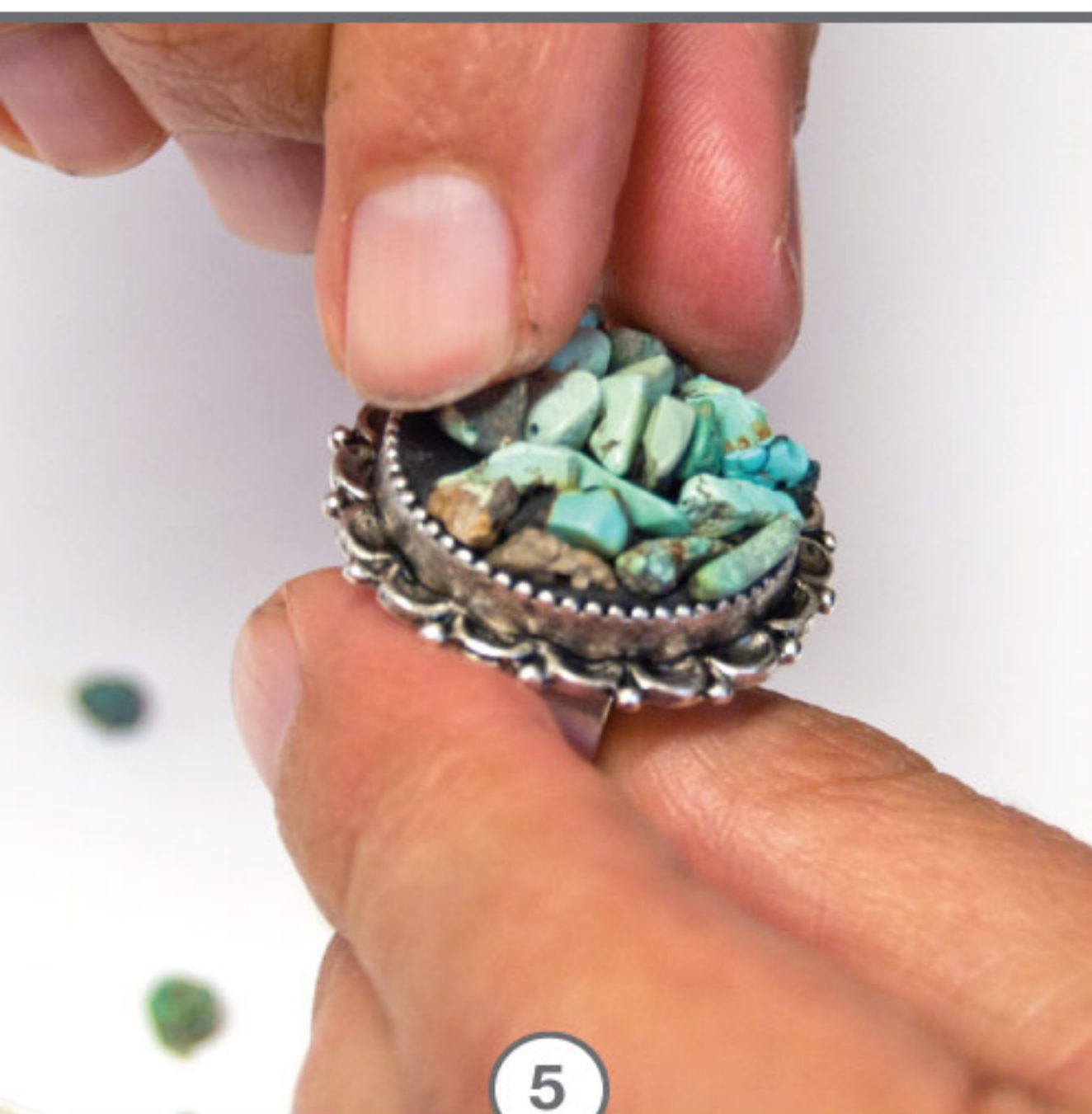
3

Press the ball into the bezel and create an even coverage by patting down the clay with your fingers, less than level with sidewalls.



4

Using your fingers, pick-up and place the individual Chip Beads into the clay.



5

Once all of the Chip Beads are in position, use your fingers to gently press the stones into the Crystal Clay, so they are embedded.



6

Gently wipe away any excess Crystal Clay. It will be super hard to remove once cured. It hardens within 2 hours and fully cures in 24.