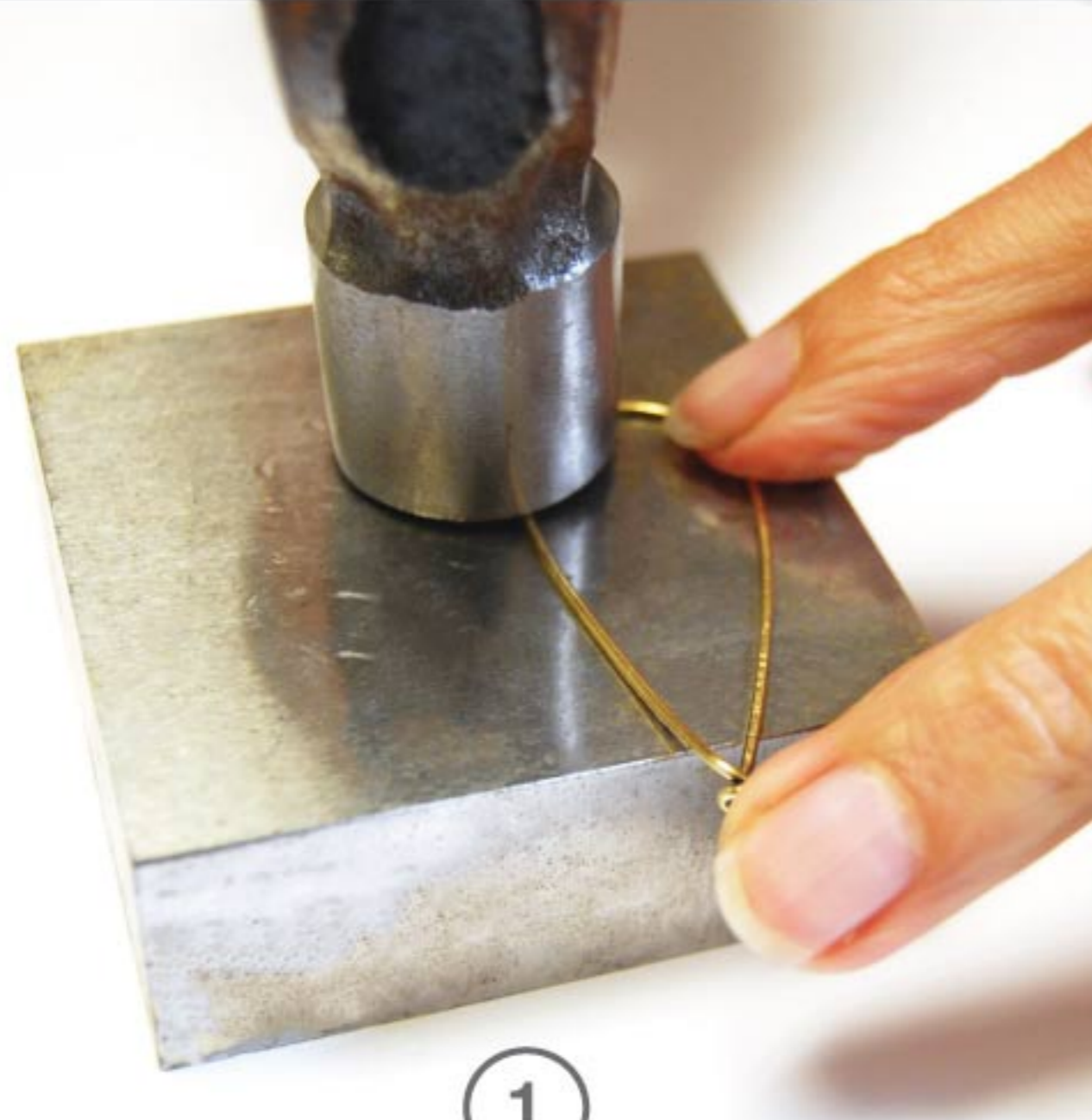




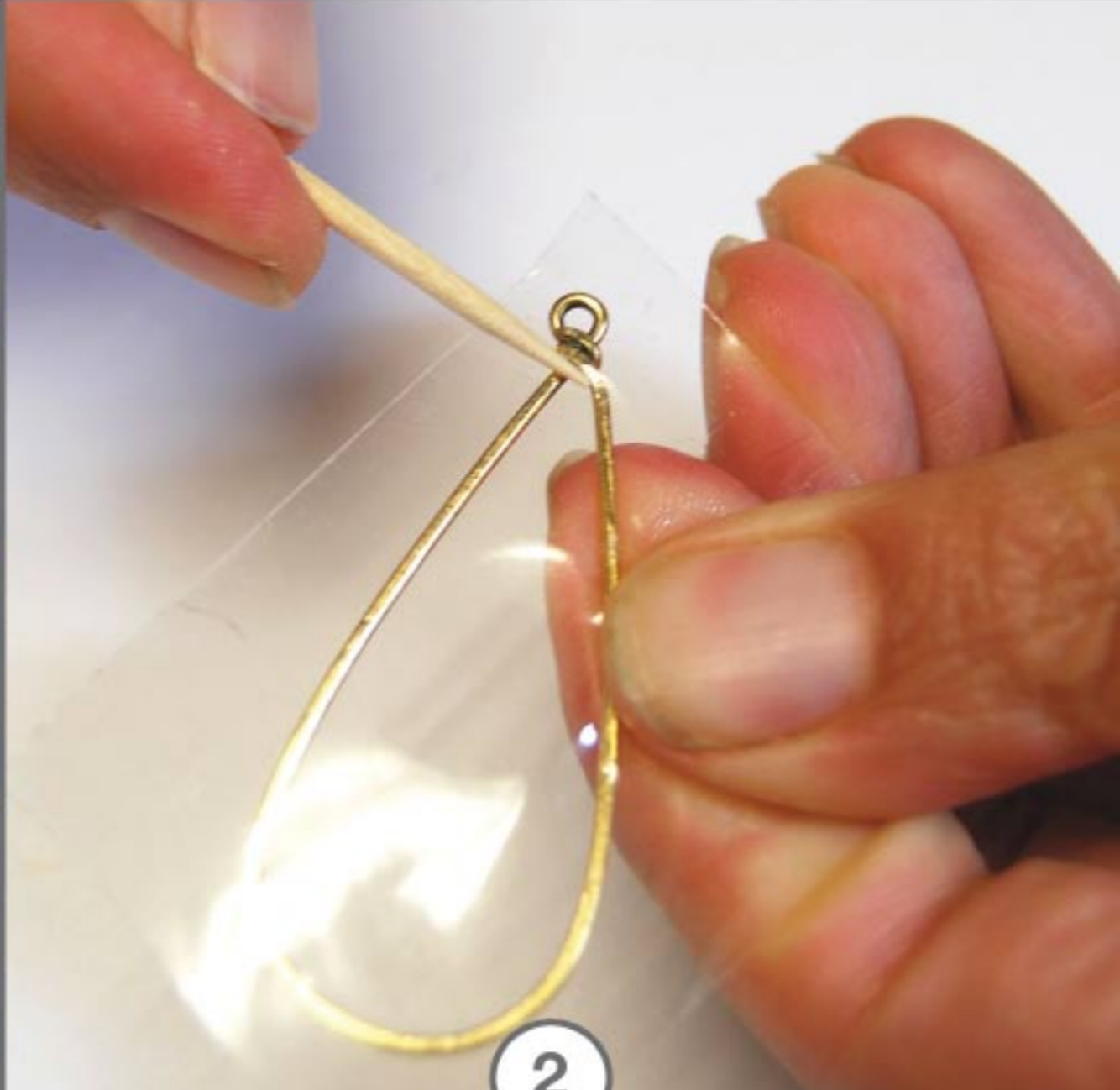
NUNN DESIGN®

CREATE RESIN FILLED PENDANTS IN WIRE FRAMES



1

The Wire Frame Large Drop doesn't lay flat. To create a flat surface use a hammer and bench block to slightly flatten the wire.



2

Place Wire Frame on piece of packing tape, press down. Check that all edges are in full contact with the packing tape.



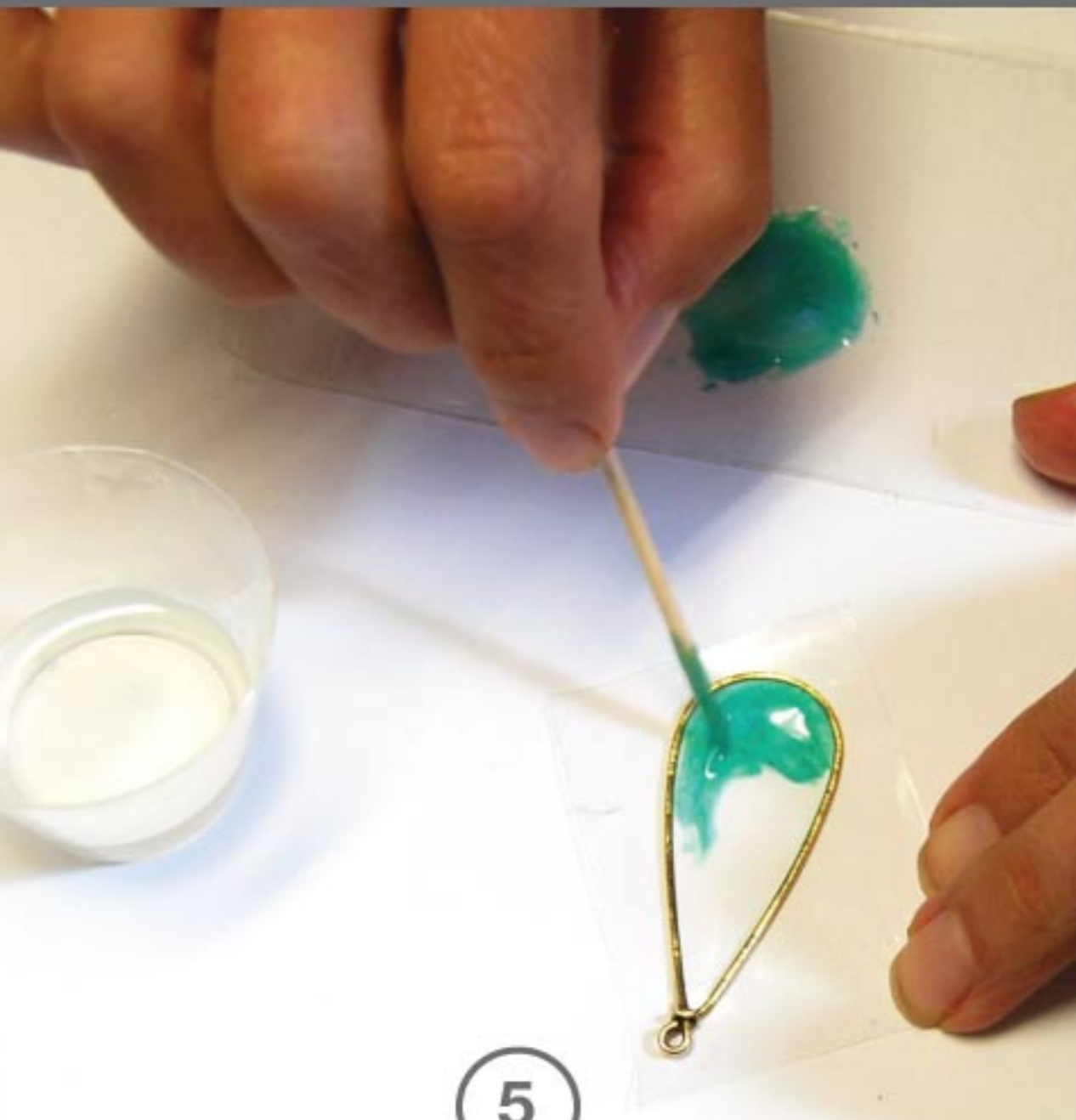
3

Pour equal parts of A, then B, of Nunn Design 2-Part Resin into cup, mix for 2 minutes and put under lamp for 5 min.



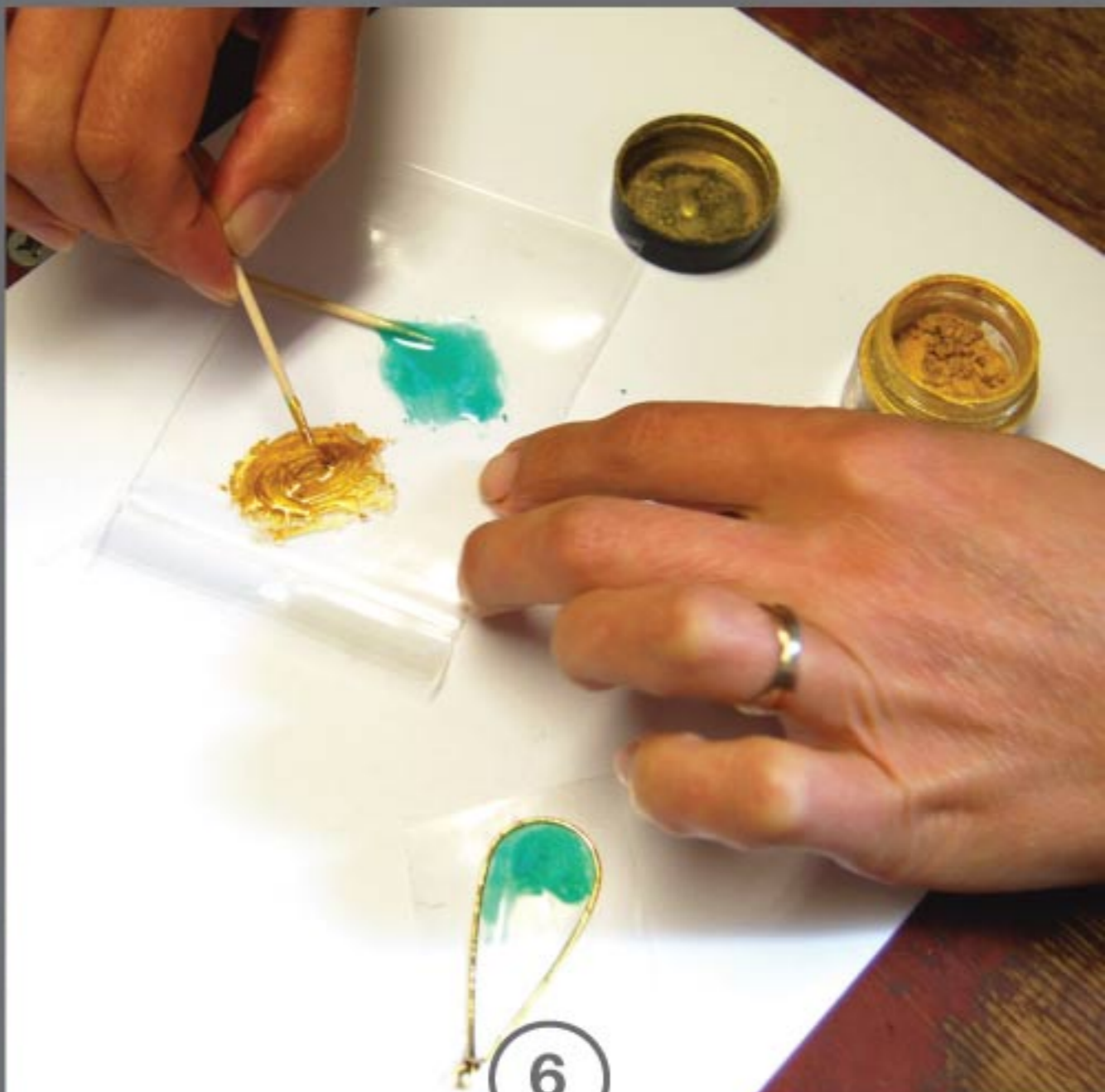
4

Slowly pour mixed resin into Wire Frame. Use a toothpick to move resin to the edges.



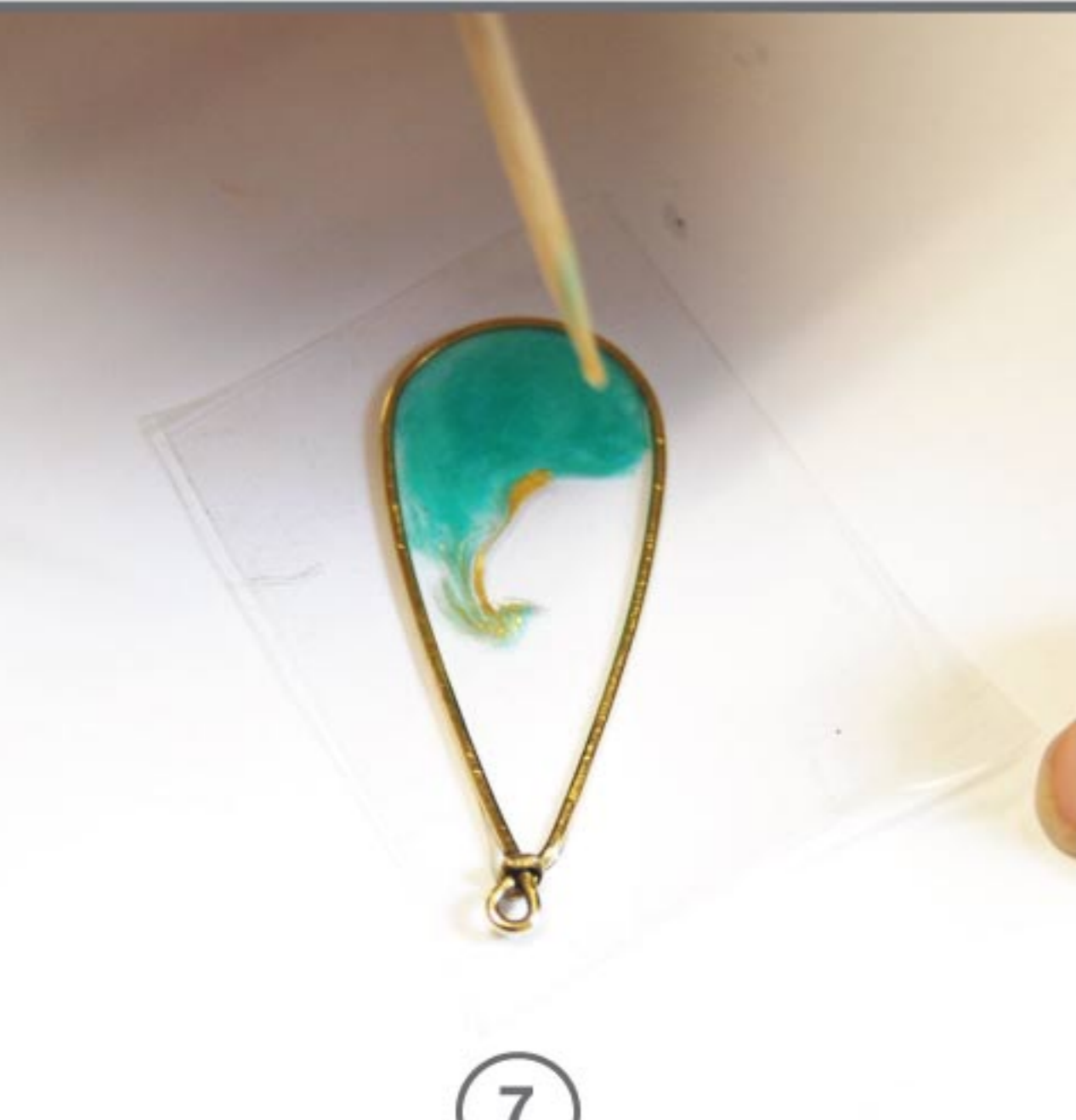
5

To add color to your piece, you can sprinkle in some PearlEx Mica Powder into the resin and then blend it together with a toothpick.



6

You can also mix the mica powders into resin on the side and then add it to the Wire Frame. (Technique that is shown.)



7

Let the Wire Frame pieces dry until cured (up to 12 hours)



8

Remove packing tape. If there is residue, keep touching tape to onto sticky surface until no longer sticky.