



NUNN DESIGN®

How to Instructions For "Make This" Mum Flower Ring



We look forward to bringing you exclusive innovations
and distinctive products this year and beyond.

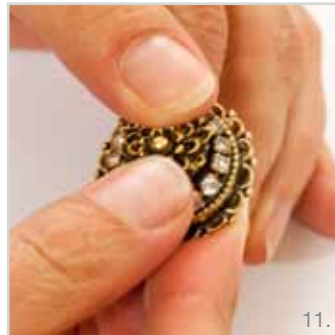
www.nunndesign.com

NUNN DESIGN SUPPLIES:

- Ring Adjustable Ornate Large Circle - Antique Gold (raolc-gb)
- Rhinestone Chain 18ss - Antique Gold (rc18-gb)
- Mum Flower Charm - Antique Gold (mfcg-b)
- Crystal Clay Black (cryclay-black)

TOOLS NEEDED:

- 1 Pair of cutting pliers
- Ruler



How to Instructions For "Make This" Mum Flower Ring

STEP 1: (Images 1-3)

Pinch off two equal small pea size balls, of Part A (the color) and Part B (the hardener). Knead the two equal size balls fully together until the clay is a consistent color and not marbled.

STEP 2: (Image 4)

Pinch off a lentil bean size ball of the mixed clay to use later in the center under the Mum Flower Charm.

STEP 3: (Image 5)

With the remaining mixed clay, roll it into a round ball. Pat the clay gently into the Ornate Large Circle Ring until it is flat and fully flushed to the edges. The clay should be just along the base of the ring bezel.

STEP 4: (Image 6)

Cut a 2 $\frac{3}{4}$ " piece of the 18ss rhinestone chain.

STEP 5: (Images 7 & 8)

Place the rhinestone chain around the inside edge of the Ornate Large Circle Ring. Tap down slightly, pressing the chain into the clay.

STEP 6: (Image 9)

Using a pair of cutting pliers, cut off the loop from the Mum Flower Charm.

STEP 7: (Image 10)

With the lentil sized ball set aside in step 2, press it into the center of the ring.

STEP 8: (Image 11)

Press the Mum Flower Charm into the center.

STEP 9: (no image)

Ring will cure in 12-14 hours.

Give yourself a manicure because EVERYONE is going to notice your newest bauble!