

NUNN DESIGN SUPPLIES:

SHOP:

[Buy & Try Earring Post Bar Large and Small with Crystal Clay and Gilding Flakes](#)

SHOP WHOLESALE:

[Buy & Try Earring Post Bar Large and Small with Crystal Clay and Gilding Flakes](#)

[Nunn Design Earring Post Bar Large \(epbl\)](#)

[Nunn Design Earring Post Bar Small \(epbs\)](#)

[Crystal Clay-Black](#)

[Gilding Flakes](#)

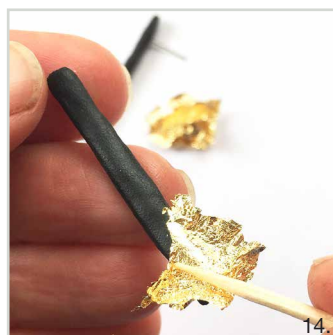
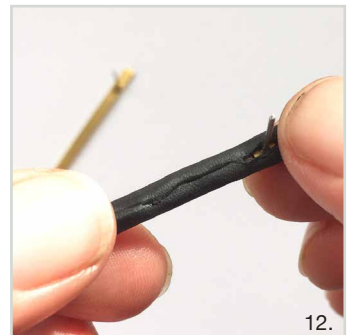
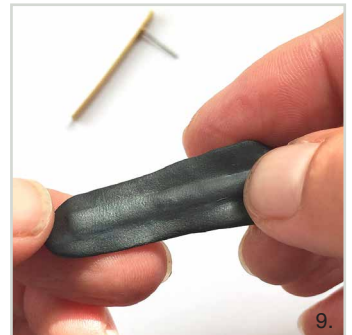
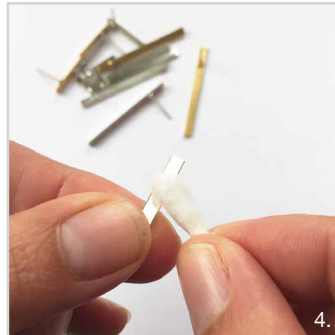


OTHER SUPPLIES:

- Rubbing Alcohol
- Q-Tips
- Wet-wipes
- Toothpicks
- Business Cards or glossy card stock

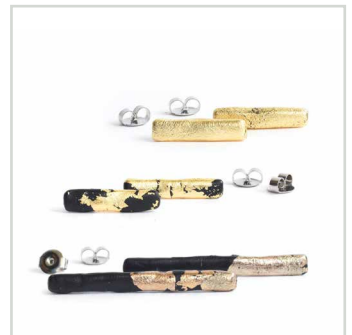
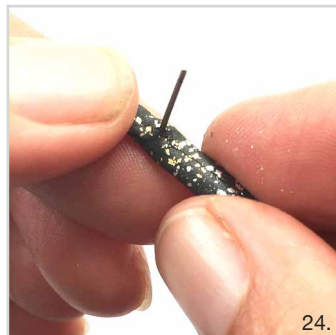
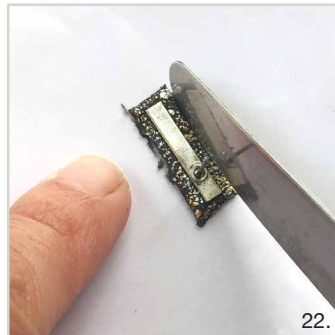
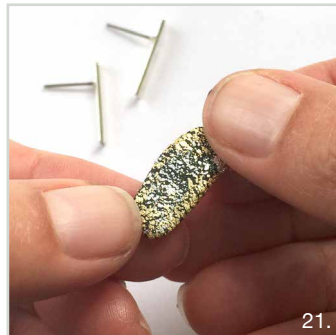
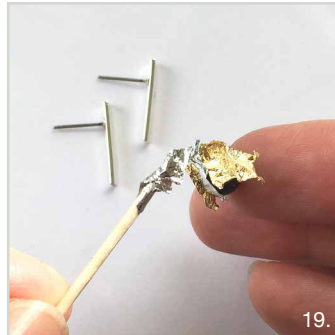
LEARN MORE:

[Read the full written tutorial.](#)



Make These Earring Post Bar Earrings with Crystal Clay and Gilding Flakes

Designer: Becky Nunn



This tutorial features Nunn Design Bar Earrings Small and Large. They are 20-gauge solid brass. The Small Bar is 3mm wide and 19mm in length and the Large Bar is 3mm wide and 38mm in length. A surgical steel post is soldered onto the back with lead-free solder. A sleeve is applied over the surgical steel post and then plated using nickel-free 24k gold and .999 fine silver. A final phase of oxidization is applied to provide an aged look to the plating. This product is made in the USA.

Here is a tutorial walking you through how to create this look using the bar earrings!

Make These Earring Post Bar Earrings with Crystal Clay and Gilding Flakes

Designer: Becky Nunn



STEP 1: (Images 2-4)

The Nunn Design Findings are oxidized to provide the antique look to the precious metal plating. The oxidization, when it comes into contact with the Crystal Clay could change the color of the clay. To avoid this, clean the findings thoroughly prior to applying the clay. Get the tip of a Q-Tip wet with rubbing alcohol and clean away any of the blackened oxidization on both sizes of the Bar Earring.

STEP 2:

Follow the manufacturer's instructions for the handling and mixing of the black Crystal Clay. Crystal Clay is epoxy clay that air-dries. It sets in 2 hours and continues to cure 14-16 hours. There is no baking required, no shrinkage.

STEP 3: (Images 5-6)

While wearing gloves, pinch off two equal sized balls of Part A and Part B and blend together fully until the clay is no longer marbled and uniform in color. You have approximately 90-120 minutes of working time before the clay starts to harden, so take your time. Once the clay is thoroughly mixed, remove your gloves to make it easier to work with the clay. For this tutorial, I mixed a small lentil sized ball of both Part A and B of clay. If the Crystal Clay is really sticky, let it sit for 15 minutes. This time will allow the freshly mixed clay to have time to set-up a bit, resulting in a much easier clay to manage.

STEP 4:

For each pair of earrings pinch off two pea size balls of clay and roll them into smooth balls using the palm of your hand and fingers. It will take time to get just the right amount of clay that you will need to cover the full surface of the Bar Earrings, so be patient if you have to remove excess clay or a need add more.

STEP 5: (Images 7-8)

Press the small smooth round ball of clay into a thin long thin patty with your fingertips. Create the patty to be a little longer in length than the bar earring.

STEP 6: (Image 9)

Place the thin long patty of clay onto the surface of the bar earring. Pat the clay down to adhere it to the front of the bar earring. Start pressing the clay down on one side of the earring and move across to the other side. This will help press out any air that might be trapped underneath the clay.

STEP 7: (Image 10)

If you have a lot of excess clay, you will want to trim away the excess before wrapping it around the bar earring. Lay the Crystal Clay covered bar earring face down onto a piece of plastic. The earring post should be sticking straight up. Use a knife to cut away the excess Crystal Clay. Allow for about 1/8" of clay on all four sides of the bar earring. (If you didn't let your sticky clay set from Step 3, it could potentially stick to the plastic. If so, let it set-up and then easily remove it from the plastic.)

STEP 8: (Images 11-12)

Now that the clay is adhered to the front of the bar earring and the excess clay is trimmed away you are ready to wrap the clay around to the backside. With the post facing up, use your fingertips to wrap the clay around the two long sides of the bar. The clay should either meet right in the middle or slightly shy of it. Press the clay together with your fingertips, creating a nice smooth jointed edge. The seam will also wrap around the post of the earring.

STEP 9:

If you have excess clay on the ends of the bar earring, pinch off the excess and pat the ends smooth.

Make These Earring Post Bar Earrings with Crystal Clay and Gilding Flakes

Designer: Becky Nunn



STEP 10:

Wipe your hands thoroughly with a wet-wipe. Wipe away any excess Crystal Clay from the post of the earring (if any is on it). The Crystal Clay will harden like cement, so it is best to make sure that any area that you don't want clay is clean.

STEP 11:

If you have fingerprints in your clay, or if you want the surface to be smoother than you have, wet your fingers slightly with water and rub the Crystal Clay. The water will help smooth the clay.

STEP 12:

Repeat Steps 5 through 11 to make the second earring in your pair. While the Crystal Clay is moist and uncured, lay the pieces onto a glossy surface, such as a piece of plastic. This will prevent the clay from sticking to the surface area.

STEP 13: (Images 13-14)

Place some Gilding Flakes onto your work surface. Wet the end of a toothpick and gently touch the Gilding Flake to pick it up. Place the flake(s) onto the wet Crystal Clay and slightly tack into place.

STEP 14: (Image 15)

Once the Gilding Flake is released from the toothpick, start to rub the flake into the Crystal Clay with your fingertips. The Gilding Flakes tear very easily, but don't worry. Just continue to adhere it onto the clay until you have your desired effect. Gently rub the Gilding Flakes into the Crystal Clay until it is smooth.

STEP 15: (Images 16-17)

Repeat for the other earring.

STEP 16:

Lay both earrings onto a piece of plastic to cure. For the first 90 to 120 minutes while the clay is setting-up, rotate the earring from side to side to avoid having a "flat surface" form on the clay. You could also create a flat surface where the posts of the earrings can poke through and be level (I used a piece of packaging to create a drying surface for other projects).

STEP 17: (Image 18)

Earrings will set up in 2 hours and will continue to cure for 14-16 hours after.

BONUS IDEA: (Images 19-25)

After I finished the above tutorial, I had some excess Crystal Clay. Instead of tossing out the excess, these are the earrings that I created with the extra bits.