



# NUNN DESIGN®

How to Make a Yes Bracelet



We look forward to bringing you exclusive innovations  
and distinctive products this year and beyond.

[www.nunndesign.com](http://www.nunndesign.com)

## How to Make a Yes Bracelet

Designer: Becky Nunn

### SUPPLIES NEEDED:

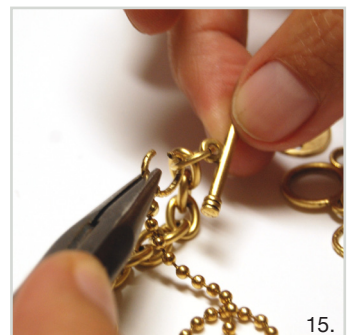
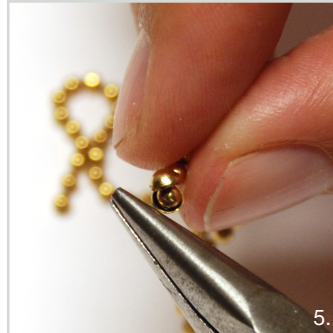
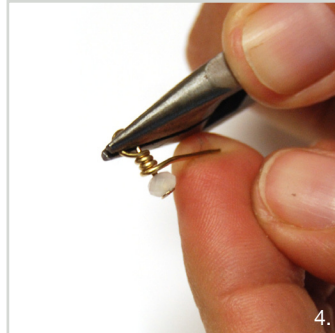
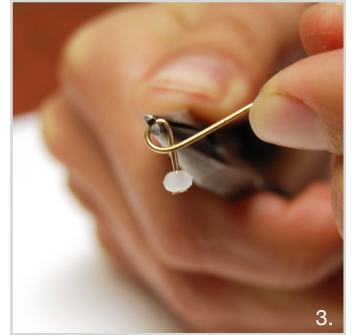
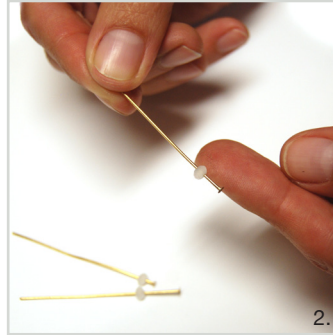
- 1 crh-gb - Charm Rustic Heart- Antique Gold
- 1 hftmcs-gb - Flat Tag Hamm Mini Circle Single- Antique Gold
- 2 jr6tc-gb - Jumping 6mm Textured Circle- Antique Gold
- 1 cbg-b - Charm Bracelet 7.75in- Antique Gold
- 2 bccc-gb - Ball Chain Crimp Connector- Antique Gold
- 1 jrlr-gb - Jumping Large Rope- Antique Gold
- 6 inches bc-gb - Ball Chain- Antique Gold
- 3 hpg-b - Headpins 2inch- Antique Gold
- 1 ftgth-gb - Flat Tag Grande Thin Horizontal- Antique Gold
- 4 jr9tc-gb Jumping 9mm Textured Circle- Antique Gold

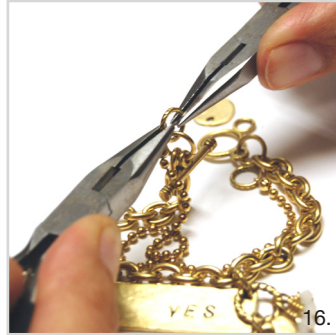
### TOOLS NEEDED:

- 2 Pair of 5 inch Basic Round Nose Pliers
- 1 Metal Stamping Font
- 1 lb Brass Metal Stamping Hammer

### OTHER:

- A Sharpie Marker
- Q-Tip
- Rubbing Alcohol
- 3 4 mm Faceted Beads of Choice





### STEP 1: STAMP YOUR TAGS (Image 1)

Using the metal stamp of your choice, stamp your impression on the Flat Tag Hamm Mini Circle Single- Antique Gold and on the Flat Tag Grande Thin Horizontal- Antique Gold. These tags are cast in lead free pewter and do not require a lot of force to make the impression. For more instruction on stamping these tags please see: [http://www.nunndesign.com/cheatsheets/BuyTry\\_But-a-Bing-Tutorial.pdf](http://www.nunndesign.com/cheatsheets/BuyTry_But-a-Bing-Tutorial.pdf)

### STEP 2: ASSEMBLE BEAD DANGLES (Images 2-4)

Thread one 4mm faceted bead onto one Headpins 2inch- Antique Gold. Using the round nose pliers create a loop approximately 1/4" from the top of the threaded bead. Wrap the excess wire around the pin 3 times and then snip any excess wire. Repeat this process with the other 2 beads and headpins.

### STEP 3: ASSEMBLE BALL CHAIN SECTION OF BRACELET (Images 5-8)

Take one Ball Chain Crimp Connector- Antique Gold place it around the last ball of the Ball Chain- Antique Gold. Using the round nose pliers gently pinch the crimp connector closed. For additional security you could place a dab of glue in the crimp connector. Repeat on the other end of the Ball Chain- Antique Gold. Select two of the Jumpring 9mm Textured Circle- Antique Gold. Open the jump ring using the round nose pliers – attach one jump ring to the crimp connector at the end of the ball chain then repeat for the other end.

### STEP 4: PREPARE THE HAMMERED HEART AND BEAD DANGLE (Images 9-10)

Open 1 Jumpring 6mm Textured Circle- Antique Gold and thread the Charm Rustic Heart- Antique Gold onto the jump ring. Close the jump ring. Then open the Jumpring Large Rope- Antique Gold using the pliers. Thread the 3 assembled bead dangles from Step 2 onto the Jumpring Large Rope- Antique Gold. Thread the Charm Rustic Heart- Antique Gold onto the Jumpring Large Rope- Antique Gold. Close the Jumpring Large Rope- Antique Gold.

### STEP 5: ATTACH THE ANTIQUE GOLD PLATED PEWTER HORIZONTAL HAMMERED RECTANGLE TAG (Images 11-14)

Lay the Charm Bracelet 7.75in- Antique Gold on your workspace and determine the position of the stamped Flat Tag Grande Thin Horizontal- Antique Gold. Using the round nose plier open the remaining 2 Jumpring 9mm Textured Circle- Antique Gold. Thread the stamped Flat Tag Grande Thin Horizontal- Antique Gold onto the jump rings and onto the links of the Charm Bracelet 7.75in- Antique Gold. On one of the Jumpring 9mm Textured Circle- Antique Gold also thread the Hammered Heart and Bead Dangle prepared in step 4. Close each Jumpring 9mm Textured Circle- Antique Gold using the round nose pliers.



## How to Make a Yes Bracelet

*Designer: Becky Nunn*

### **STEP 6: COMPLETE THE ASSEMBLY** (Images 15-18)

Use the assembled Ball Chain – Antique Gold with the jump rings prepared in step 3. Attach one end to the ring between the toggle bar and bracelet, close the jump ring using the pliers. Attach the other end of the assembled Ball Chain – Antique Gold to the ring between the toggle ring and bracelet. Close the jump ring using the pliers. Last but not least, open the 1 remaining Jump ring 6mm Textured Circle- Antique Gold and thread the stamped Flat Tag Hamm Mini Circle Single- Antique Gold onto the bracelet toggle ring. Close the jump ring.

### **STEP 7: WEAR YOUR NEW BRACELET!**



- Take a moment to cruise through our blog! --> [www.nunndesign.com/blog](http://www.nunndesign.com/blog)
- Follow Nunn Design on Pinterest! --> [www.pinterest.com/nunndesign](http://www.pinterest.com/nunndesign)
- Please Like us on Facebook. --> [www.facebook.com/nunndesign](http://www.facebook.com/nunndesign)