



NUNN DESIGN®

How to Instructions For Epoxy Clay Starbright Wrap Bracelet



We look forward to bringing you exclusive innovations
and distinctive products this year and beyond.

www.nunndesign.com

NUNN DESIGN SUPPLIES:

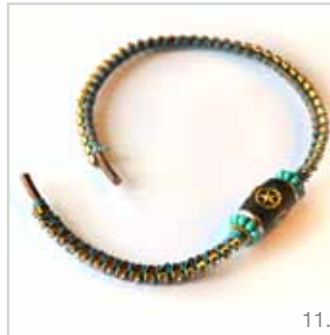
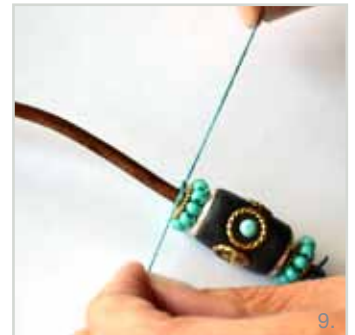
- 1 Channel Bead Large – Antique Silver (cbl-sb)
- 2 Channel Bead Small – Antique Gold (cbs-gb)
- 4 Jumping Large Rope – Antique Gold (jrlr-gb)
- 2 Brass Stamping Mini Star – Brass (mems-bb)
- 4 Crystal Chatons – Turquoise Chaton (cha-tur)
- 16 inches Rhinestone Chain 18ss – Antique Gold (rc18-cb)
- Hook & Eye Clasp Set – Antique Gold (hec-gb)

OTHER SUPPLIES:

- 16 inches 4mm Brown Leather cording
- 8 Inches Brass 20 gauge wire
- 20 Teal Glass Size 6 seed beads
- 30 inches 4 ply Waxed linen cording

TOOLS NEEDED:

- Round Nose Pliers
- Chain Nose Pliers
- Flush Cutters
- Scissors



TO ASSEMBLE THE PENDANT

STEP 1: (Images 1 & 2)

Mix Crystal Clay as per instructions. Cover the large spool bead with a generous layer of clay.

STEP 2: (Image 4)

Gently press 4 closed rope jump rings into the clay on all four sides. Press 2 star components into the clay in the center of 2 of the jump rings. Press 2 teal chatons into the clay in the center of the other 2 jump rings. Set aside to dry.

TO ASSEMBLE THE BRACELET

STEP 3: (Images 5 & 6)

String 10 glass seed beads onto a 6 inch section of waxed linen cording. Wrap the beaded section around 1 small spool bead. Tie a double overhand knot and trim excess cording. Repeat step 3 for second spool bead.

STEP 4: (Image 7)

Form a stop on the leather cording using waxed linen cording. Take a 9 inch section of cording, tie an overhand knot around the cording and leave a 1-2 inch tail. Place this cording approximately 4 inches from one end. Wrap the cording around the leather tightly, about 9-10 times, leaving a tail. Tie the two tails into a double overhand knot. Trim excess cording with flush cutters or scissors.

STEP 5: (Image 8 & 9)

String one seed beaded spool bead, the focal bead (once clay has cured) and 1 seed beaded spool bead. Repeat step 4, tightening up the beads together on the leather. The wrapped linen cording will keep everything in place on the leather cording.

STEP 6: (Image 10)

Cut the cup chain into two sections. One should be measured against the leather so that the cup chain is about a half an inch from the end of the leather. Using the linen cording, tie an overhand knot around the first rhinestone on the chain, and around the leather cording. Hold the tail of the cording against the leather, and start wrapping the cording around the leather, linen cord tail, and cup chain. Wrap the cording twice between each rhinestone chain.

STEP 7: (Image 11)

At the end, tie a double overhand knot around the last rhinestone and trim the excess cording.

STEP 8: (Images 10 & 11)

Repeat step 6-7 with the other half of the cup chain.

STEP 9: (Images 12-14)

Cut the 20 gauge wire in half. Using one piece, bend one end of the wire around round nose pliers forming a U at about 1 inch from the end. Holding the u at the end of the leather cording tightly with your right hand, start wrapping the longer wire tail around the shorter tail and around the leather cord, about 6 times. Trim the short tail of wire with flush cutters. Tuck the wrapped end in with chain nose pliers. Repeat this step for the other wire at the other end of the bracelet.

STEP 10: (Image 15)

Open the loop on the hook clasp and attach it to the wire on one end. Open the eye loop and attach it to the wire on the other end. Bracelet will wrap twice around the wrist.

DOUBLE OVERHAND KNOT:

http://en.wikipedia.org/wiki/Double_overhand_knot