



How to Instructions For Black Chaton Gold Bezel Bracelet



We look forward to bringing you exclusive innovations
and distinctive products this year and beyond.

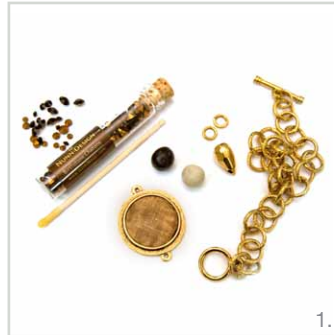
www.nunndesign.com

NUNN DESIGN SUPPLIES:

- Crystal Clay-Black (cryclay-black)
- Cha-blk Chaton Black (cha-blk)
- 1 Raised Pendant Small Circle Double Loop - Antique Gold Plated (rpsc-gb)
- 2 Jump Ring 6mm Textured Circle - Antique Gold Plated (jr6tc-gb)
- 1 Metal Bead Faceted Drop - Antique Gold Plated (mbfd-gb)
- 1 Charm Bracelet Looped Chain - Antique Gold Plated (cbloop-gb)

TOOLS NEEDED:

- Beeswax Toothpick or Magic Pick Lite
- 2 pairs of needle nose pliers
- Wet wipes
- Toothpick or a headpin



1.



2.



3.



4.



5.



6.



7.



8.



9.



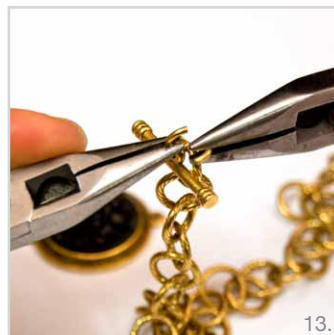
10.



11.



12.



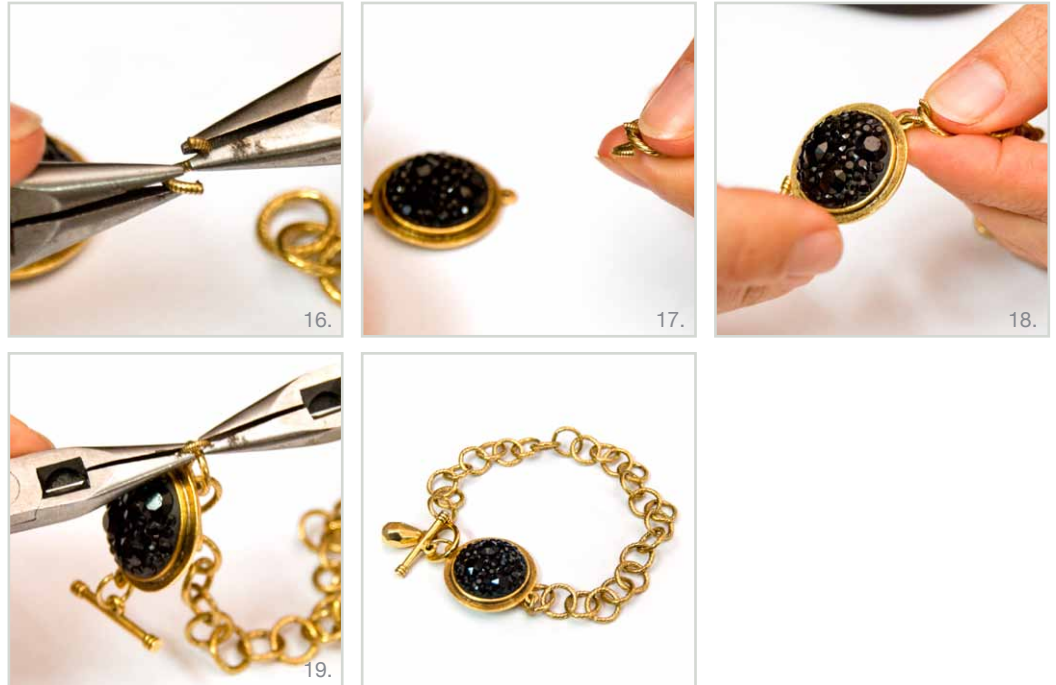
13.



14.



15.



TO ASSEMBLE THE BEZEL

STEP 1: (Images 2 & 3)

Pinch off two equal lentil-sized balls, one of Part A (the color) and another of Part B (the hardener) of the Crystal Clay. Knead the two equal-sized balls fully together until the clay is a consistent color and not marbled.

STEP 2: (Image 4)

Roll the Crystal Clay into a ball and press it into the base of Raised Pendant Small Circle Double Loop - Antique Gold Plated. Pat the clay gently until it is flat and fully flush to the edges. If you have too much Crystal Clay, you can pinch off the excess and keep patting it down to make the surface smooth. Make sure to use your wet wipe and wipe away any excess Crystal Clay that could be on the sides of the metal or on your fingers. The Crystal Clay will dry rock hard and is super hard to remove, so get in the practice of always keeping your work surface clean and tidy.

STEP 3: (Images 5-7)

Using a beeswax toothpick or a Magic Pick Lite, pick-up the individual Black Chatons and gently press each into the Crystal Clay. Continue to press Chatons in until complete. You have approximately 2 hours to work with the Crystal Clay, so take your time and enjoy.

NOTE: To create the stair step look of layering the Chatons, pinch off a small ball of clay and press it gently into the gaps between the various sizes of the Chatons using a headpin. This allows for a bit of clay to be built up so the additional Chatons have plenty of clay to be pressed into. Wipe away the excess Crystal Clay if it spreads onto the surrounding Chatons.

STEP 4: (Image 8-9)

Use your fingers to gently press the Chatons into the clay, making sure that all of the Chaton points are secure and embedded fully into the clay. Wipe away any excess Crystal Clay. It will dry rock hard and is super hard to remove. The Crystal Clay will harden within 2 hours and fully cure within 24.

STEP 5:

Allow pendant to cure at least 6-8 hours.

TO ASSEMBLE BRACELET**STEP 1:** (Images 10-12)

Using two pairs of needle nose pliers, open a 6mm Textured Jump Ring. Thread through the Metal Bead Faceted Drop – Antique Gold Plated and attach it onto the Toggle Ring of the Looped Chain Charm Bracelet. Close the jump ring.

STEP 2: (Images 13-15)

Using two pairs of needle nose pliers, open the large jump ring attached to the Toggle Bar at the opposite end of the Large Loop Cable Chain Gold. Attach the opened large jump ring with toggle bar to the assembled and cured Raised Pendant. Close large jump ring.

STEP 3: (Images 16-19)

Using two pairs of needle nose pliers, open the remaining 6mm Textured Jump Ring and attach it to the empty loop of the Raised Pendant. Also thread the 6mm Textured Jump Ring through the open end of the Looped Charm Bracelet. NOTE: You may need to remove a couple links of the Looped Charm Bracelet if it is too large.

There you have it. Aren't you sporting a fashionable bling!

We have a lot to offer and would love for you to stay connected!

- Take a moment to cruise through our blog! --> www.nunndesign.com/blog
- Follow Nunn Design on Pinterest! --> www.pinterest.com/nunndesign
- Please Like us on Facebook. --> www.facebook.com/nunndesign