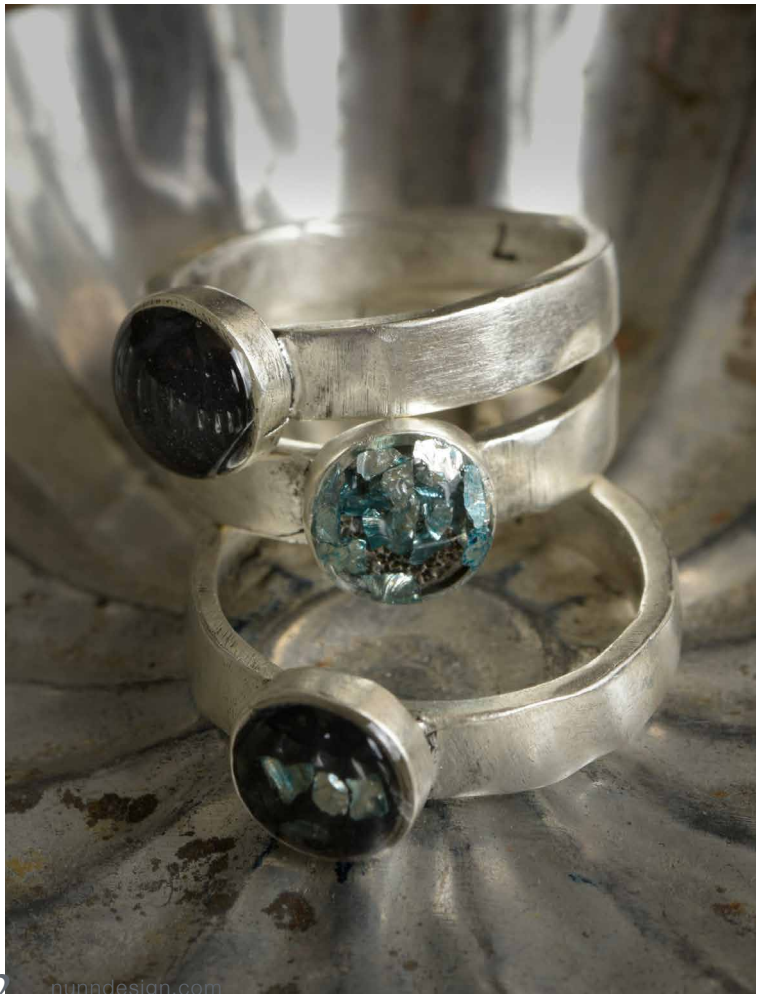




**NUNN DESIGN**[®]

2016 Summer Catalogue

www.nunndesign.com





hftlnh-cb • hftlnh-gb • hftlnh-sb



ftsrh-cb • ftsrh-gb • ftsrh-sb

**HAMMERED FLAT TAG
LONG NARROW HORIZONTAL**

pack of 10
OD: 44.6 x 7.4 x 1.4mm
Hole Size: 2mm

**FLAT TAG
SMALL RECTANGLE HORIZONTAL**

pack of 10
OD: 31.7 x 7.8 x 1.3mm
Hole Size: 2mm



cisc-cb • cisc-gb • cisc-sb • cisc-ssb

CHARM ITSY SPIRITUAL CROSS

pack of 10
OD: 12.7 x 9.1 x 2.1mm
Hole Size: 2mm



cissd-cb • cissd-gb • cissd-sb • cissd-ssb

CHARM ITSY SPIRITUAL STAR OF DAVID

pack of 10
OD: 12.7 x 9.1 x 2.1mm
Hole Size: 2mm



cisyy-cb • cisyy-gb • cisyy-sb • cisyy-ssb

CHARM ITSY SPIRITUAL YIN YANG

pack of 10
OD: 12.7 x 9.1 x 2.1mm
Hole Size: 2mm



rhic6-cb • rhic6-gb • rhic6-sb • rhic6-ssb

RING HAMMERED ITSY CIRCLE SIZE 6

pack of 10
OD: Band width 4mm, Bezel 8 x 8 x 2mm
ID: Ring size 6, Bezel 6.5 x 6.5 x 1.5mm



rhic7-cb • rhic7-gb • rhic7-sb • rhic7-ssb

RING HAMMERED ITSY CIRCLE SIZE 7

pack of 10
OD: Band width 4mm, Bezel 8 x 8 x 2mm
ID: Ring size 7, Bezel 6.5 x 6.5 x 1.5mm



rhic8-cb • rhic8-gb • rhic8-sb • rhic8-ssb

RING HAMMERED ITSY CIRCLE SIZE 8

pack of 10
OD: Band width 4mm, Bezel 8 x 8 x 2mm
ID: Ring size 8, Bezel 6.5 x 6.5 x 1.5mm





ofirs-cb • ofirs-gb • ofirs-sb • ofirs-ssb

**OPEN FRAME ITSY RECTANGLE
SINGLE LOOP**

pack of 10
 OD: 18.4 x 6.4 x 2.8mm
 ID: 10.6 x 4.3 x 2.8mm
 Hole Size: 3.2mm



ofrs-cb • ofrs-gb • ofrs-sb • ofrs-ssb

**OPEN FRAME SMALL RECTANGLE
SINGLE LOOP**

pack of 10
 OD: 24.6 x 9.5 x 2.9mm
 ID: 17 x 7.5 x 2.9mm
 Hole Size: 3.2mm



oflrs-cb • oflrs-gb • oflrs-sb • oflrs-ssb

**OPEN FRAME LARGE RECTANGLE
SINGLE LOOP**

pack of 10
 OD: 31 x 12.8 x 2.9mm
 ID: 22.9 x 10.1 x 2.9mm
 Hole Size: 3.2mm



obcdscs-cb • obcdscs-gb • obcdscs-sb

**OPEN BEZEL CHANNEL DEEP
SMALL CIRCLE SINGLE**

pack of 5
 OD: 22.5 x 17 x 9.4mm
 ID: Bezel 14.8 x 14.8 x 9.4mm,
 Channel 7.7mm width x 1mm depth
 Hole Size: 3mm



obcdlcs-cb • obcdlcs-gb • obcdlcs-sb

**OPEN BEZEL CHANNEL DEEP
LARGE CIRCLE SINGLE**

pack of 5
 OD: 28.8 x 24 x 9.7mm
 ID: Bezel 21.2 x 21.2 x 9.7mm,
 Channel 7.7mm width x 1mm depth
 Hole Size: 3mm





kwlwwe-cp

KIT LEATHER FRINGE EARRINGS

Kit Supplies:

- 38" Deerskin Lace 5mm-Chocolate
- 4' 26 Gauge Wire-Copper
- 2 Ear Wires-Copper
- 12 4mm Pearl Beads
- 2 9mm Textured Jumping Circle-Cop
- 2 Grande Rope Jump Ring-Copper

Additional Supplies Needed:

- 1 pair of Flush Cutters
- 2 pair of Needle Nose Pliers
- 1 Ruler
- 1 Pair of Scissors



kwcwcb-bb

KIT CRYSTAL WRAP CUFF BRACELETS

Kit Supplies for 3 Cuff Bracelets

- 3 Hammered Cuff Bracelets
- 9' of 24-gauge gold wire
- 4.5" Rhinestone Chain 14pp Crystal
- 4.5" Rhinestone Chain 14pp Coral
- 4.5" Rhinestone Chain 14pp Turquoise

Additional Supplies Needed:

- 1 pair Shear Flush Cutters
- 1 pair Needle Nose Pliers



kwcwew-bb

KIT CRYSTAL WRAP EARRINGS

Kit Supplies for 3 Pairs of Earrings!

- 6 Elongated Drop Ear Wires Brass
- 6' of 24-gauge Gold wire
- 6" of Rhinestone Chain 14pp Crystal
- 6" of Rhinestone Chain 14pp Coral
- 6" of Rhinestone Chain 14pp Turquoise

Additional Supplies Needed:

- 1 pair of Shear Flush Cutters
- 1 pair of Needle Nose Pliers



kwblc-sb

KIT BRACELET LUCKY CHARMS

Kit Includes:

- 7 pieces (cut to 5.5") of ballchain
- 2 Ribbon Ends Small Round
- 6 Charms: Mini Star, Mini Horseshoe, Mini Arrow, Primitive Heart, Leaf & Wishbone
- 11 Jumprings 9mm Textured Oval (2 extra)
- Toggle Bar & Ring Contemporary

Additional Supplies Needed:

- 2 Pairs of needle nose pliers
- Multi-purpose adhesive (such as Bond 527 Cement or E6000)
- Toothpick
- Wet-wipes
- Small Cello bag



kwnlc-sb

KIT NECKLACE LUCKY CHARMS

Kit Includes:

- 24" Ball Chain
- 2 Ball Chain Crimp Connectors
- 6 Charms: Mini Star, Mini Horseshoe, Mini Arrow, Primitive Heart, Leaf & Wishbone
- 9 Jumprings 9mm Textured Oval
- Toggle Ring Contemporary
- Toggle Bar & Ring Small Hammered

Additional Supplies Needed:

- 2 Pairs of needle nose pliers
- Multi-purpose adhesive (such as Bond 527 Cement or E6000)
- Toothpick
- Wet-wipes
- Small Cello bag



kwelc-sb

KIT EARRINGS LUCKY CHARMS

Kit Includes:

- 2 Earwires
- 2 Toggle Ring Contemporary
- 6 Charms: Mini Star, Mini Horseshoe, Mini Arrow, Primitive Heart, Leaf & Wishbone
- 12 Jumprings 9mm Textured Oval

Additional Supplies Needed:

- 2 Pairs of needle nose pliers



kwbbb-sb

KIT BRACELET BOHO BANGLE

Kit Includes:

- 2.5' Deerskin Lace 3mm Saddle
- 9" Deerskin Lace 5mm Saddle (not shown)
- 2 Bangle Bracelets Channel Narrow
- 1 Bangle Bracelet Flat Small
- 1' 28 Gauge Silver Wire (not shown)
- 2 Metal Beads Faceted Round 4mm
- 4 Jumping 6mm Textured Circle
- 1 Metal Bead Faceted Teardrop
- 1 Headpin (not shown)
- 1 Charm Tree of Life
- 1 Charm Small Elephant
- 2' 20 Gauge Silver Wire (not shown)
- 1 Beadcap 9mm Sea Hive
- 1 Metal Bead Faceted
- 1 Beadcap 6mm Petal

Additional Supplies Needed:

- 1 pair of Shear Flush Cutters
- 2 pair of Needle Nose Pliers
- 1 Ruler, 1 Pair of Scissors
- Multi Purpose Adhesive (such as Bond 527 Cement or E6000)
- Toothpick, Wet-wipes
- Small Cello bag (or plastic wrap)



kwibbn-gp

KIT ITSY BOTTLE BOHO NECKLACE

Kit Supplies:

- 1' Deerskin Lace 5mm Chocolate
- 1g Crystal Clay Black
- 16" Faceted Bead Chain
- 2 Ball Chain Crimp Connectors
- 1 Lobster Clasp 15mm
- 6 Jumping 6mm Textured Circle
- 1 Jumping Grande Rope
- 4 Jumping 9mm Textured Circle
- 1 Charm Tree of Life
- 1 Charm Buddha
- 1 Charm Itsy Circle Heart
- 1' 26 gauge gold wire
- Itsy Bottle & Top Channel
- 1 Hammered Flat Tag Long Narrow Single Hole
- 2 latex gloves (not shown)

Additional Supplies Needed:

- 1 pair of Shear Flush Cutters
- 2 pair of Needle Nose Pliers